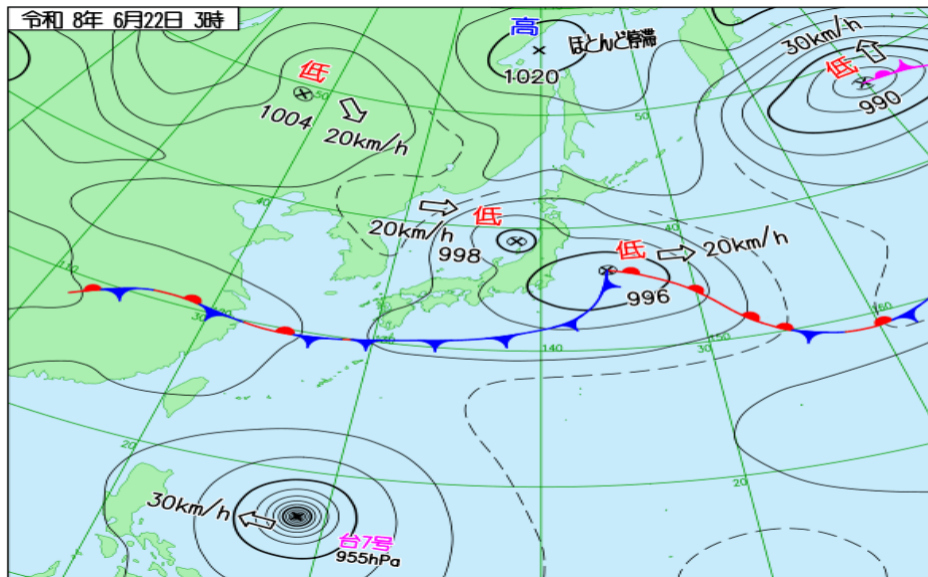
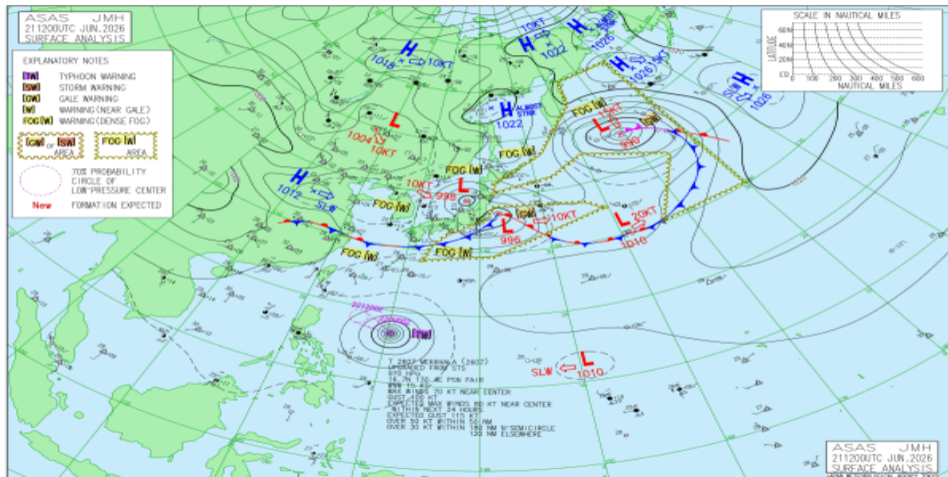


# JMA 日本域実況天気図 06/21 18Z

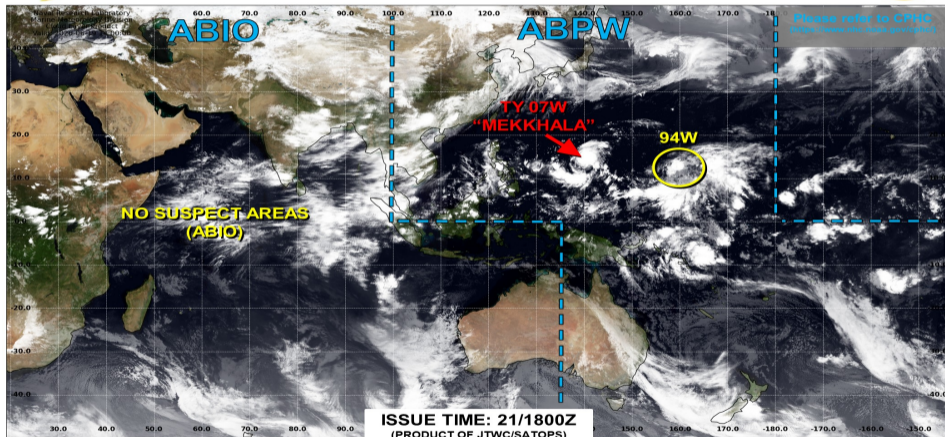


# JMA アジア太平洋域実況天気図 06/21 12Z





## JOINT TYPHOON WARNING CENTER



LOW

TC development unlikely  
within 24 hours

MEDIUM

TC development likely, but  
expected to occur beyond  
24 hours

HIGH

TC development likely within  
24 hours  
(Reference TCFA)

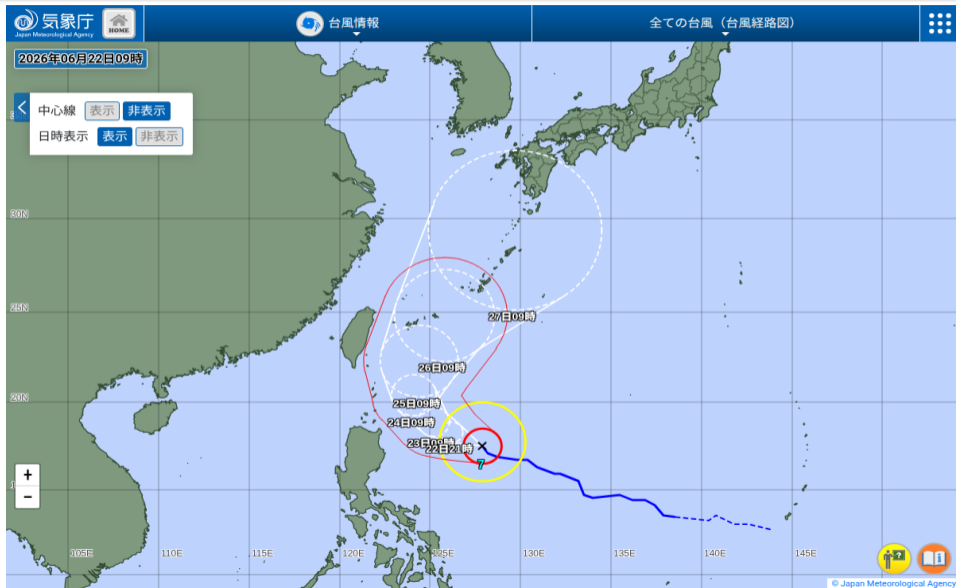
SUB  
TROPICAL

Monitoring for  
potential transition to TC.  
Invest label color denotes  
tropical transition probability

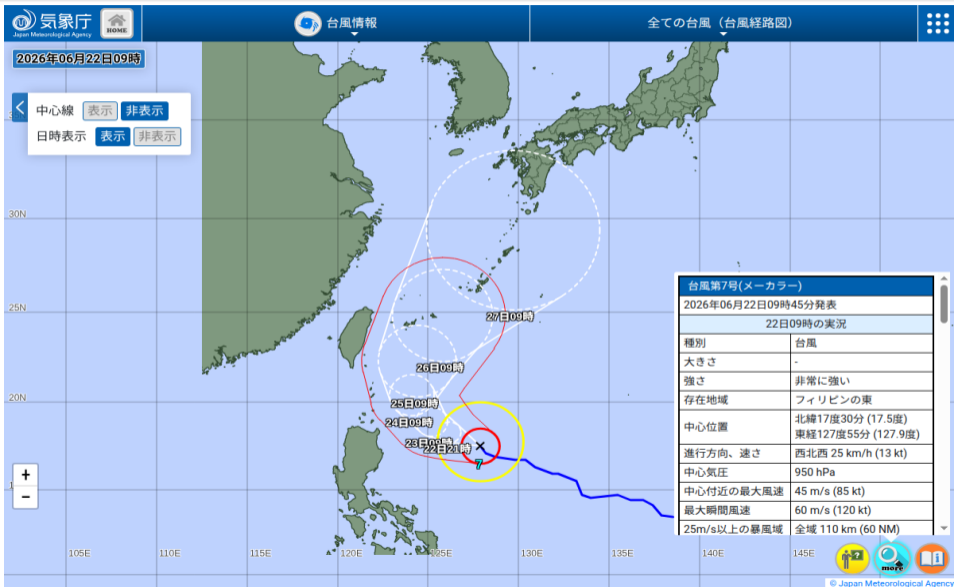


Tropical Cyclone  
(Reference Warning)

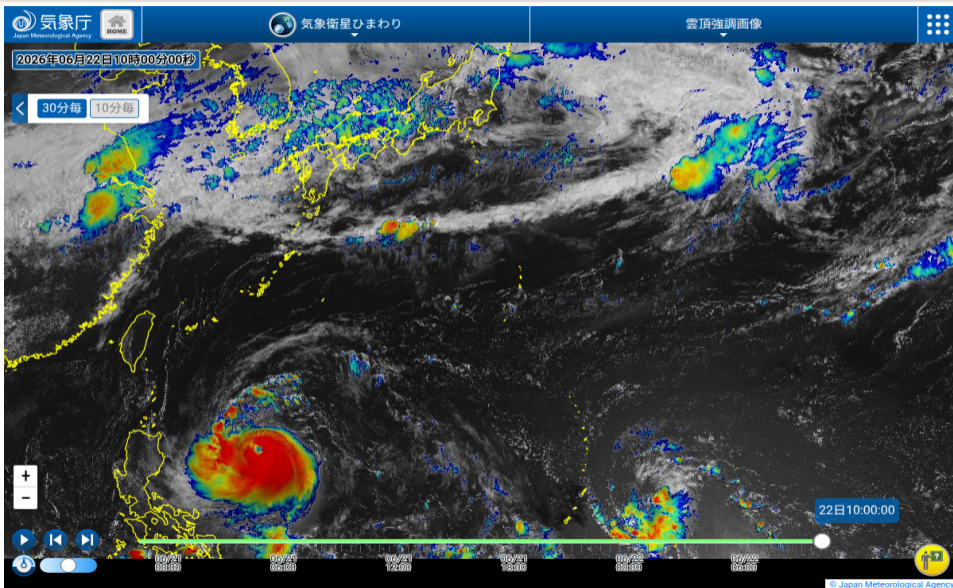
# JMA 台風実況



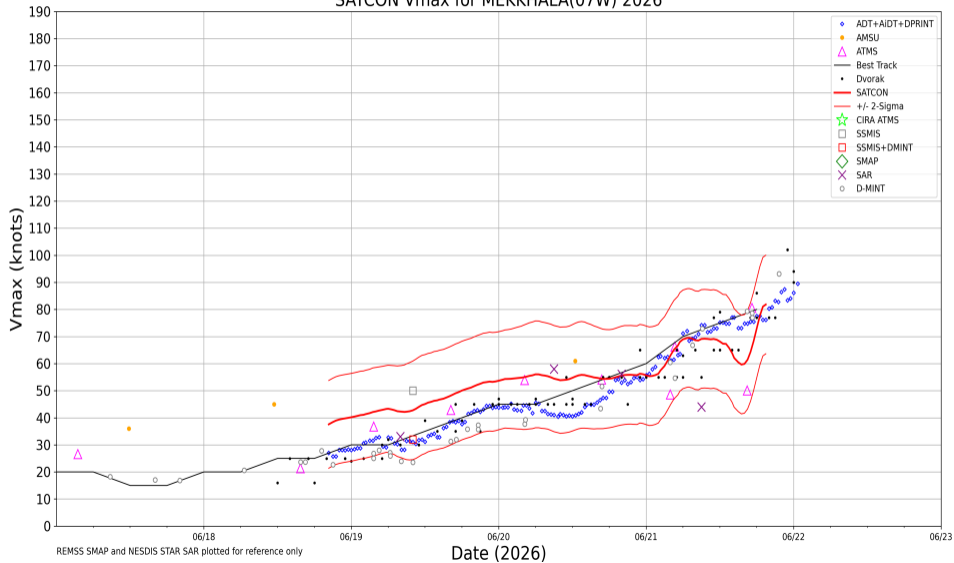
# JMA 台風実況



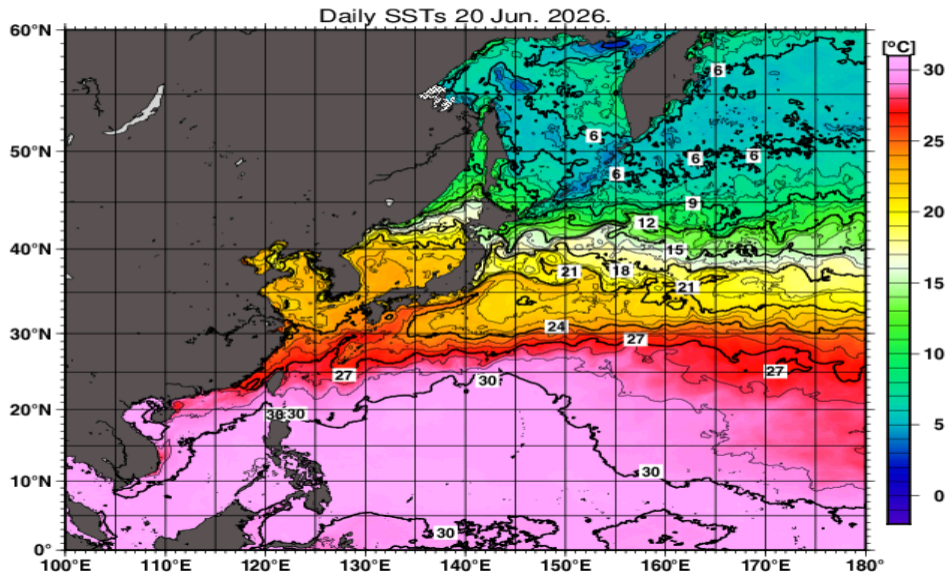
# ひまわり雲頂強調



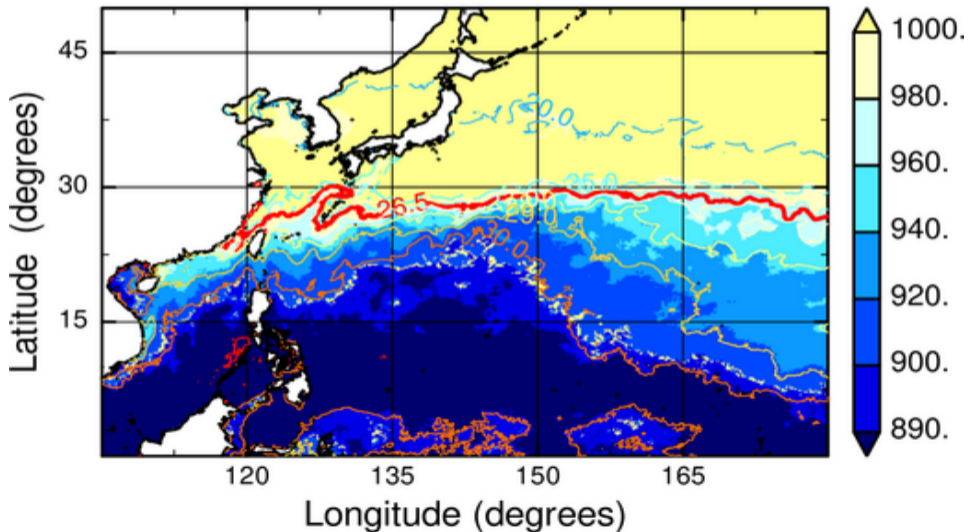
## SATCON Vmax for MEKKHALA(07W) 2026



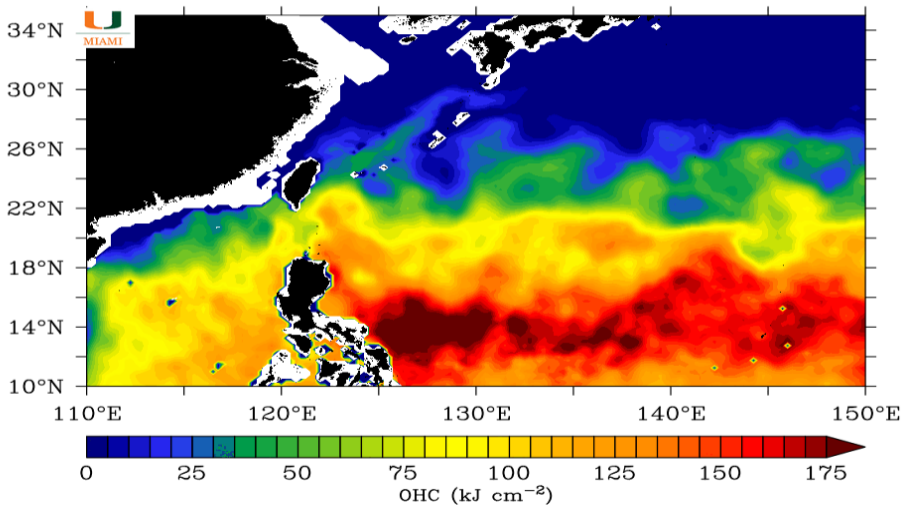
# JMA 海面水温解析



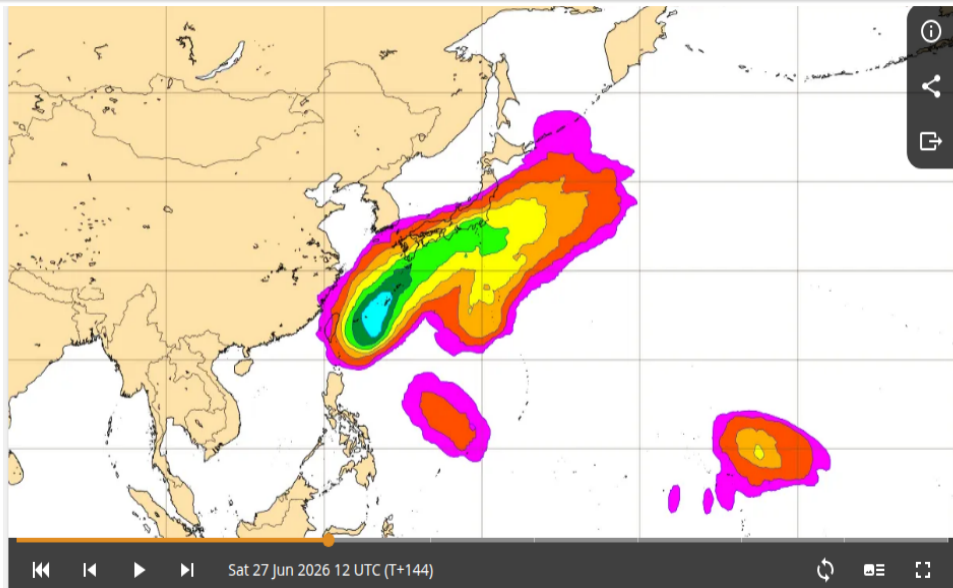
MPI<sub>BE</sub>, JMAGSM+HIMSST (mb) (00:00:00Z20Jun2026)



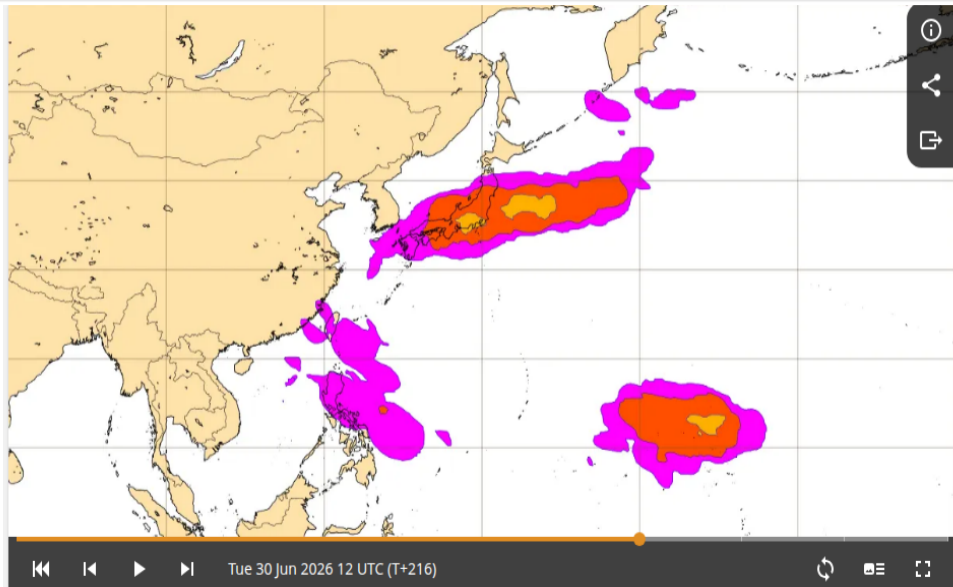
Ocean Heat Content: 06/21/2026



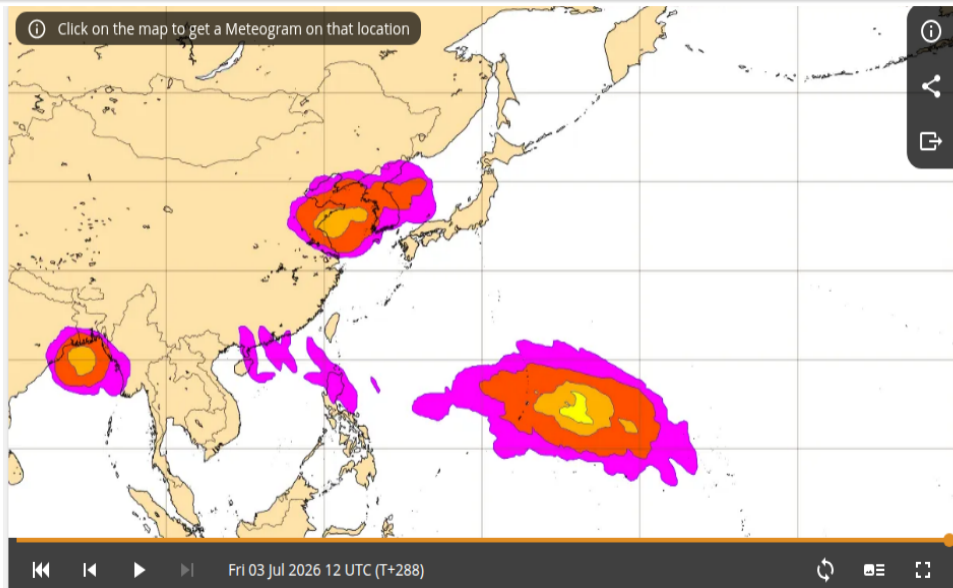
# ECMWF TC genesis 06/27 12Z (6 日先) 予報



# ECMWF TC genesis 06/30 12Z (9 日先) 予報



# ECMWF TC genesis 07/03 12Z (12 日先) 予報

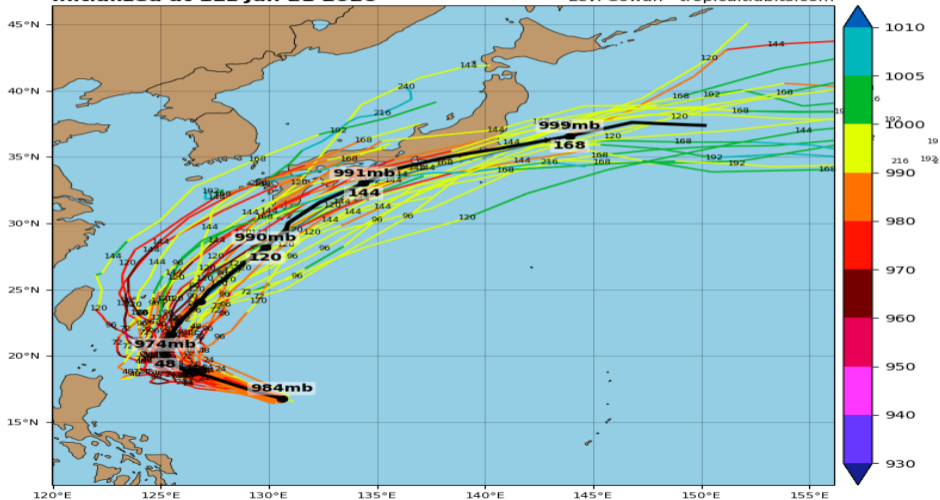


# 07W GEFS (06/21 12Z 初期値)

## 07W MEKKHALA - GEFS Tracks and Min. MSLP (hPa)

Initialized at 12z Jun 21 2026

Levi Cowan - tropicaltidbits.com

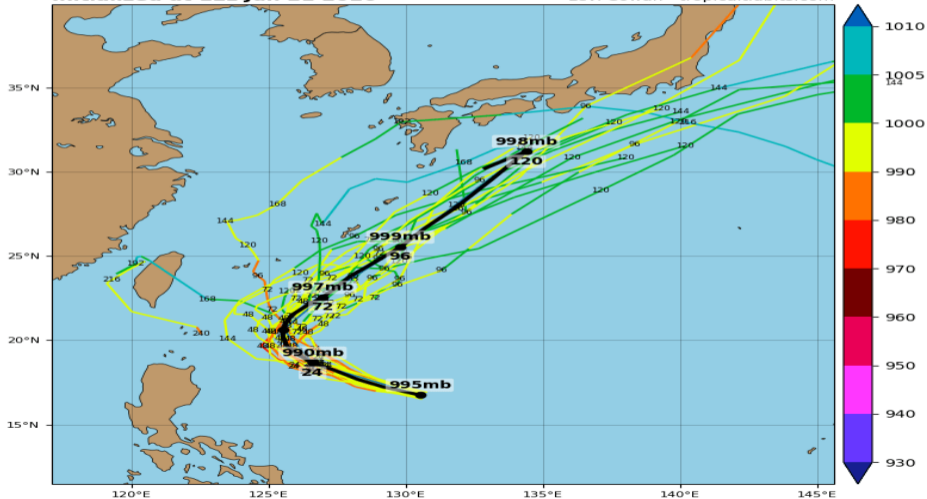


# 07W GEPS (06/21 12Z 初期値)

## 07W MEKKHALA - GEPS Tracks and Min. MSLP (hPa)<sup>120</sup>

Initialized at 12z Jun 21 2026

Levi Cowan - tropicaltidbits.com

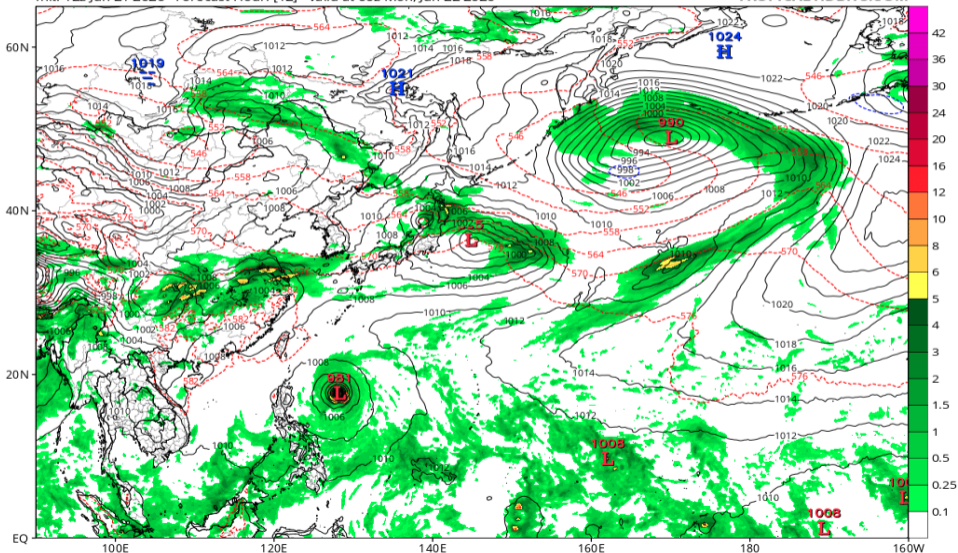


# 地上気圧配置 (GFS 06/22 00Z 予報)

GFS 6-hour Averaged Precip Rate (mm/hr), MSLP (hPa) & 1000-500mb Thickness (dam)

Init: 12z Jun 21 2026 Forecast Hour: [12] valid at 00z Mon, Jun 22 2026

TROPICALTIDBITS.COM

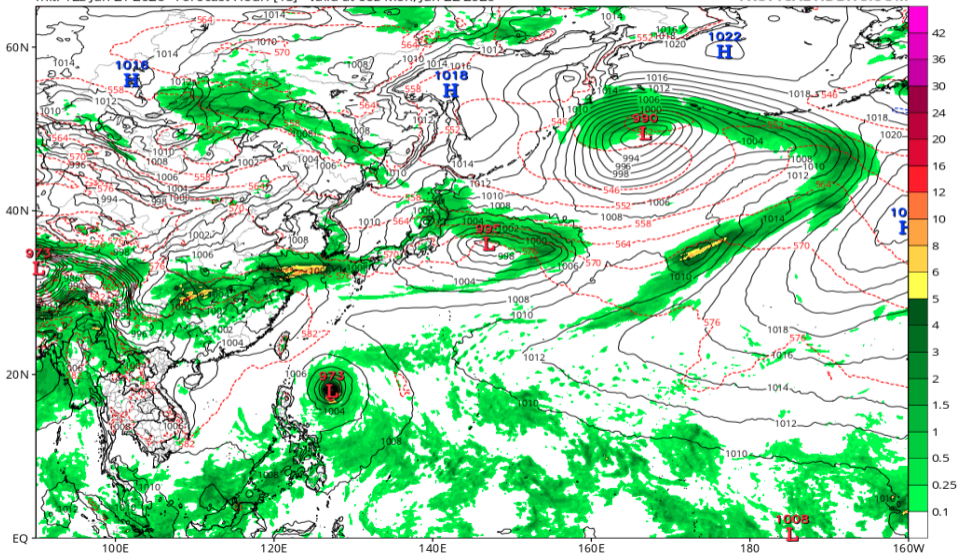


# 地上気圧配置 (GFS 06/22 06Z 予報)

GFS 6-hour Averaged Precip Rate (mm/hr), MSLP (hPa) & 1000-500mb Thickness (dam)

Init: 12z Jun 21 2026 Forecast Hour: [18] valid at 06z Mon, Jun 22 2026

TROPICALTIDBITS.COM

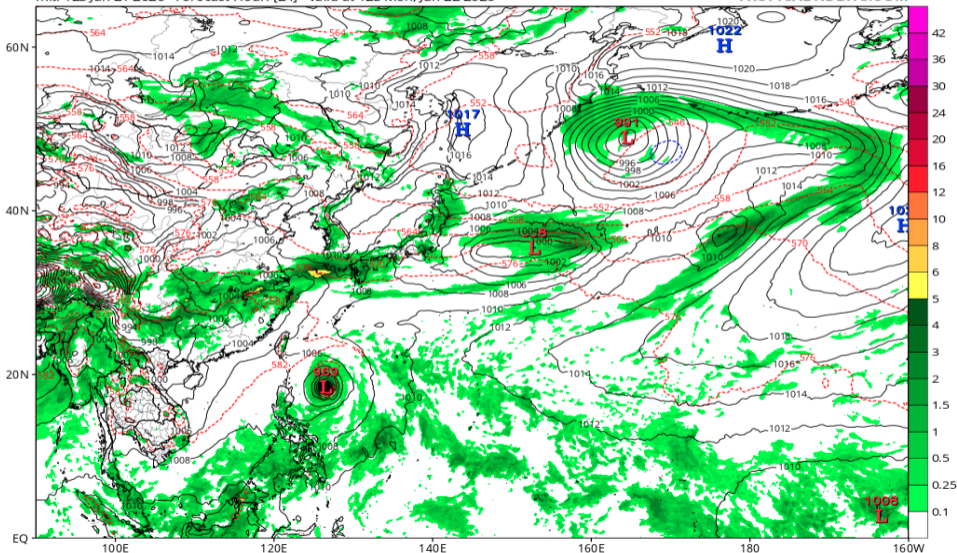


# 地上気圧配置 (GFS 06/22 12Z 予報)

GFS 6-hour Averaged Precip Rate (mm/hr), MSLP (hPa) & 1000-500mb Thickness (dam)

Init: 12z Jun 21 2026 Forecast Hour: [24] valid at 12z Mon, Jun 22 2026

TROPICALTIDBITS.COM

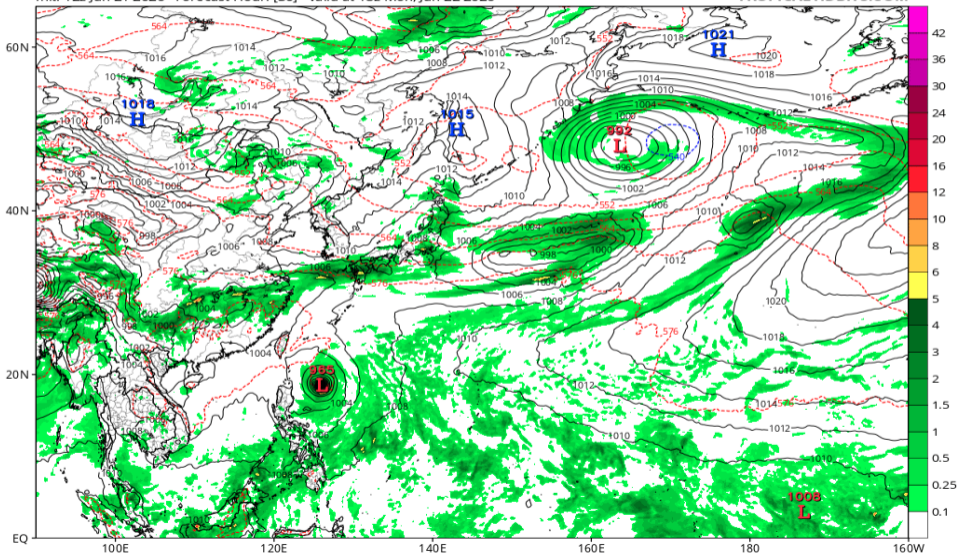


# 地上気圧配置 (GFS 06/22 18Z 予報)

GFS 6-hour Averaged Precip Rate (mm/hr), MSLP (hPa) & 1000-500mb Thickness (dam)

Init: 12z Jun 21 2026 Forecast Hour: [30] valid at 18z Mon, Jun 22 2026

TROPICALTIDBITS.COM

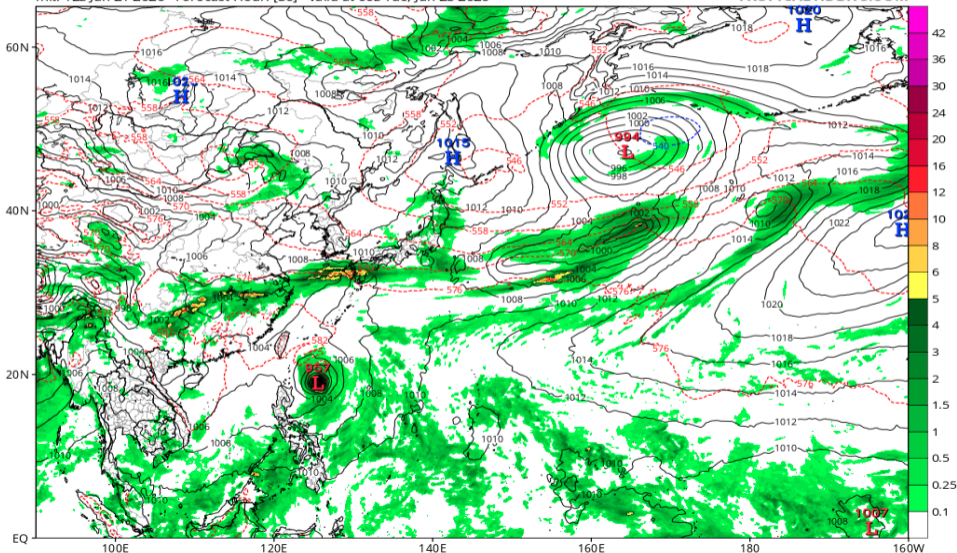


# 地上気圧配置 (GFS 06/23 00Z 予報)

GFS 6-hour Averaged Precip Rate (mm/hr), MSLP (hPa) & 1000-500mb Thickness (dam)

Init: 12z Jun 21 2026 Forecast Hour: [36] valid at 00z Tue, Jun 23 2026

TROPICALTIDBITS.COM

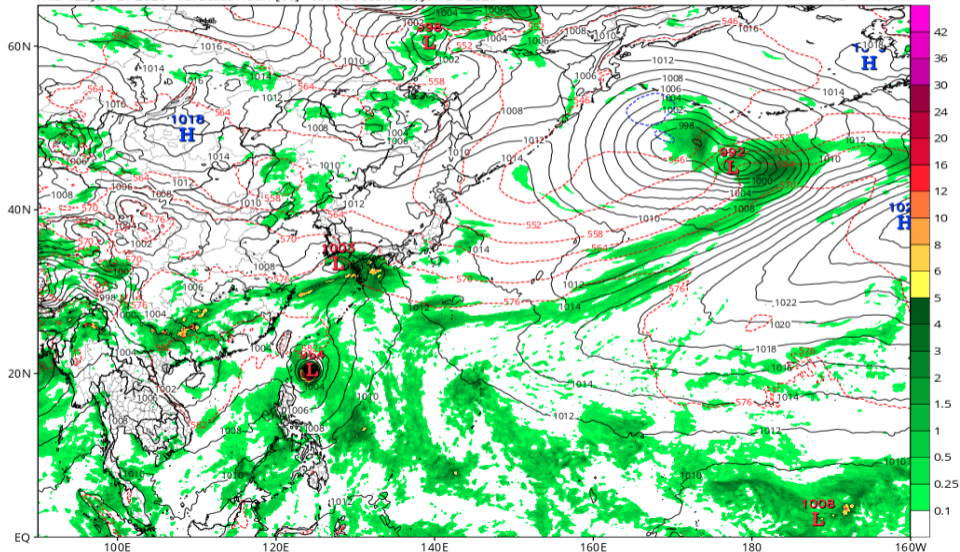


# 地上気圧配置 (GFS 06/24 00Z 予報)

GFS 6-hour Averaged Precip Rate (mm/hr), MSLP (hPa) & 1000-500mb Thickness (dam)

Init: 12z Jun 21 2026 Forecast Hour: [60] valid at 00z Wed, Jun 24 2026

TROPICALTIDBITS.COM

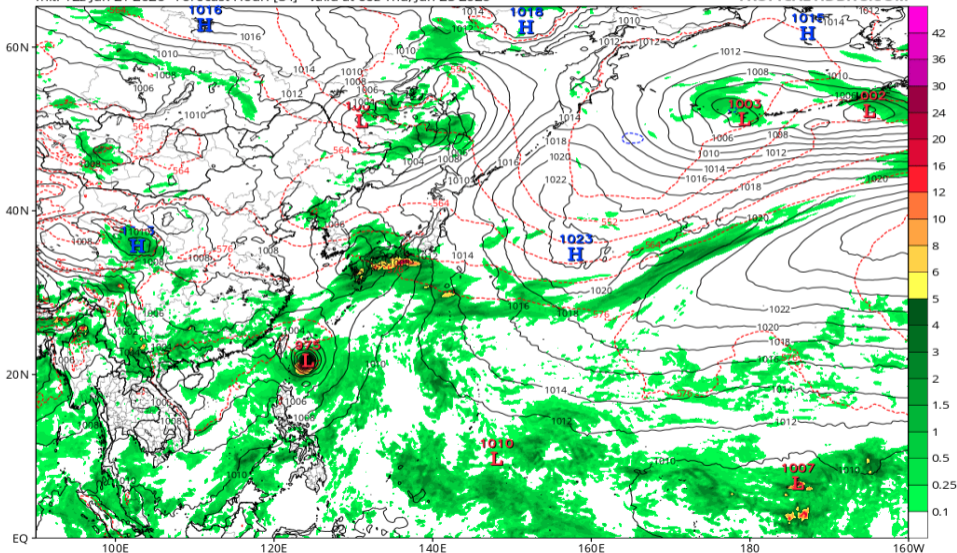


# 地上気圧配置 (GFS 06/25 00Z 予報)

GFS 6-hour Averaged Precip Rate (mm/hr), MSLP (hPa) & 1000-500mb Thickness (dam)

Init: 12z Jun 21 2026 Forecast Hour: [84] valid at 00z Thu, Jun 25 2026

TROPICALTIDBITS.COM

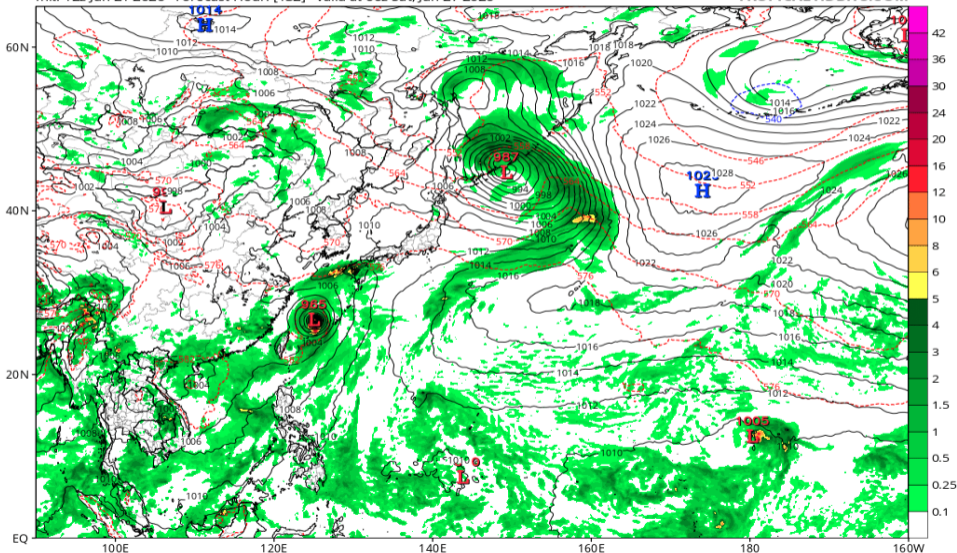


# 地上気圧配置 (GFS 06/27 00Z 予報)

GFS 6-hour Averaged Precip Rate (mm/hr), MSLP (hPa) & 1000-500mb Thickness (dam)

Init: 12z Jun 21 2026 Forecast Hour: [132] valid at 00z Sat, Jun 27 2026

TROPICALTIDBITS.COM

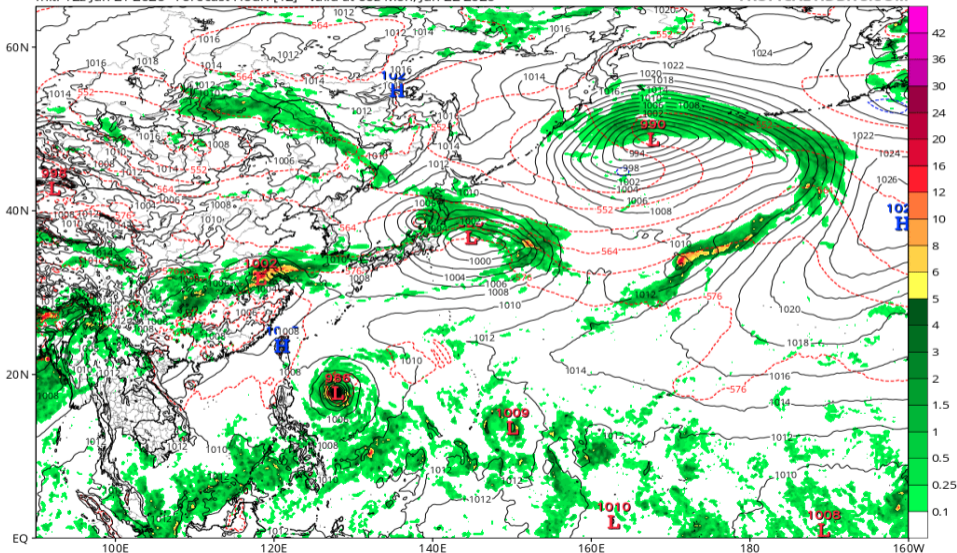


# 地上気圧配置 (ECMWF 06/22 00Z 予報)

ECMWF Instantaneous Precip Rate (mm/hr), MSLP (hPa) & 1000-500mb Thickness (dam)

Init: 12z Jun 21 2026 Forecast Hour: [12] valid at 00z Mon, Jun 22 2026

TROPICALTIDBITS.COM

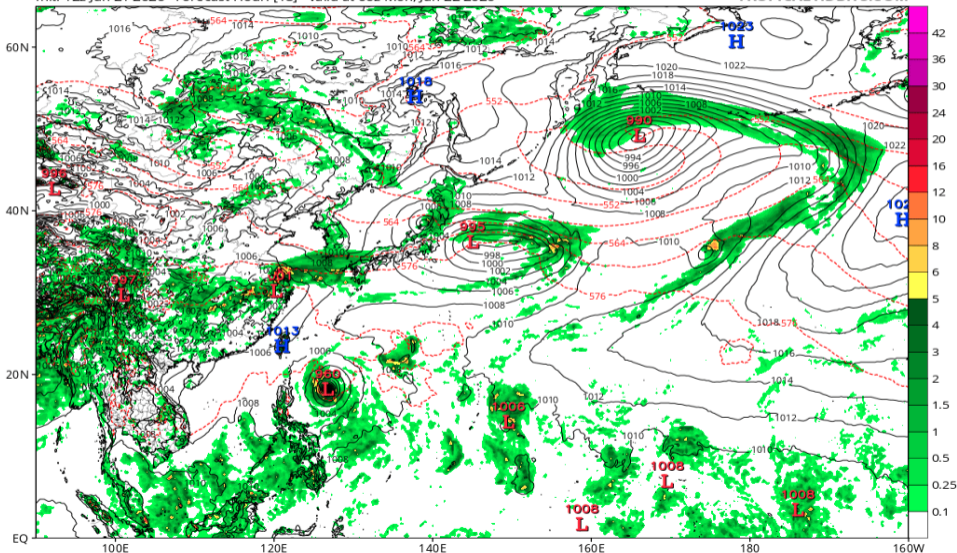


# 地上気圧配置 (ECMWF 06/22 06Z 予報)

ECMWF Instantaneous Precip Rate (mm/hr), MSLP (hPa) & 1000-500mb Thickness (dam)

Init: 12z Jun 21 2026 Forecast Hour: [18] valid at 06z Mon, Jun 22 2026

TROPICALTIDBITS.COM

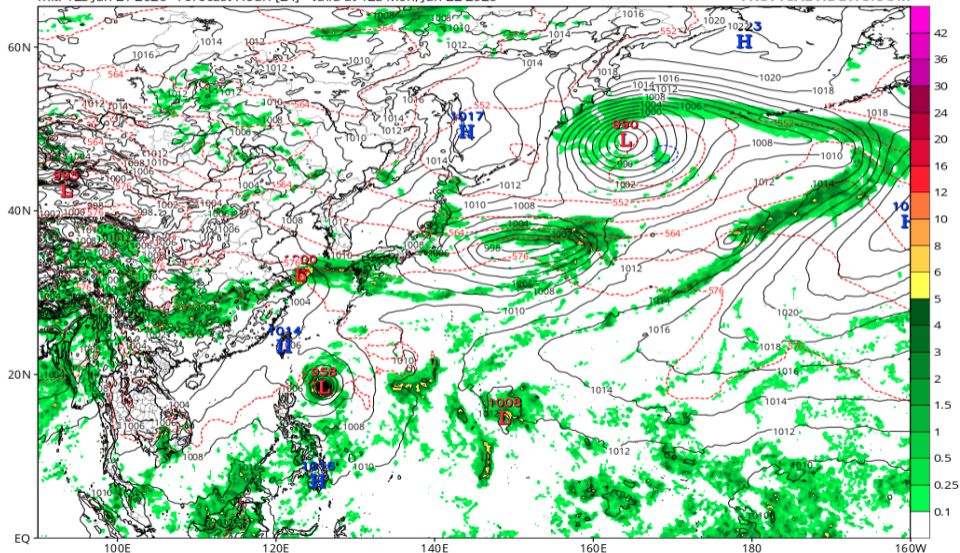


# 地上気圧配置 (ECMWF 06/22 12Z 予報)

ECMWF Instantaneous Precip Rate (mm/hr), MSLP (hPa) & 1000-500mb Thickness (dam)

Init: 12z Jun 21 2026 Forecast Hour: [24] valid at 12z Mon, Jun 22 2026

TROPICALTIDBITS.COM

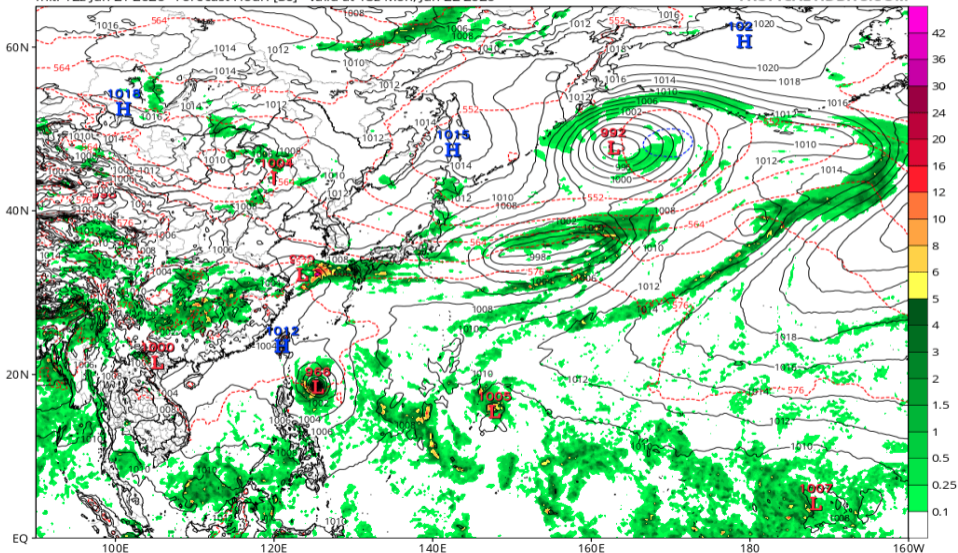


# 地上気圧配置 (ECMWF 06/22 18Z 予報)

ECMWF Instantaneous Precip Rate (mm/hr), MSLP (hPa) & 1000-500mb Thickness (dam)

Init: 12z Jun 21 2026 Forecast Hour: [30] valid at 18z Mon, Jun 22 2026

TROPICALTIDBITS.COM

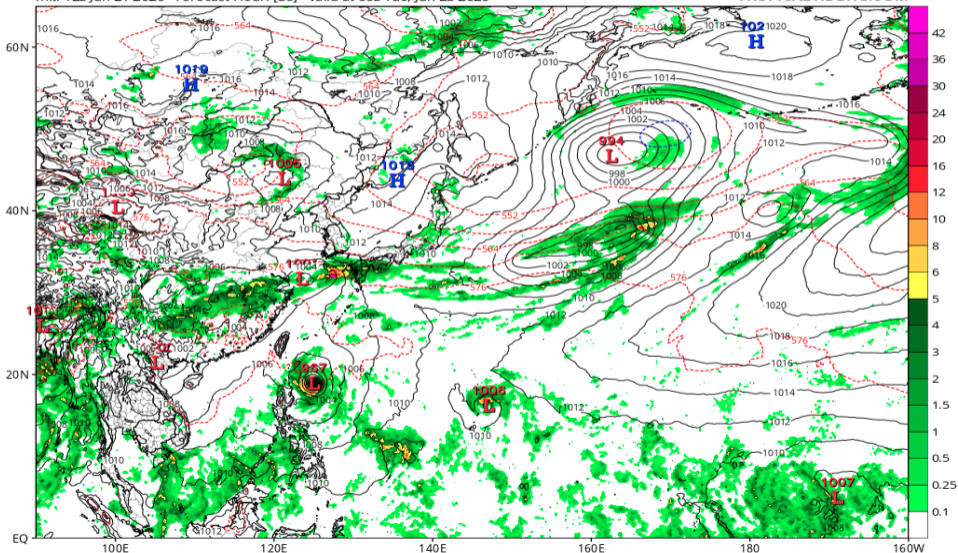


# 地上気圧配置 (ECMWF 06/23 00Z 予報)

ECMWF Instantaneous Precip Rate (mm/hr), MSLP (hPa) & 1000-500mb Thickness (dam)

Init: 12z Jun 21 2026 Forecast Hour: [36] valid at 00z Tue, Jun 23 2026

TROPICALTIDBITS.COM

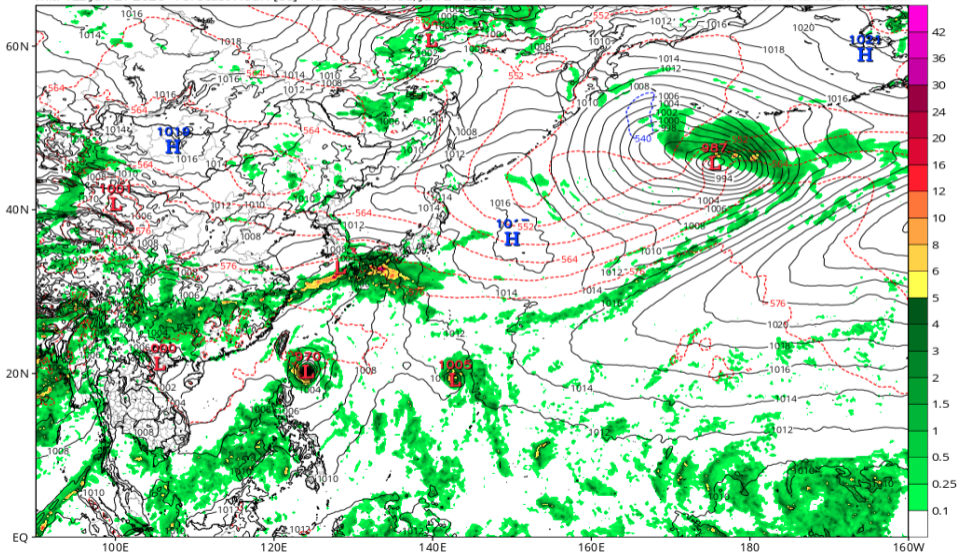


# 地上気圧配置 (ECMWF 06/24 00Z 予報)

ECMWF Instantaneous Precip Rate (mm/hr), MSLP (hPa) & 1000-500mb Thickness (dam)

Init: 12z Jun 21 2026 Forecast Hour: [60] valid at 00z Wed, Jun 24 2026

TROPICALTIDBITS.COM

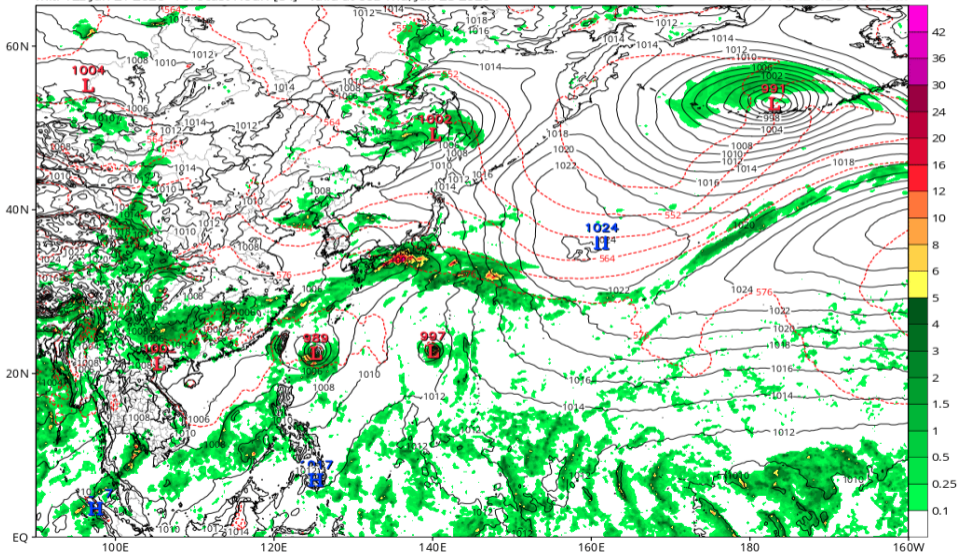


# 地上気圧配置 (ECMWF 06/25 00Z 予報)

ECMWF Instantaneous Precip Rate (mm/hr), MSLP (hPa) & 1000-500mb Thickness (dam)

Init: 12z Jun 21 2026 Forecast Hour: [84] valid at 00z Thu, Jun 25 2026

TROPICALTIDBITS.COM

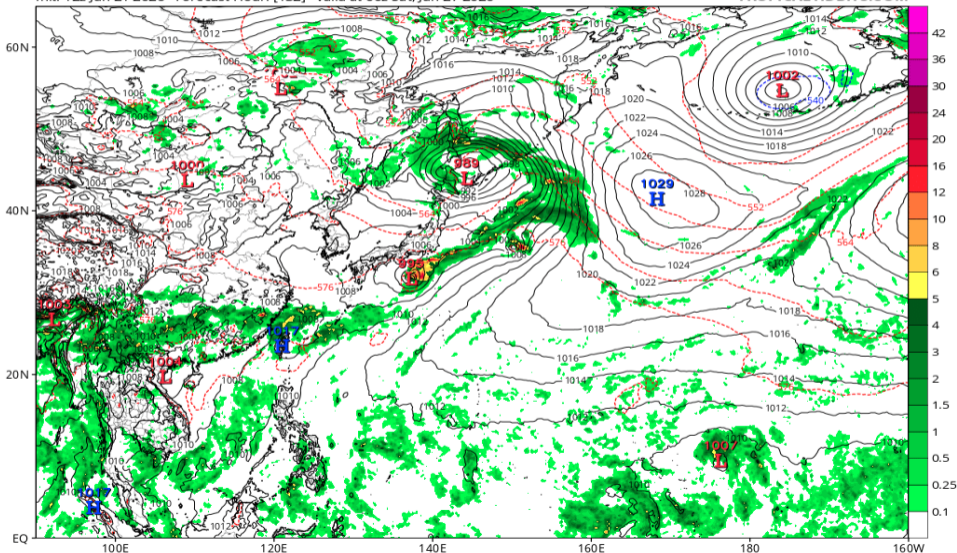


# 地上気圧配置 (ECMWF 06/27 00Z 予報)

ECMWF Instantaneous Precip Rate (mm/hr), MSLP (hPa) & 1000-500mb Thickness (dam)

Init: 12z Jun 21 2026 Forecast Hour: [132] valid at 00z Sat, Jun 27 2026

TROPICALTIDBITS.COM

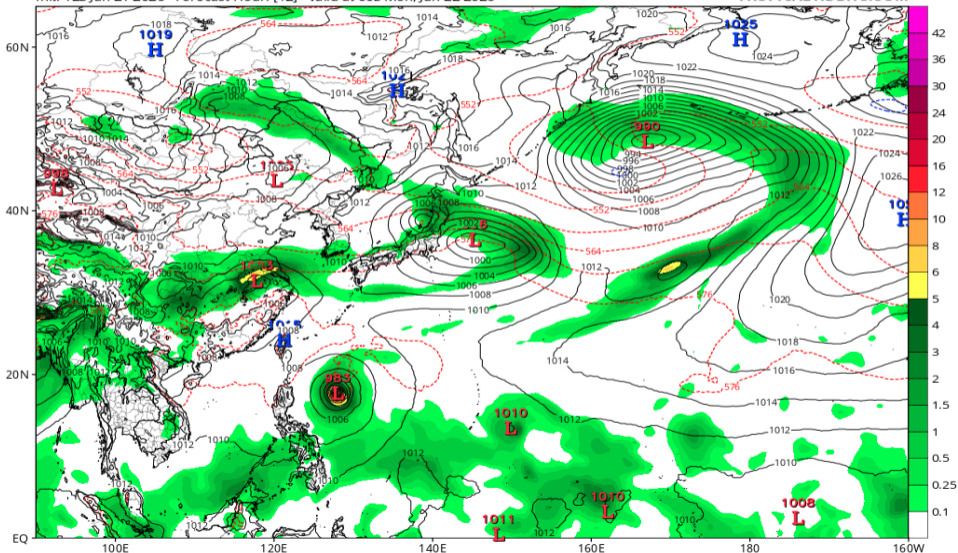


# 地上気圧配置 (AIFS 06/22 00Z 予報)

EC-AIFS 6-hour Averaged Precip Rate (mm/hr), MSLP (hPa) & 1000-500mb Thickness (dam)

Init: 12z Jun 21 2026 Forecast Hour: [12] valid at 00z Mon, Jun 22 2026

TROPICALTIDBITS.COM

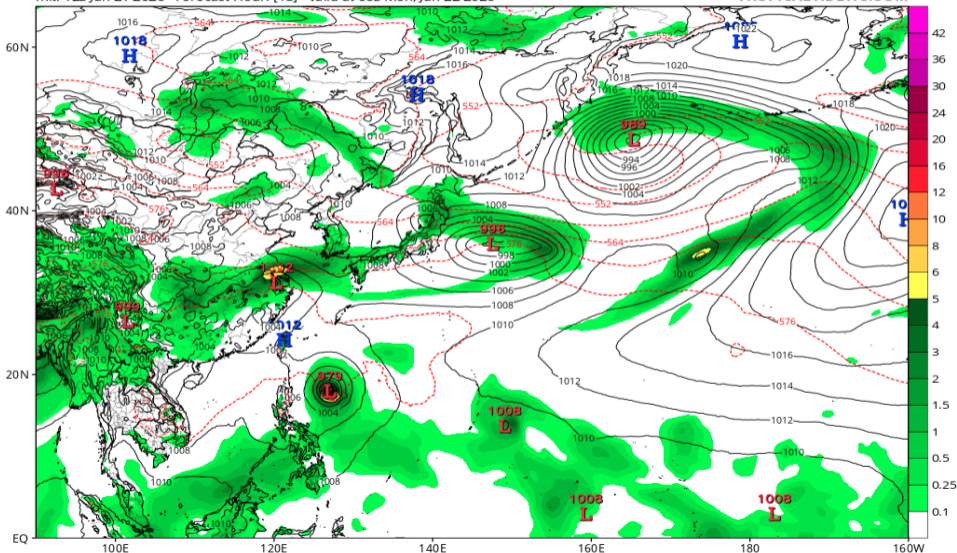


# 地上気圧配置 (AIFS 06/22 06Z 予報)

EC-AIFS 6-hour Averaged Precip Rate (mm/hr), MSLP (hPa) & 1000-500mb Thickness (dam)

Init: 12z Jun 21 2026 Forecast Hour: [18] valid at 06z Mon, Jun 22 2026

TROPICALTIDBITS.COM

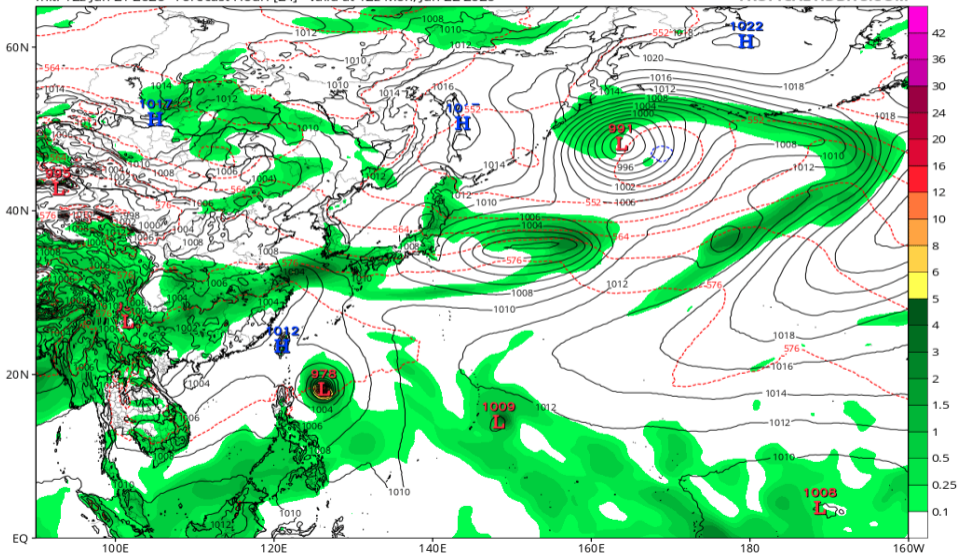


# 地上気圧配置 (AIFS 06/22 12Z 予報)

EC-AIFS 6-hour Averaged Precip Rate (mm/hr), MSLP (hPa) & 1000-500mb Thickness (dam)

Init: 12z Jun 21 2026 Forecast Hour: [24] valid at 12z Mon, Jun 22 2026

TROPICALTIDBITS.COM

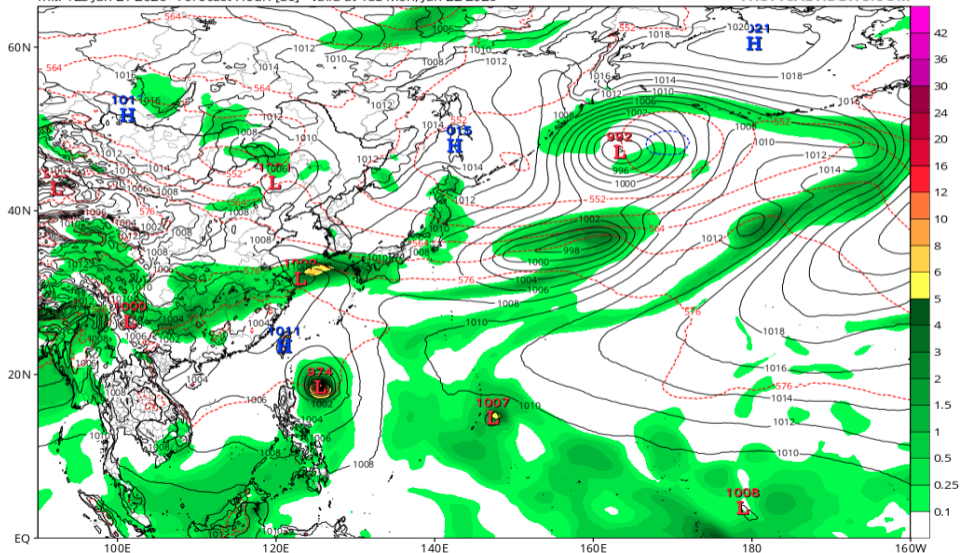


# 地上気圧配置 (AIFS 06/22 18Z 予報)

EC-AIFS 6-hour Averaged Precip Rate (mm/hr), MSLP (hPa) & 1000-500mb Thickness (dam)

Init: 12z Jun 21 2026 Forecast Hour: [30] valid at 18z Mon, Jun 22 2026

TROPICALTIDBITS.COM

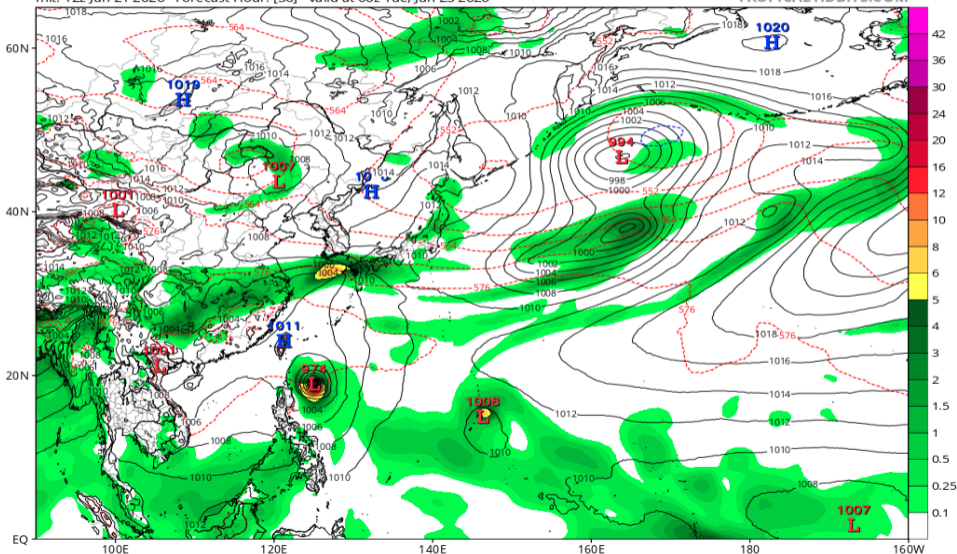


# 地上気圧配置 (AIFS 06/23 00Z 予報)

EC-AIFS 6-hour Averaged Precip Rate (mm/hr), MSLP (hPa) & 1000-500mb Thickness (dam)

Init: 12z Jun 21 2026 Forecast Hour: [36] valid at 00z Tue, Jun 23 2026

TROPICALTIDBITS.COM

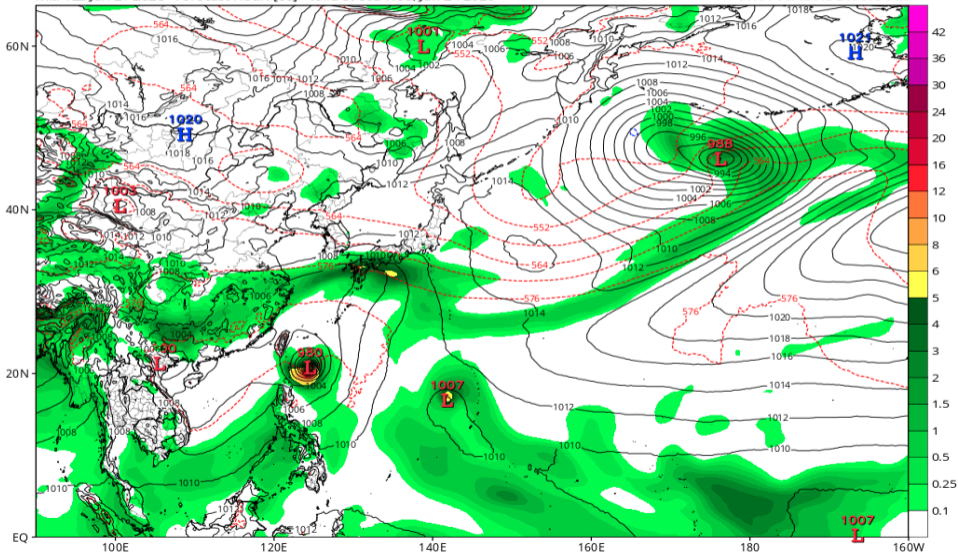


# 地上気圧配置 (AIFS 06/24 00Z 予報)

EC-AIFS 6-hour Averaged Precip Rate (mm/hr), MSLP (hPa) & 1000-500mb Thickness (dam)

Init: 12z Jun 21 2026 Forecast Hour: [60] valid at 00z Wed, Jun 24 2026

TROPICALTIDBITS.COM

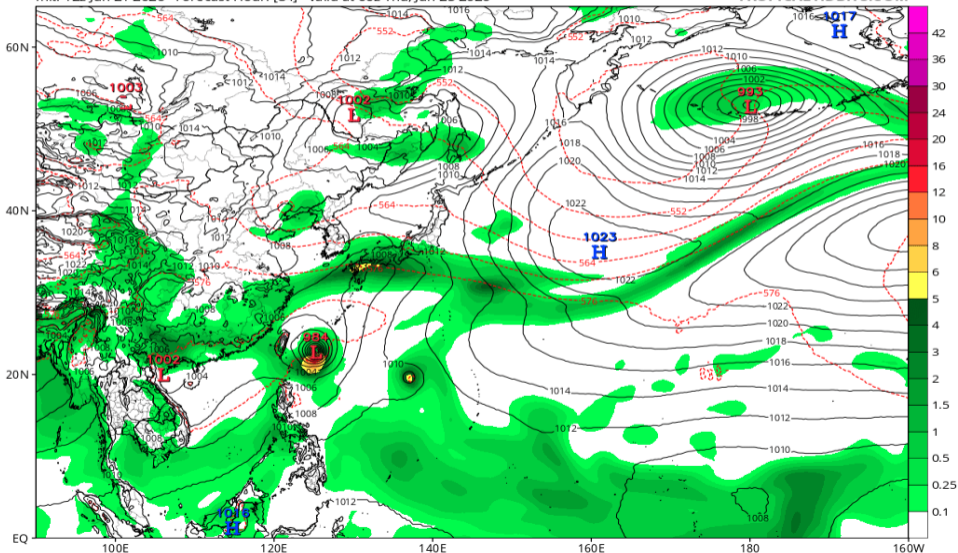


# 地上気圧配置 (AIFS 06/25 00Z 予報)

EC-AIFS 6-hour Averaged Precip Rate (mm/hr), MSLP (hPa) & 1000-500mb Thickness (dam)

Init: 12z Jun 21 2026 Forecast Hour: [84] valid at 00z Thu, Jun 25 2026

TROPICALTIDBITS.COM

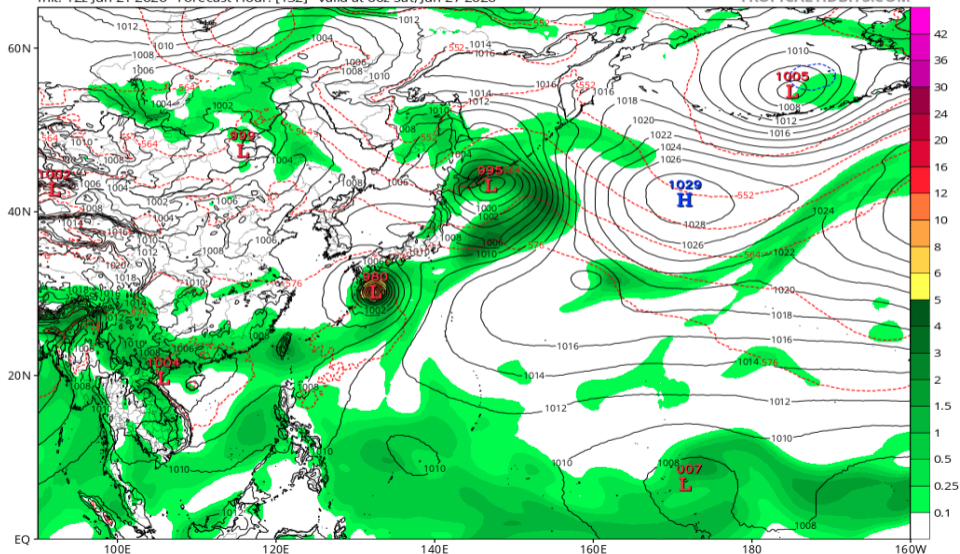


# 地上気圧配置 (AIFS 06/27 00Z 予報)

EC-AIFS 6-hour Averaged Precip Rate (mm/hr), MSLP (hPa) & 1000-500mb Thickness (dam)

Init: 12z Jun 21 2026 Forecast Hour: [132] valid at 00z Sat, Jun 27 2026

TROPICALTIDBITS.COM

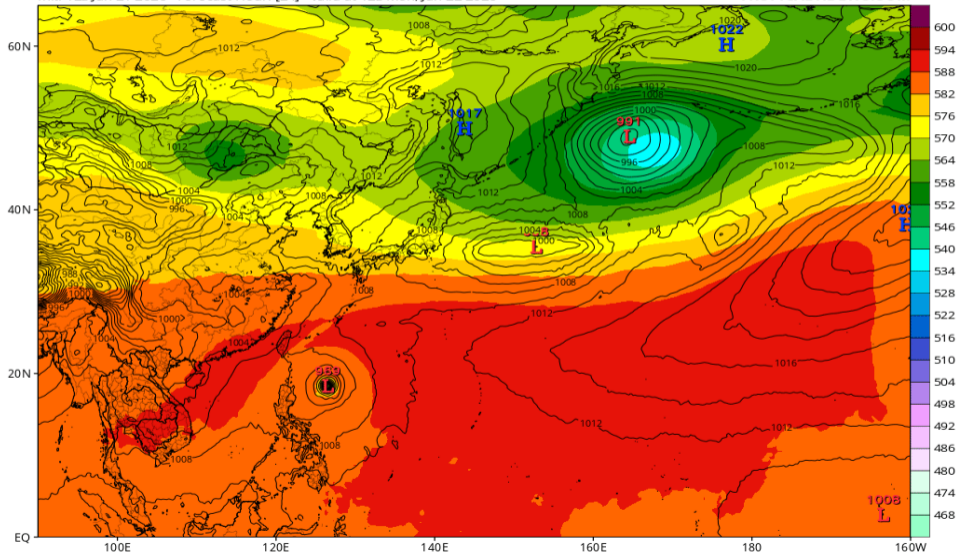


# Z500/地上気圧配置 (GFS 06/22 12Z 予報)

GFS 500mb Geopotential Height (dam) & MSLP (mb)

Init: 12z Jun 21 2026 Forecast Hour: [24] valid at 12z Mon, Jun 22 2026

TROPICALTIDBITS.COM

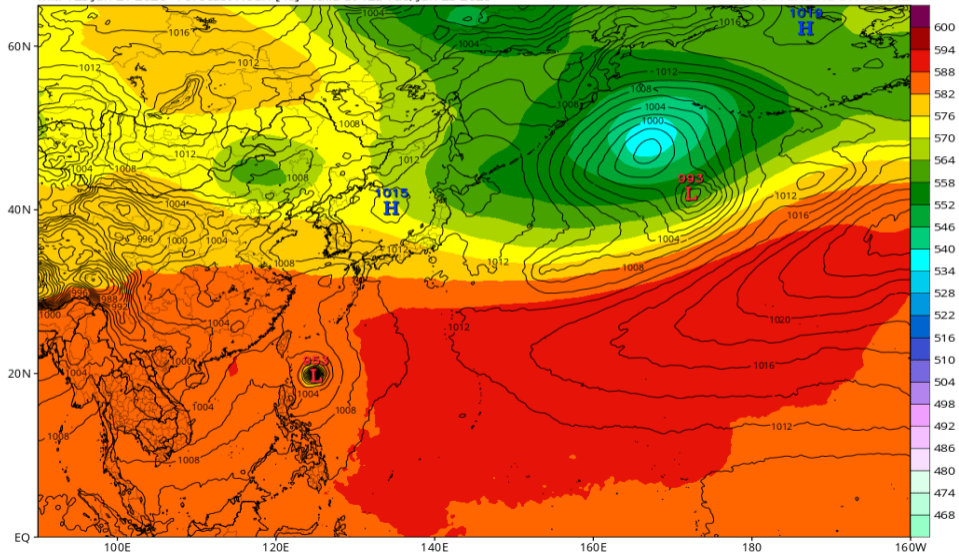


# Z500/地上気圧配置 (GFS 06/23 12Z 予報)

GFS 500mb Geopotential Height (dam) & MSLP (mb)

Init: 12z Jun 21 2026 Forecast Hour: [48] valid at 12z Tue, Jun 23 2026

TROPICALTIDBITS.COM

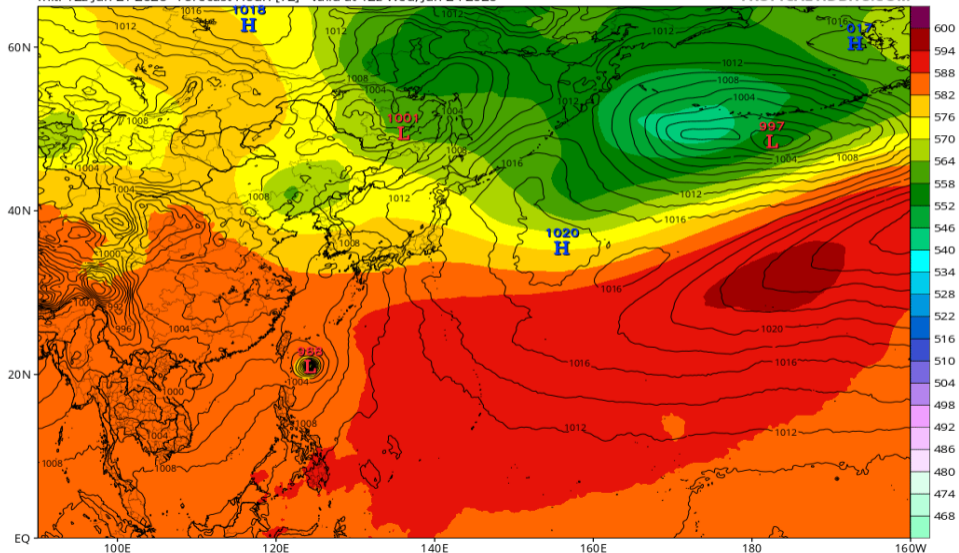


# Z500/地上気圧配置 (GFS 06/24 12Z 予報)

GFS 500mb Geopotential Height (dam) & MSLP (mb)

Init: 12z Jun 21 2026 Forecast Hour: [72] valid at 12z Wed, Jun 24 2026

TROPICALTIDBITS.COM

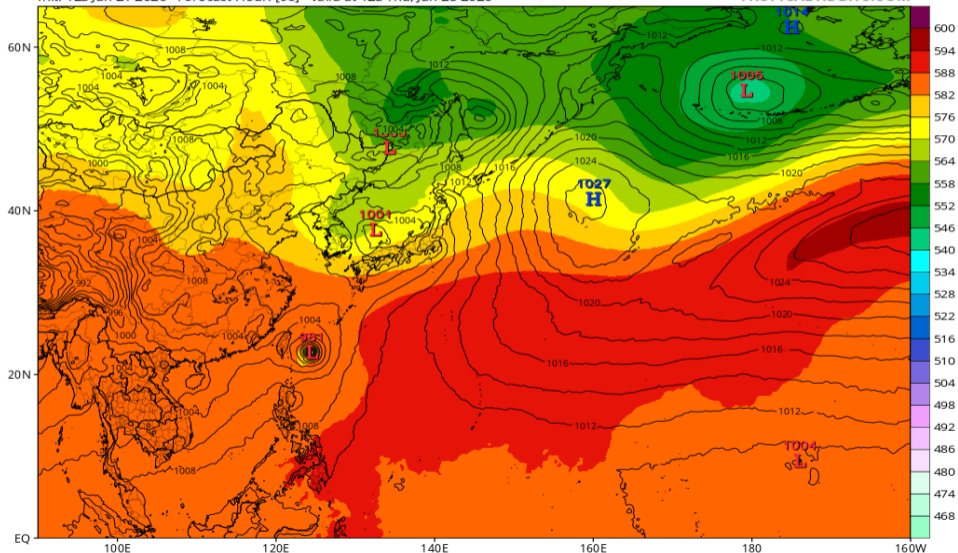


# Z500/地上気圧配置 (GFS 06/25 12Z 予報)

GFS 500mb Geopotential Height (dam) & MSLP (mb)

Init: 12z Jun 21 2026 Forecast Hour: [96] valid at 12z Thu, Jun 25 2026

TROPICALTIDBITS.COM

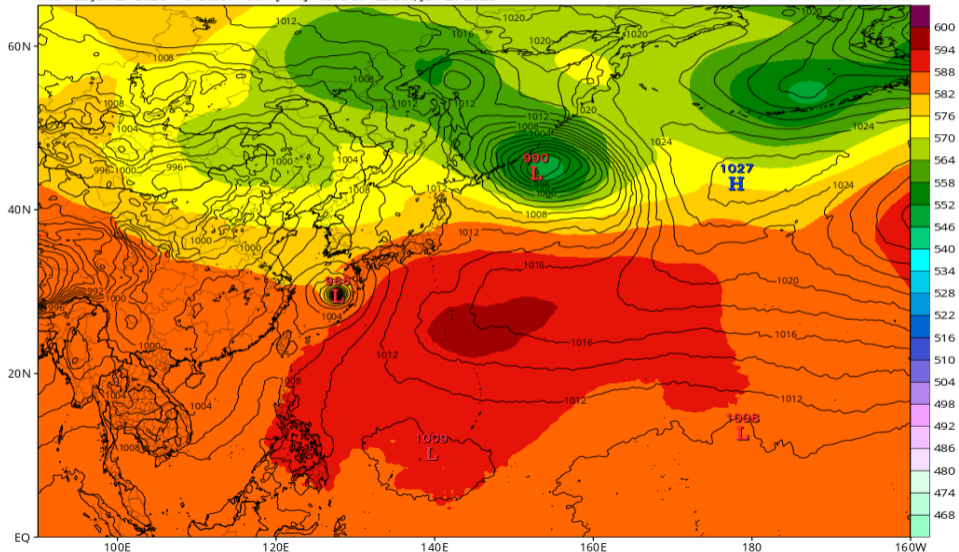


# Z500/地上気圧配置 (GFS 06/27 12Z 予報)

GFS 500mb Geopotential Height (dam) & MSLP (mb)

Init: 12z Jun 21 2026 Forecast Hour: [144] valid at 12z Sat, Jun 27 2026

TROPICALTIDBITS.COM

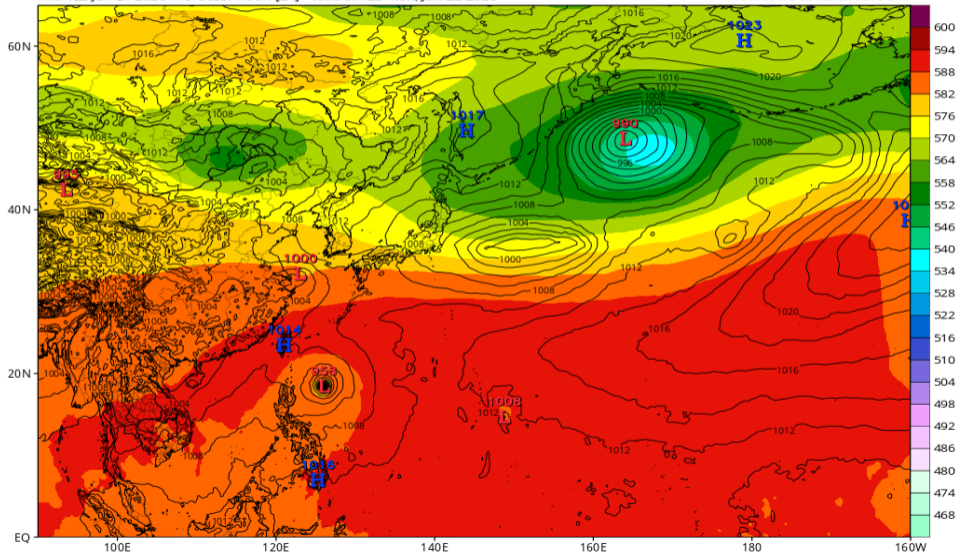


# Z500/地上気圧配置 (ECMWF 06/22 12Z 予報)

ECMWF 500mb Geopotential Height (dam) & MSLP (mb)

Init: 12z Jun 21 2026 Forecast Hour: [24] valid at 12z Mon, Jun 22 2026

TROPICALTIDBITS.COM

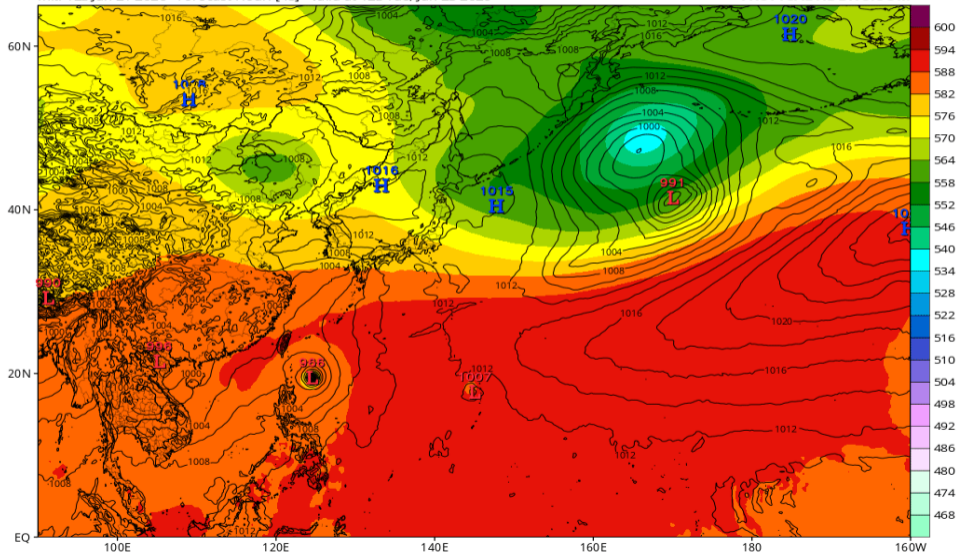


# Z500/地上気圧配置 (ECMWF 06/23 12Z 予報)

ECMWF 500mb Geopotential Height (dam) & MSLP (mb)

Init: 12z Jun 21 2026 Forecast Hour: [48] valid at 12z Tue, Jun 23 2026

TROPICALTIDBITS.COM

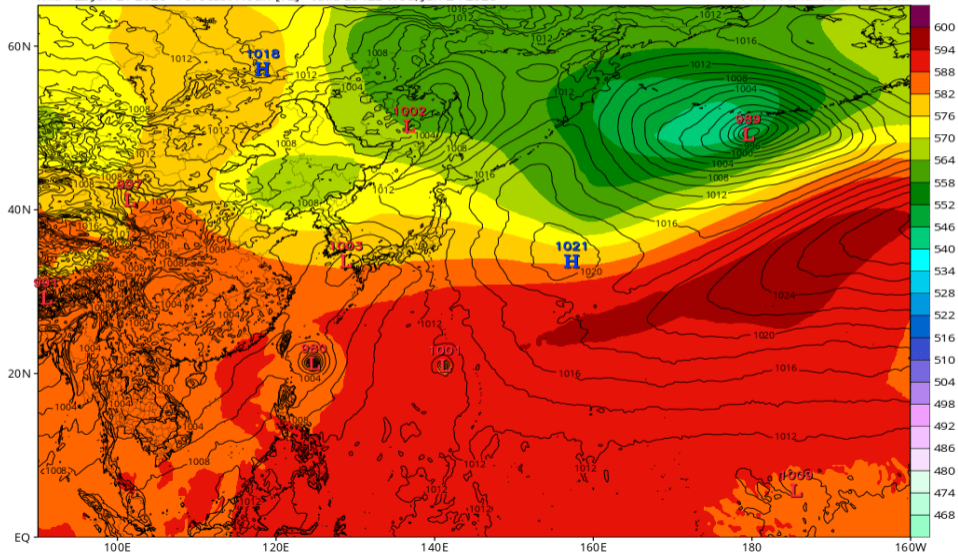


# Z500/地上気圧配置 (ECMWF 06/24 12Z 予報)

ECMWF 500mb Geopotential Height (dam) & MSLP (mb)

Init: 12z Jun 21 2026 Forecast Hour: [72] valid at 12z Wed, Jun 24 2026

TROPICALTIDBITS.COM

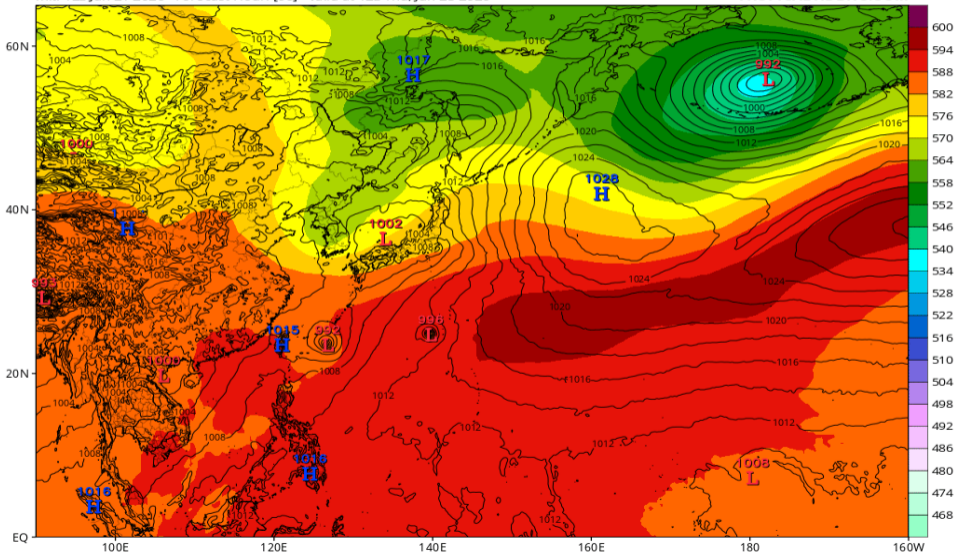


# Z500/地上気圧配置 (ECMWF 06/25 12Z 予報)

ECMWF 500mb Geopotential Height (dam) & MSLP (mb)

Init: 12z Jun 21 2026 Forecast Hour: [96] valid at 12z Thu, Jun 25 2026

TROPICALTIDBITS.COM

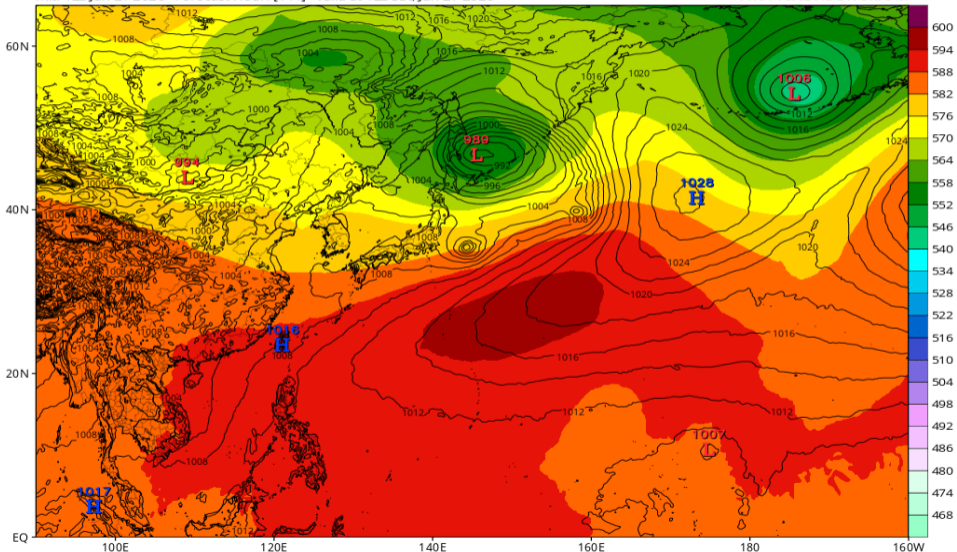


# Z500/地上気圧配置 (ECMWF 06/27 12Z 予報)

ECMWF 500mb Geopotential Height (dam) & MSLP (mb)

Init: 12z Jun 21 2026 Forecast Hour: [144] valid at 12z Sat, Jun 27 2026

TROPICALTIDBITS.COM

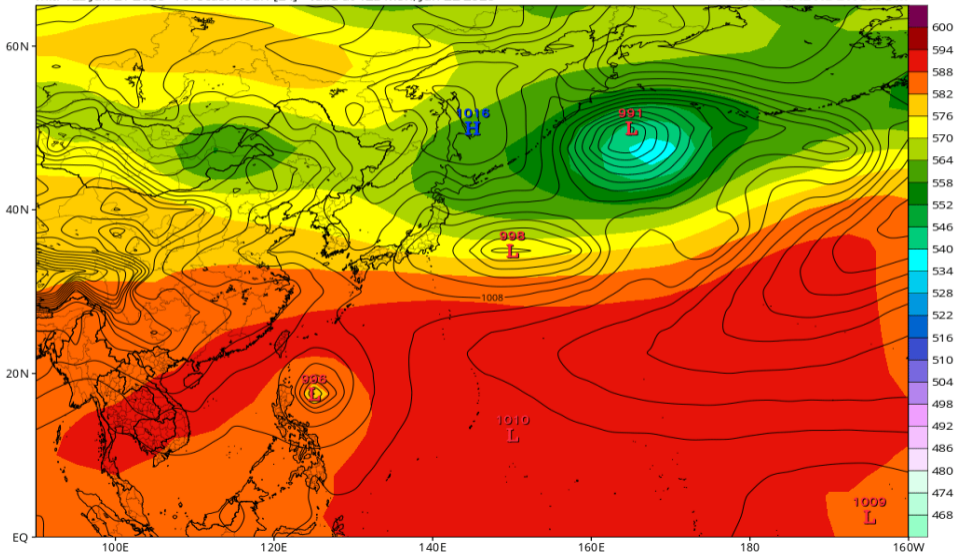


# Z500/地上気圧配置 (JMA-GSM 06/22 12Z 予報)

JMA 500mb Geopotential Height (dam) & MSLP (mb)

Init: 12z Jun 21 2026 Forecast Hour: [24] valid at 12z Mon, Jun 22 2026

TROPICALTIDBITS.COM

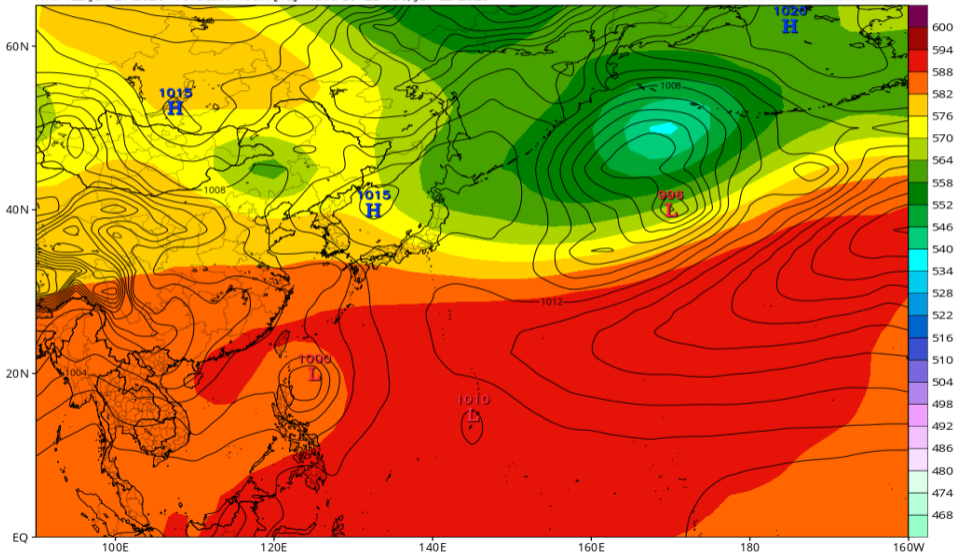


# Z500/地上気圧配置 (JMA-GSM 06/23 12Z 予報)

JMA 500mb Geopotential Height (dam) & MSLP (mb)

Init: 12z Jun 21 2026 Forecast Hour: [48] valid at 12z Tue, Jun 23 2026

TROPICALTIDBITS.COM

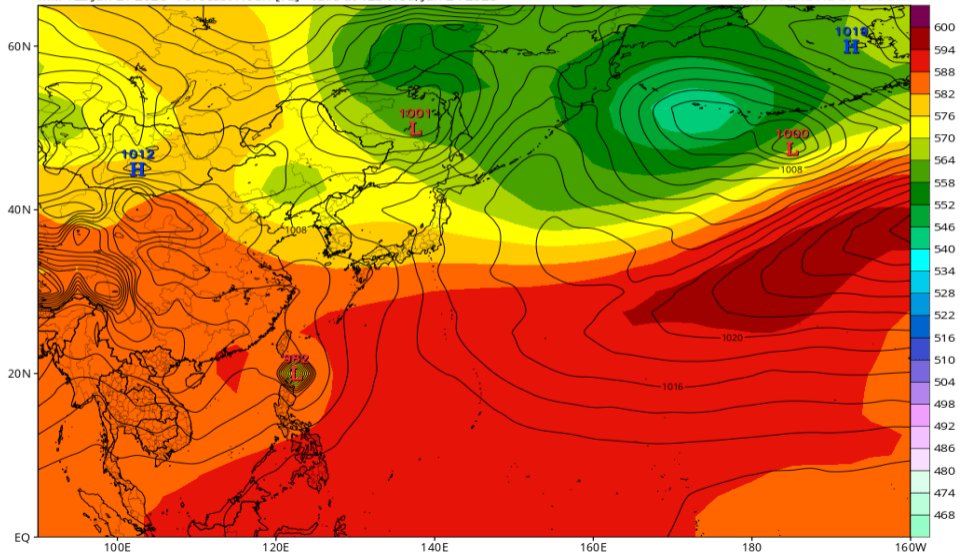


# Z500/地上気圧配置 (JMA-GSM 06/24 12Z 予報)

JMA 500mb Geopotential Height (dam) & MSLP (mb)

Init: 12z Jun 21 2026 Forecast Hour: [72] valid at 12z Wed, Jun 24 2026

TROPICALTIDBITS.COM

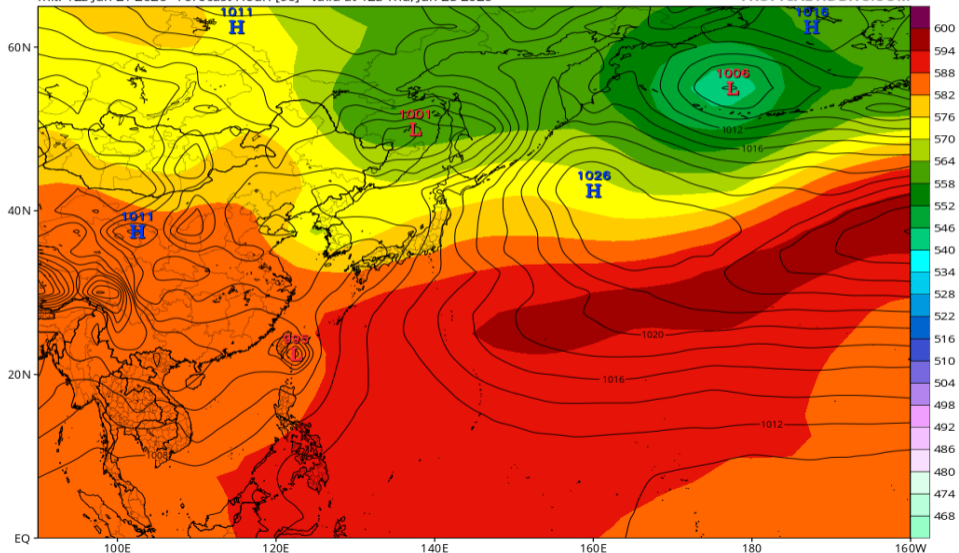


# Z500/地上気圧配置 (JMA-GSM 06/25 12Z 予報)

JMA 500mb Geopotential Height (dam) & MSLP (mb)

Init: 12z Jun 21 2026 Forecast Hour: [96] valid at 12z Thu, Jun 25 2026

TROPICALTIDBITS.COM

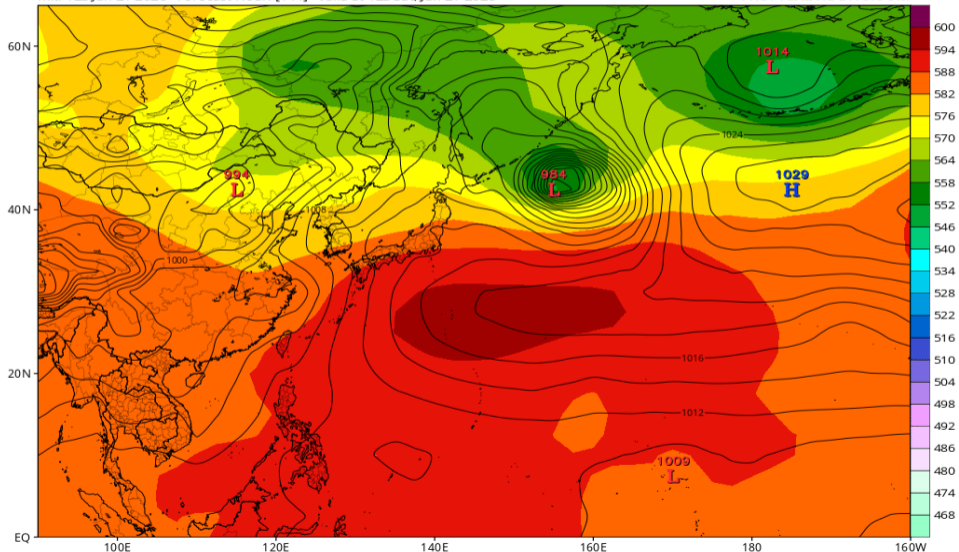


# Z500/地上気圧配置 (JMA-GSM 06/27 12Z 予報)

JMA 500mb Geopotential Height (dam) & MSLP (mb)

Init: 12z Jun 21 2026 Forecast Hour: [144] valid at 12z Sat, Jun 27 2026

TROPICALTIDBITS.COM

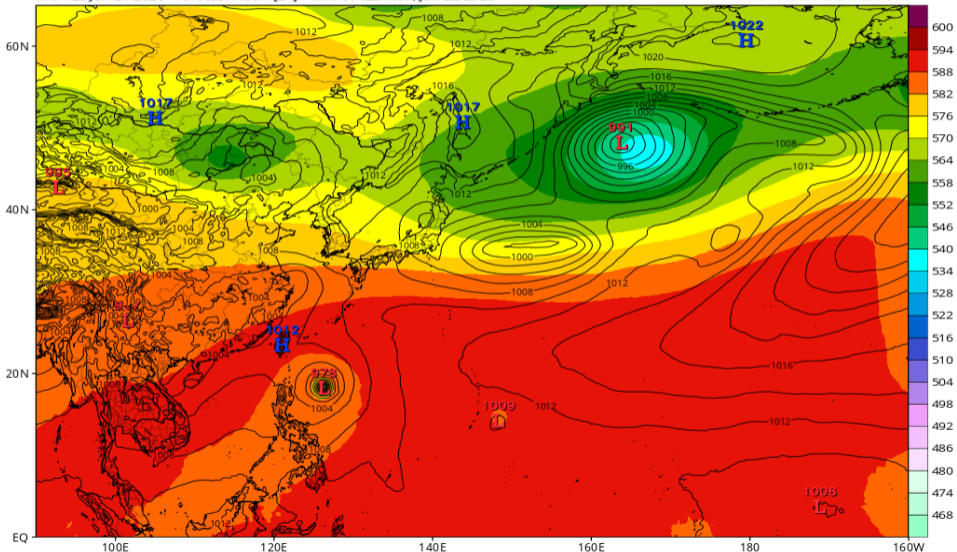


# Z500/地上気圧配置 (AIFS 06/22 12Z 予報)

EC-AIFS 500mb Geopotential Height (dam) & MSLP (mb)

Init: 12z Jun 21 2026 Forecast Hour: [24] valid at 12z Mon, Jun 22 2026

TROPICALTIDBITS.COM

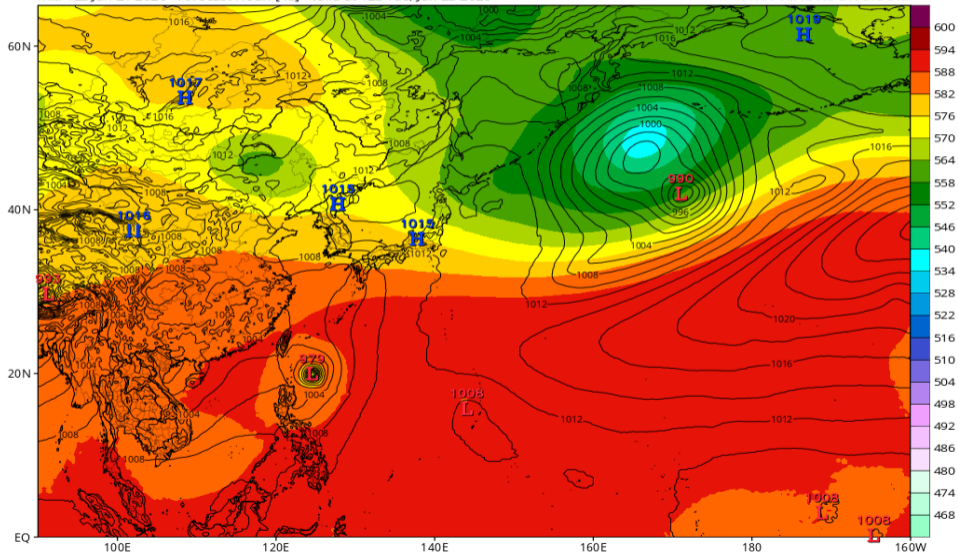


# Z500/地上気圧配置 (AIFS 06/23 12Z 予報)

EC-AIFS 500mb Geopotential Height (dam) & MSLP (mb)

Init: 12z Jun 21 2026 Forecast Hour: [48] valid at 12z Tue, Jun 23 2026

TROPICALTIDBITS.COM

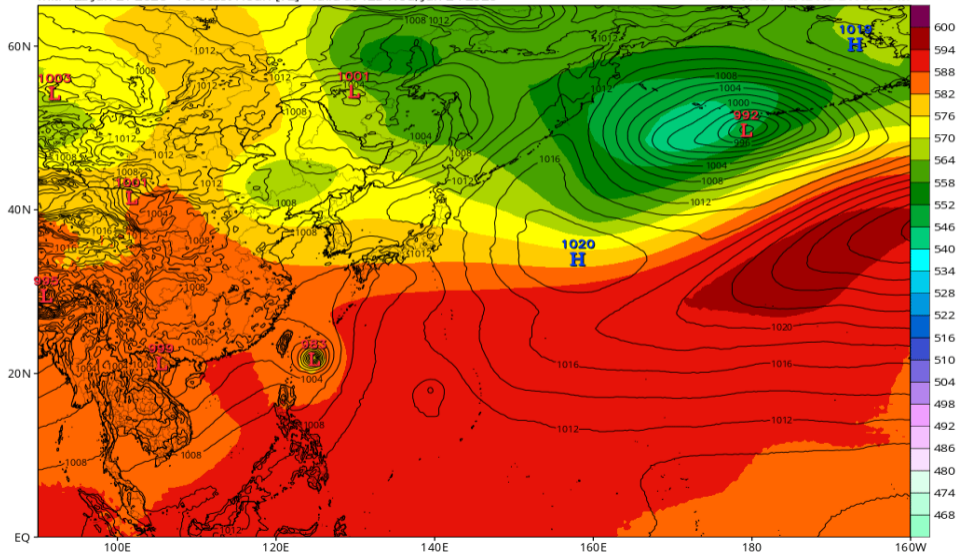


# Z500/地上気圧配置 (AIFS 06/24 12Z 予報)

EC-AIFS 500mb Geopotential Height (dam) & MSLP (mb)

Init: 12z Jun 21 2026 Forecast Hour: [72] valid at 12z Wed, Jun 24 2026

TROPICALTIDBITS.COM

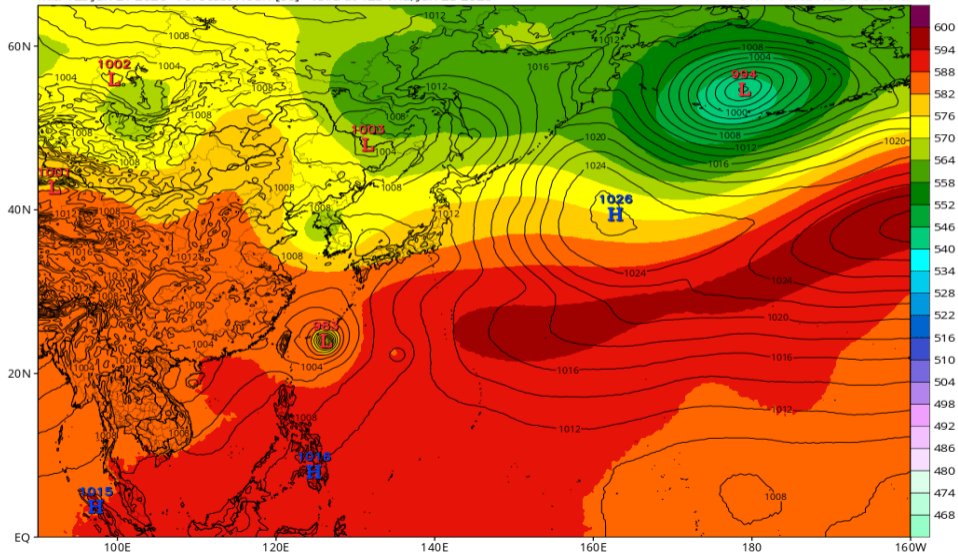


# Z500/地上気圧配置 (AIFS 06/25 12Z 予報)

EC-AIFS 500mb Geopotential Height (dam) & MSLP (mb)

Init: 12z Jun 21 2026 Forecast Hour: [96] valid at 12z Thu, Jun 25 2026

TROPICALTIDBITS.COM

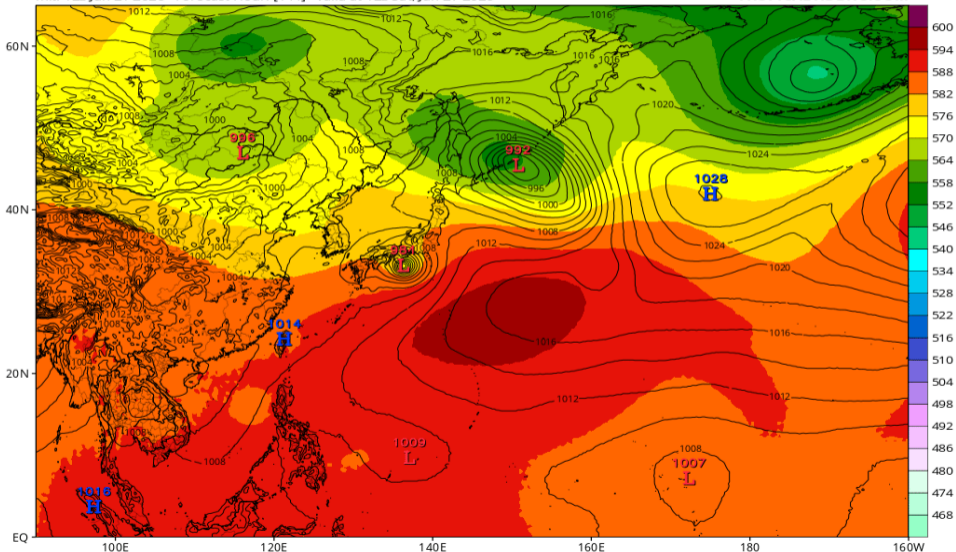


# Z500/地上気圧配置 (AIFS 06/27 12Z 予報)

EC-AIFS 500mb Geopotential Height (dam) & MSLP (mb)

Init: 12z Jun 21 2026 Forecast Hour: [144] valid at 12z Sat, Jun 27 2026

TROPICALTIDBITS.COM

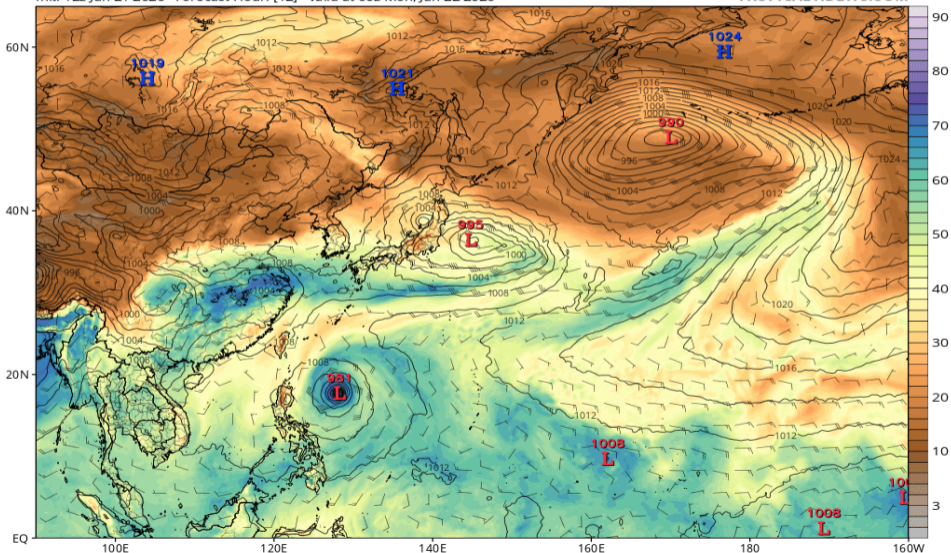


# 可降水量 (GFS 06/22 00Z 予報)

GFS MSLP (mb), Total Precipitable Water (mm), and 850mb Wind (kt)

Init: 12z Jun 21 2026 Forecast Hour: [12] valid at 00z Mon, Jun 22 2026

TROPICALTIDBITS.COM

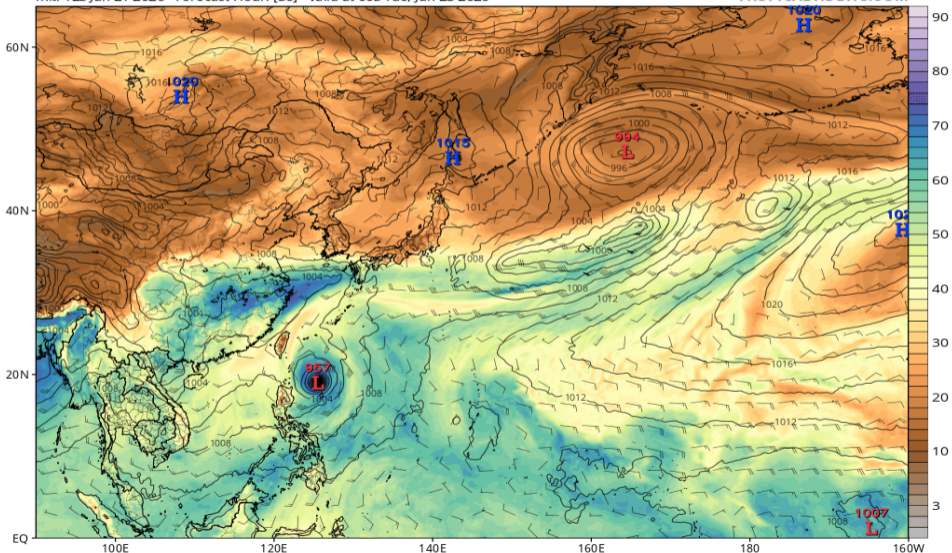


# 可降水量 (GFS 06/23 00Z 予報)

GFS MSLP (mb), Total Precipitable Water (mm), and 850mb Wind (kt)

Init: 12z Jun 21 2026 Forecast Hour: [36] valid at 00z Tue, Jun 23 2026

TROPICALTIDBITS.COM

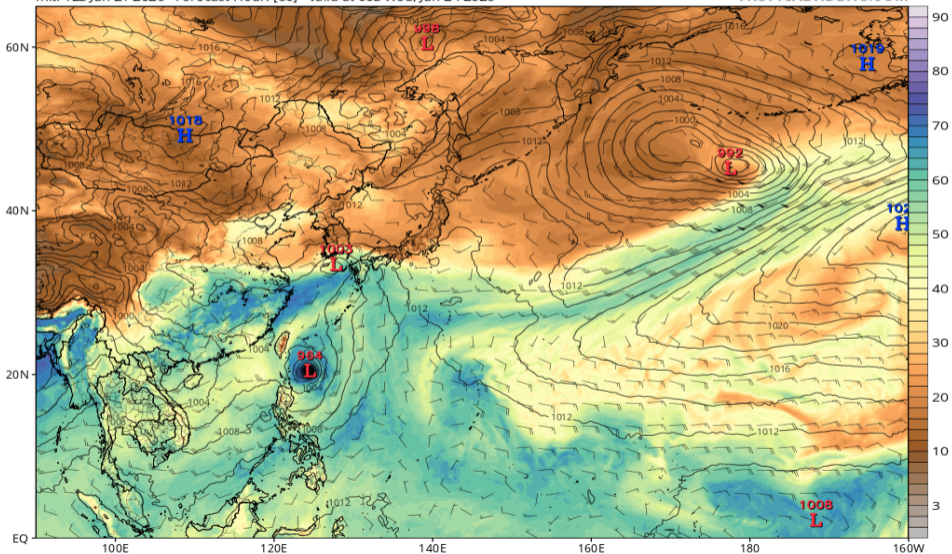


# 可降水量 (GFS 06/24 00Z 予報)

GFS MSLP (mb), Total Precipitable Water (mm), and 850mb Wind (kt)

Init: 12z Jun 21 2026 Forecast Hour: [60] valid at 00z Wed, Jun 24 2026

TROPICALTIDBITS.COM

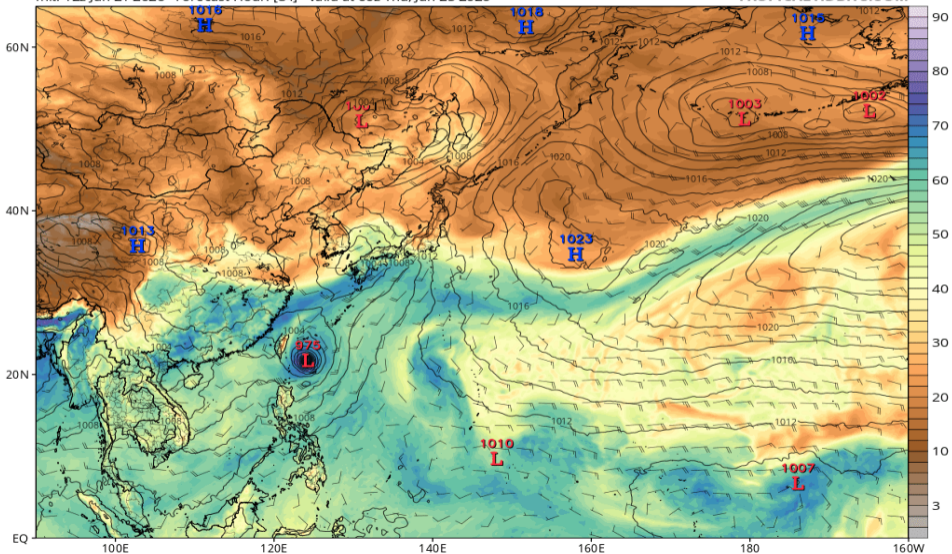


# 可降水量 (GFS 06/25 00Z 予報)

GFS MSLP (mb), Total Precipitable Water (mm), and 850mb Wind (kt)

Init: 12z Jun 21 2026 Forecast Hour: [84] valid at 00z Thu, Jun 25 2026

TROPICALTIDBITS.COM

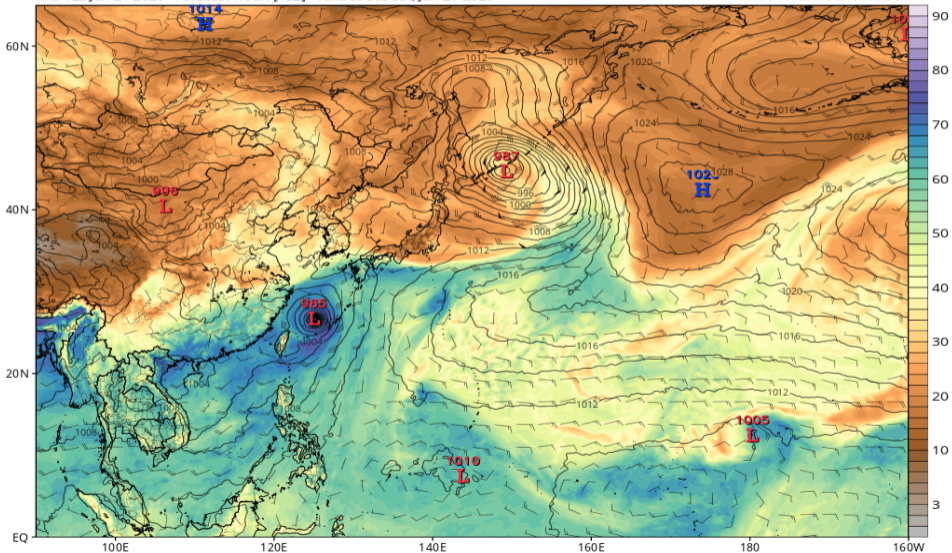


# 可降水量 (GFS 06/27 00Z 予報)

GFS MSLP (mb), Total Precipitable Water (mm), and 850mb Wind (kt)

Init: 12z Jun 21 2026 Forecast Hour: [132] valid at 00z Sat, Jun 27 2026

TROPICALTIDBITS.COM

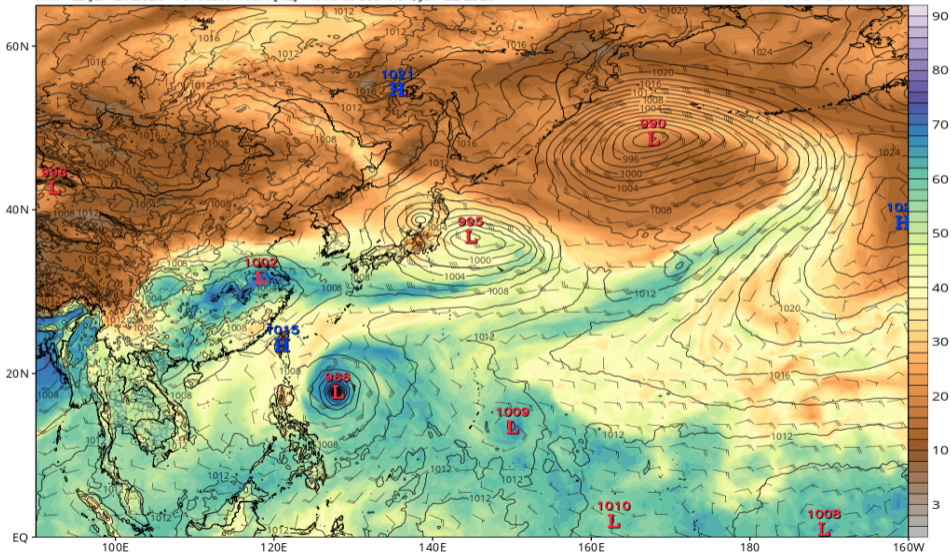


# 可降水量 (ECMWF 06/22 00Z 予報)

ECMWF MSLP (mb), Total Precipitable Water (mm), and 850mb Wind (kt)

Init: 12z Jun 21 2026 Forecast Hour: [12] valid at 00z Mon, Jun 22 2026

TROPICALTIDBITS.COM

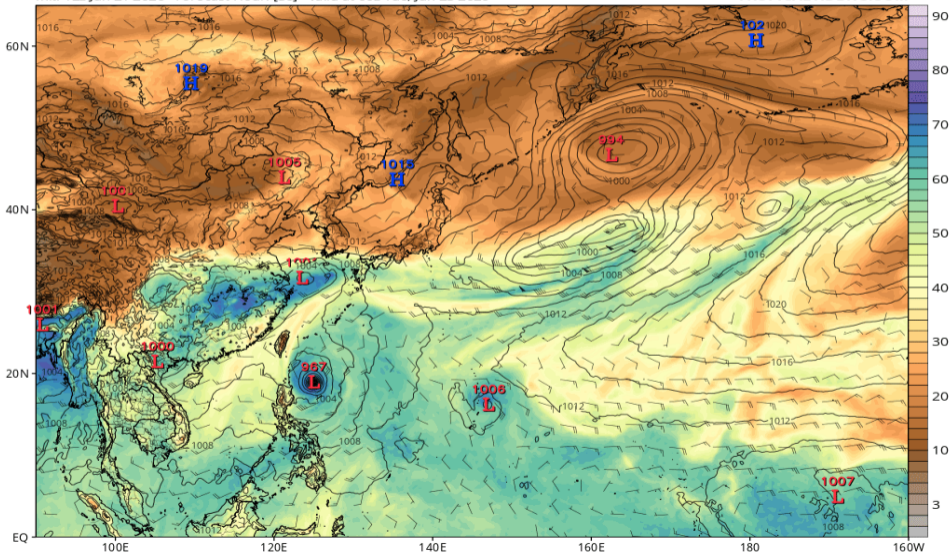


# 可降水量 (ECMWF 06/23 00Z 予報)

ECMWF MSLP (mb), Total Precipitable Water (mm), and 850mb Wind (kt)

Init: 12z Jun 21 2026 Forecast Hour: [36] valid at 00z Tue, Jun 23 2026

TROPICALTIDBITS.COM

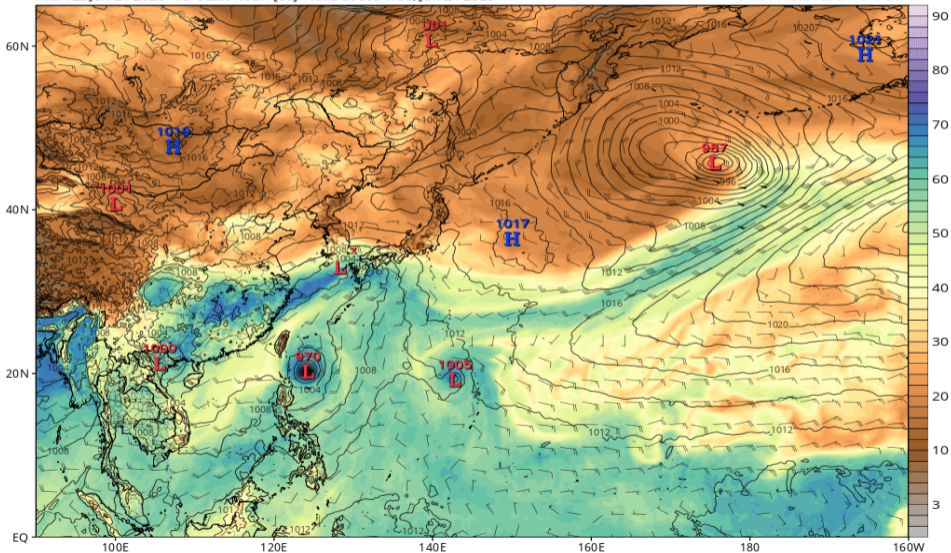


# 可降水量 (ECMWF 06/24 00Z 予報)

ECMWF MSLP (mb), Total Precipitable Water (mm), and 850mb Wind (kt)

Init: 12z Jun 21 2026 Forecast Hour: [60] valid at 00z Wed, Jun 24 2026

TROPICALTIDBITS.COM

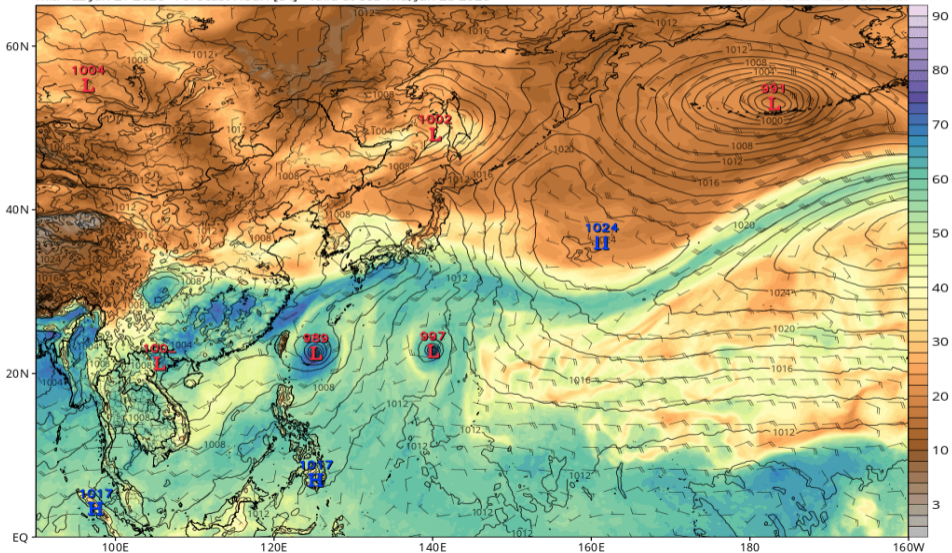


# 可降水量 (ECMWF 06/25 00Z 予報)

ECMWF MSLP (mb), Total Precipitable Water (mm), and 850mb Wind (kt)

Init: 12z Jun 21 2026 Forecast Hour: [84] valid at 00z Thu, Jun 25 2026

TROPICALTIDBITS.COM

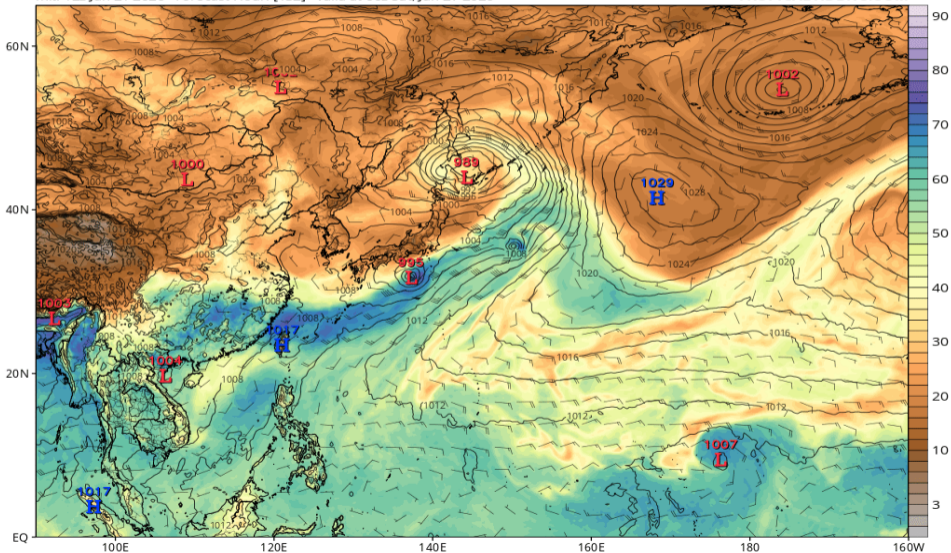


# 可降水量 (ECMWF 06/27 00Z 予報)

ECMWF MSLP (mb), Total Precipitable Water (mm), and 850mb Wind (kt)

Init: 12z Jun 21 2026 Forecast Hour: [132] valid at 00z Sat, Jun 27 2026

TROPICALTIDBITS.COM

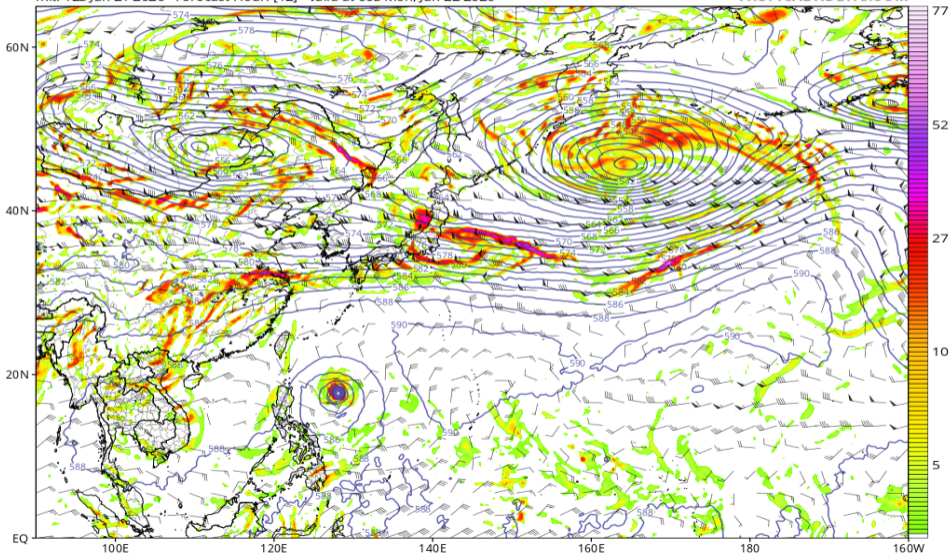


# 渦度 850, Z500, UV200 (GFS 06/22 00Z 予報)

GFS 850 hPa Cyclonic Vorticity ( $10^5 \text{ s}^{-1}$ ), 500 hPa Height (dam), and 200 hPa Wind (kt)

Init: 12z Jun 21 2026 Forecast Hour: [12] valid at 00z Mon, Jun 22 2026

TROPICALTIDBITS.COM

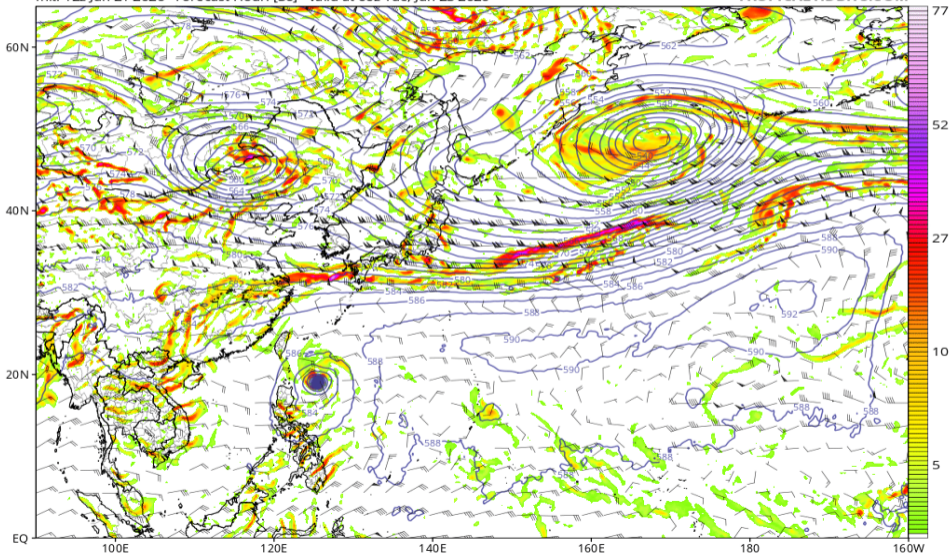


# 渦度 850, Z500, UV200 (GFS 06/23 00Z 予報)

GFS 850 hPa Cyclonic Vorticity ( $10^5 \text{ s}^{-1}$ ), 500 hPa Height (dam), and 200 hPa Wind (kt)

Init: 12z Jun 21 2026 Forecast Hour: [36] valid at 00z Tue, Jun 23 2026

TROPICALTIDBITS.COM

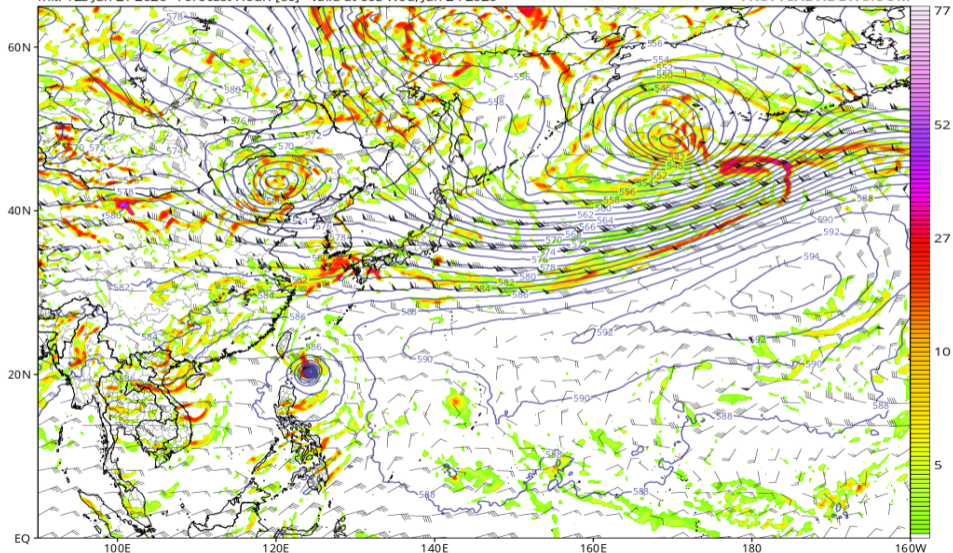


# 渦度 850, Z500, UV200 (GFS 06/24 00Z 予報)

GFS 850 hPa Cyclonic Vorticity ( $10^5 \text{ s}^{-1}$ ), 500 hPa Height (dam), and 200 hPa Wind (kt)

Init: 12z Jun 21 2026 Forecast Hour: [60] valid at 00z Wed, Jun 24 2026

TROPICALTIDBITS.COM

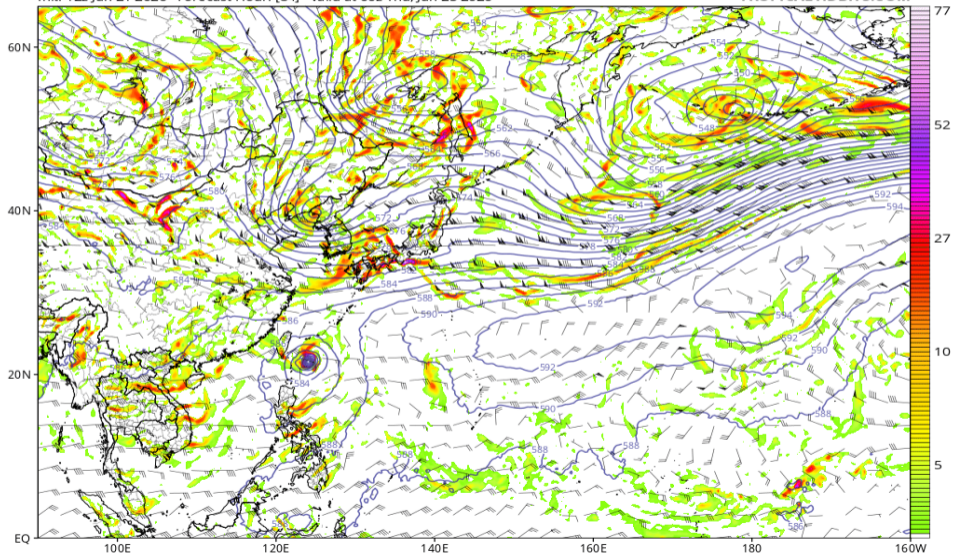


# 渦度 850, Z500, UV200 (GFS 06/25 00Z 予報)

GFS 850 hPa Cyclonic Vorticity ( $10^5 \text{ s}^{-1}$ ), 500 hPa Height (dam), and 200 hPa Wind (kt)

Init: 12z Jun 21 2026 Forecast Hour: [84] valid at 00z Thu, Jun 25 2026

TROPICALTIDBITS.COM

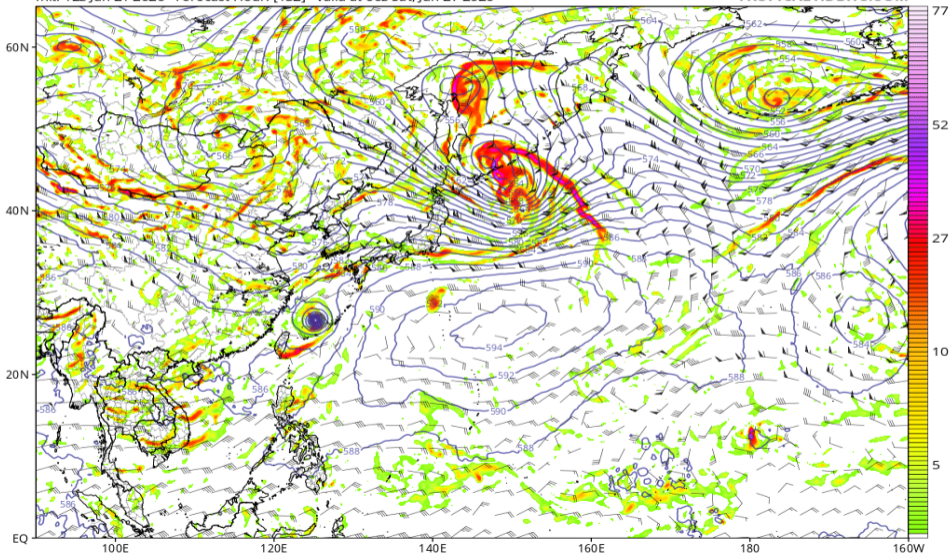


# 渦度 850, Z500, UV200 (GFS 06/27 00Z 予報)

GFS 850 hPa Cyclonic Vorticity ( $10^5 \text{ s}^{-1}$ ), 500 hPa Height (dam), and 200 hPa Wind (kt)

Init: 12z Jun 21 2026 Forecast Hour: [132] valid at 00z Sat, Jun 27 2026

TROPICALTIDBITS.COM

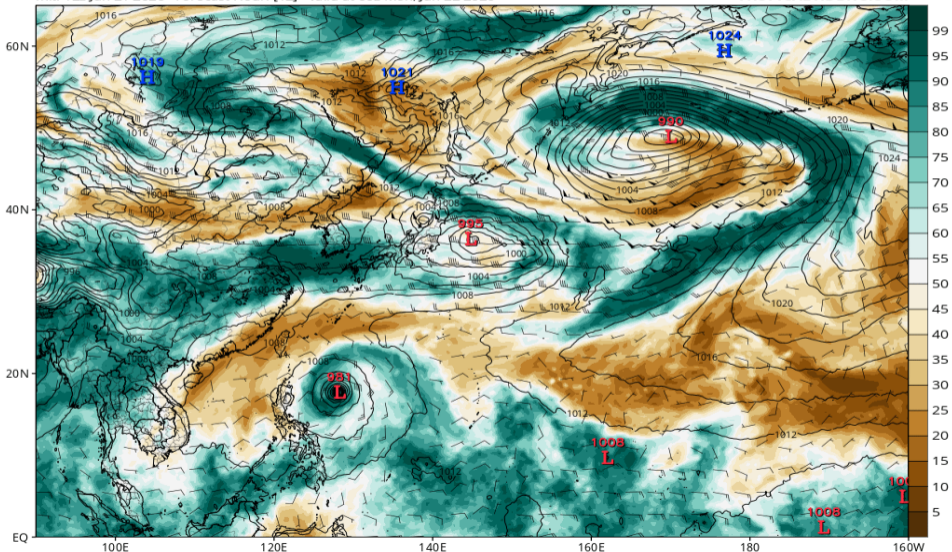


# RH700-300 (GFS 06/22 00Z 予報)

GFS MSLP (mb), 700-300 hPa Relative Humidity (%), and 700-300 hPa Wind (kt)

Init: 12z Jun 21 2026 Forecast Hour: [12] valid at 00z Mon, Jun 22 2026

TROPICALTIDBITS.COM

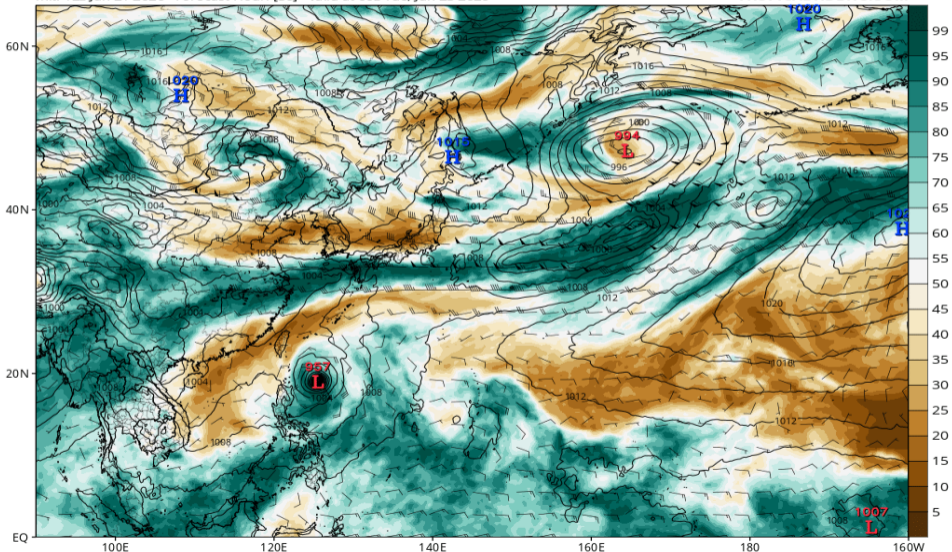


# RH700-300 (GFS 06/23 00Z 予報)

GFS MSLP (mb), 700-300 hPa Relative Humidity (%), and 700-300 hPa Wind (kt)

Init: 12z Jun 21 2026 Forecast Hour: [36] valid at 00z Tue, Jun 23 2026

TROPICALTIDBITS.COM

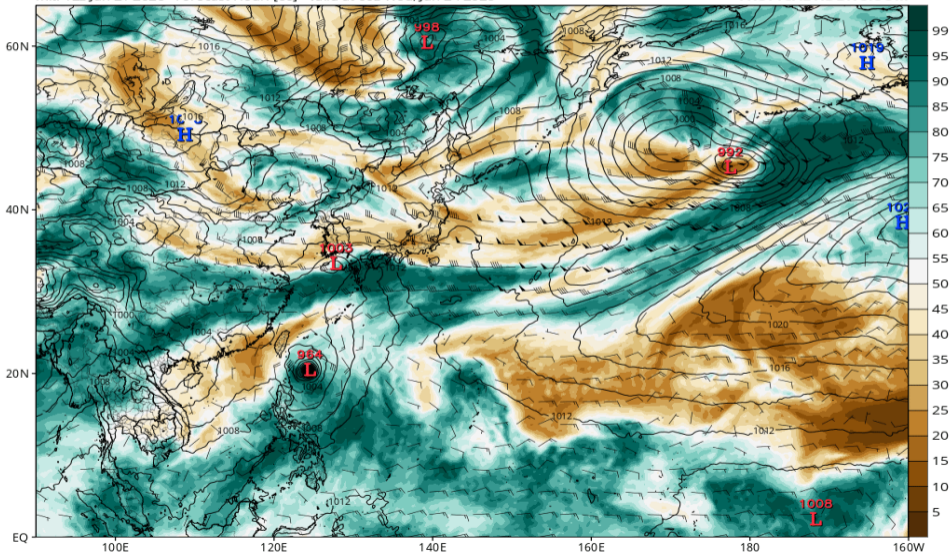


# RH700-300 (GFS 06/24 00Z 予報)

GFS MSLP (mb), 700-300 hPa Relative Humidity (%), and 700-300 hPa Wind (kt)

Init: 12z Jun 21 2026 Forecast Hour: [60] valid at 00z Wed, Jun 24 2026

TROPICALTIDBITS.COM

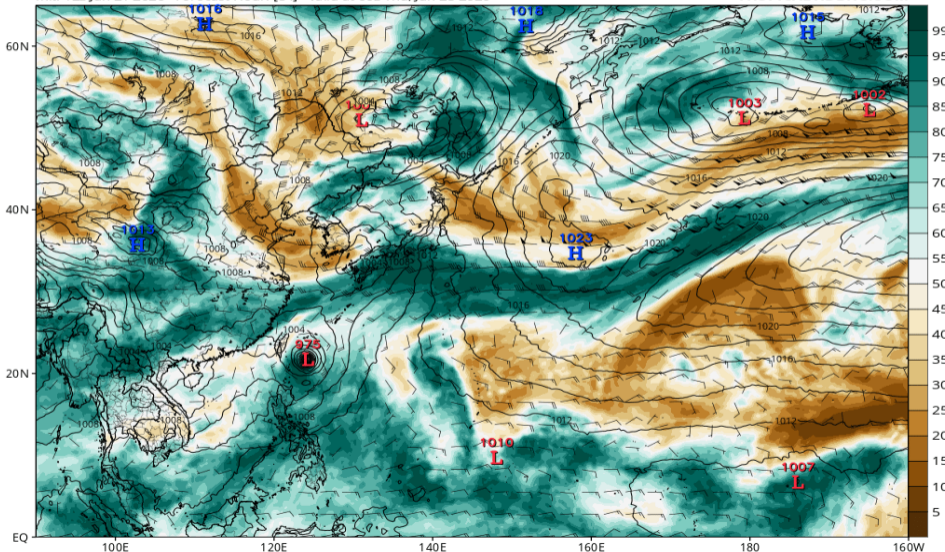


# RH700-300 (GFS 06/25 00Z 予報)

GFS MSLP (mb), 700-300 hPa Relative Humidity (%), and 700-300 hPa Wind (kt)

Init: 12z Jun 21 2026 Forecast Hour: [84] valid at 00z Thu, Jun 25 2026

TROPICALTIDBITS.COM

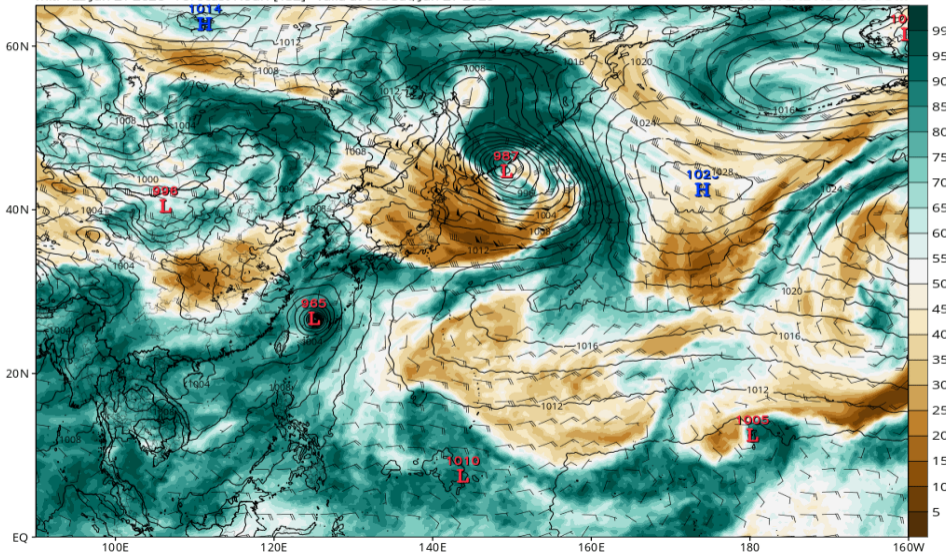


# RH700-300 (GFS 06/27 00Z 予報)

GFS MSLP (mb), 700-300 hPa Relative Humidity (%), and 700-300 hPa Wind (kt)

Init: 12z Jun 21 2026 Forecast Hour: [132] valid at 00z Sat, Jun 27 2026

TROPICALTIDBITS.COM

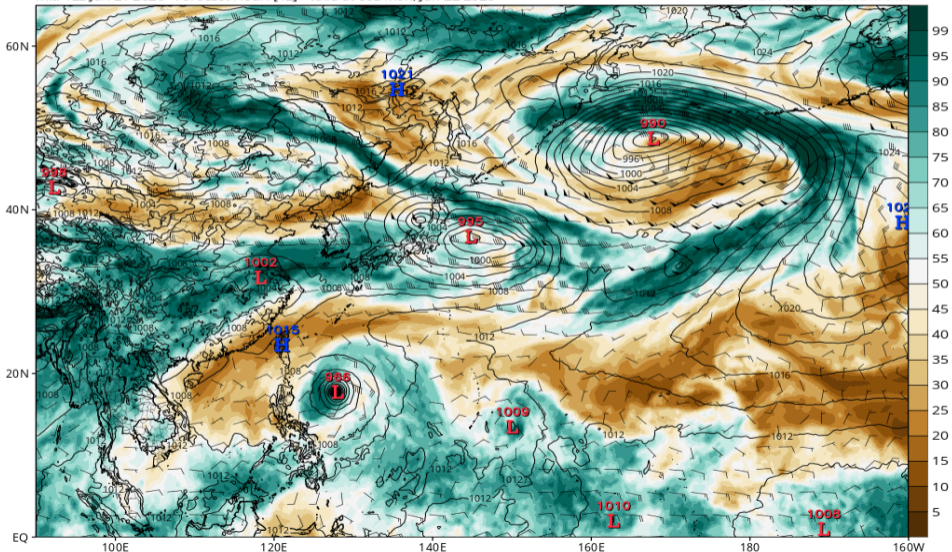


# RH700-300 (ECMWF 06/22 00Z 予報)

ECMWF MSLP (mb), 700-300 hPa Relative Humidity (%), and 700-300 hPa Wind (kt)

Init: 12z Jun 21 2026 Forecast Hour: [12] valid at 00z Mon, Jun 22 2026

TROPICALTIDBITS.COM

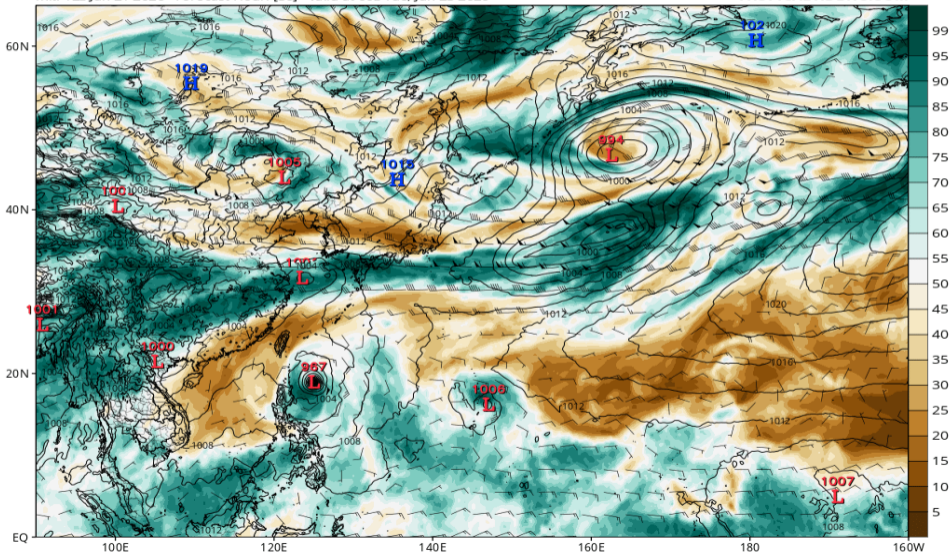


# RH700-300 (ECMWF 06/23 00Z 予報)

ECMWF MSLP (mb), 700-300 hPa Relative Humidity (%), and 700-300 hPa Wind (kt)

Init: 12z Jun 21 2026 Forecast Hour: [36] valid at 00z Tue, Jun 23 2026

TROPICALTIDBITS.COM

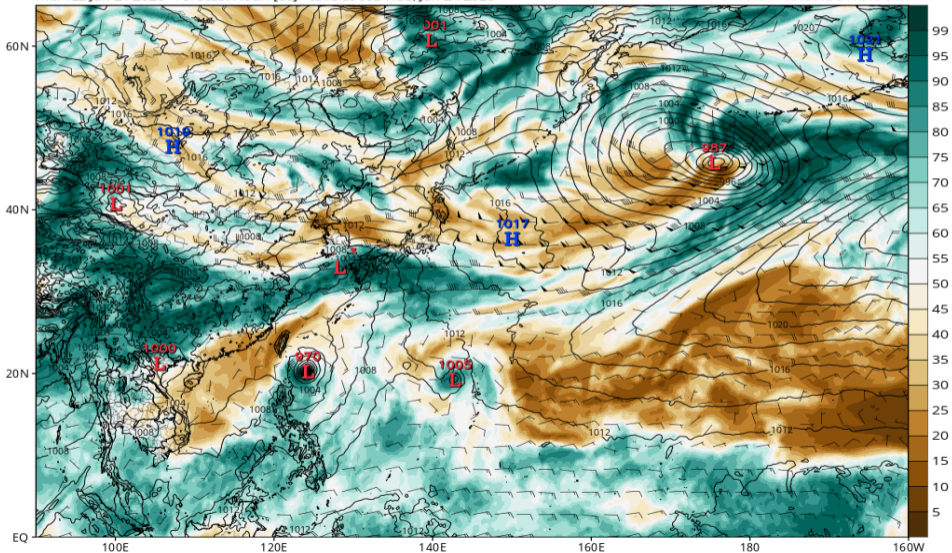


# RH700-300 (ECMWF 06/24 00Z 予報)

ECMWF MSLP (mb), 700-300 hPa Relative Humidity (%), and 700-300 hPa Wind (kt)

Init: 12z Jun 21 2026 Forecast Hour: [60] valid at 00z Wed, Jun 24 2026

TROPICALTIDBITS.COM

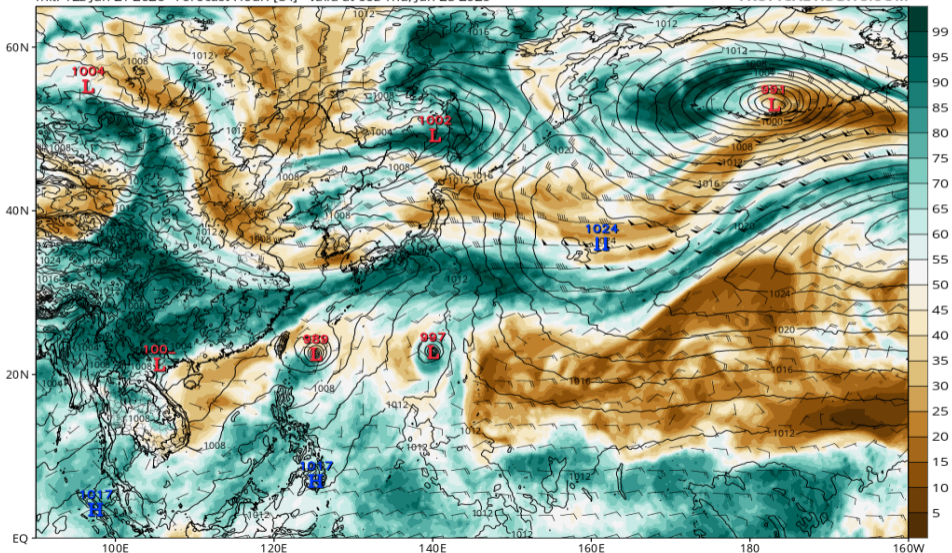


# RH700-300 (ECMWF 06/25 00Z 予報)

ECMWF MSLP (mb), 700-300 hPa Relative Humidity (%), and 700-300 hPa Wind (kt)

Init: 12z Jun 21 2026 Forecast Hour: [84] valid at 00z Thu, Jun 25 2026

TROPICALTIDBITS.COM

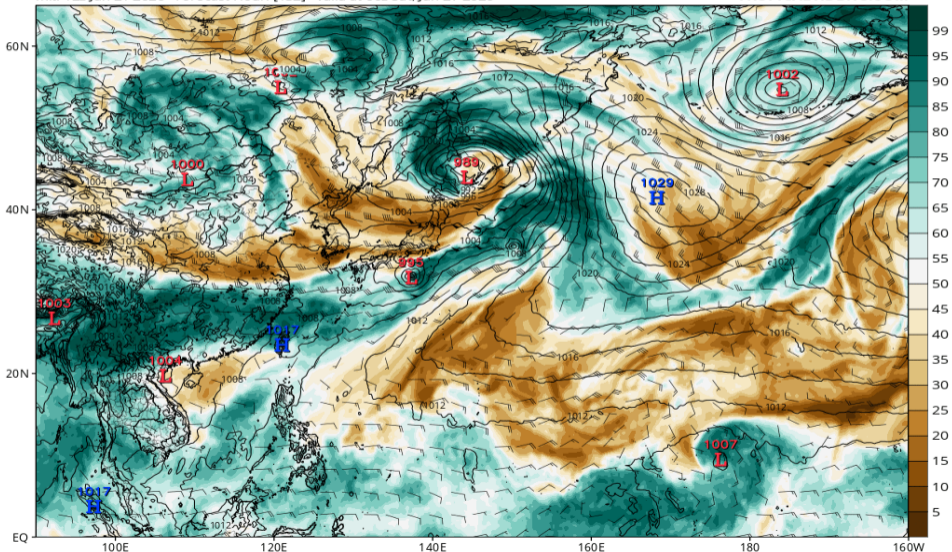


# RH700-300 (ECMWF 06/27 00Z 予報)

ECMWF MSLP (mb), 700-300 hPa Relative Humidity (%), and 700-300 hPa Wind (kt)

Init: 12z Jun 21 2026 Forecast Hour: [132] valid at 00z Sat, Jun 27 2026

TROPICALTIDBITS.COM

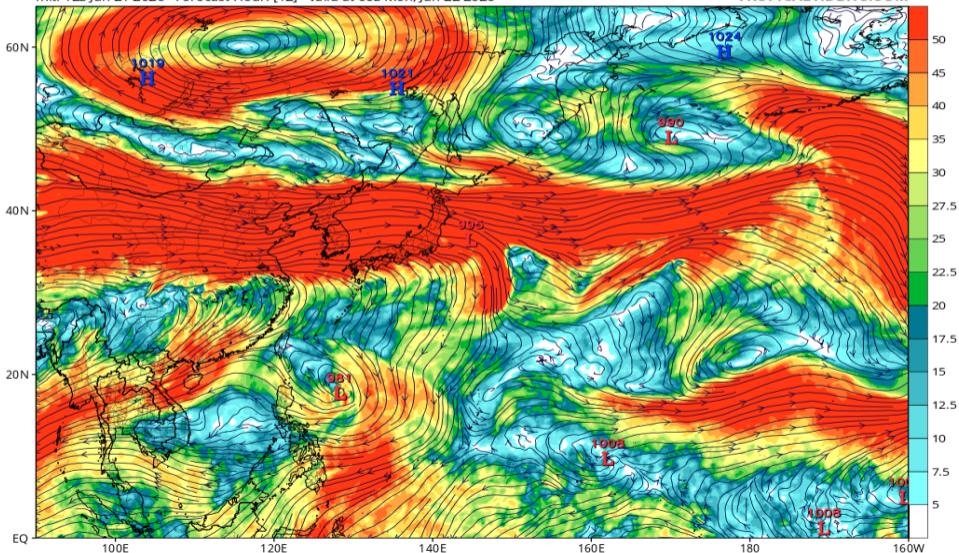


# Wshear850-200 (GFS 06/22 00Z 予報)

GFS 200mb-850mb Wind Shear (knots) & Low Centers (mb)

Init: 12z Jun 21 2026 Forecast Hour: [12] valid at 00z Mon, Jun 22 2026

TROPICALTIDBITS.COM

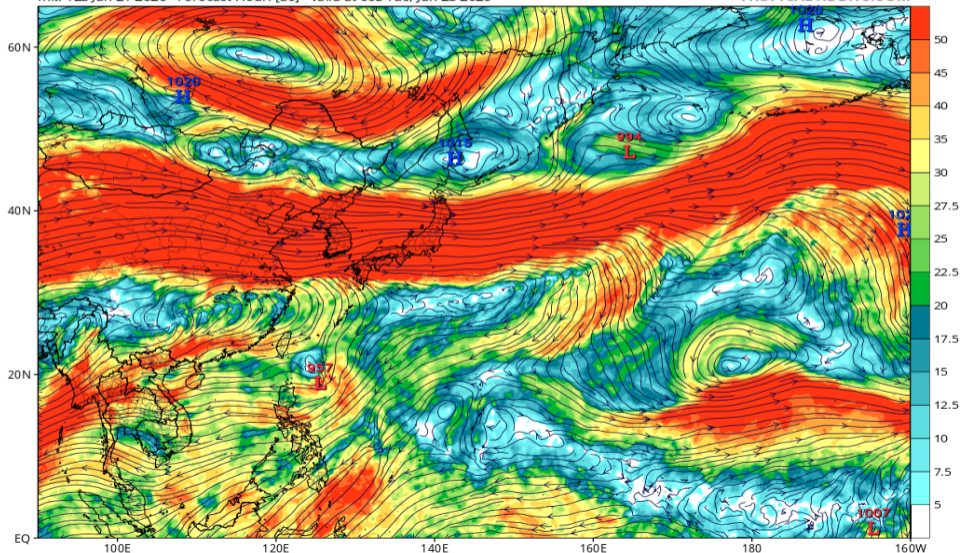


# Wshear850-200 (GFS 06/23 00Z 予報)

GFS 200mb-850mb Wind Shear (knots) & Low Centers (mb)

Init: 12z Jun 21 2026 Forecast Hour: [36] valid at 00z Tue, Jun 23 2026

TROPICALTIDBITS.COM

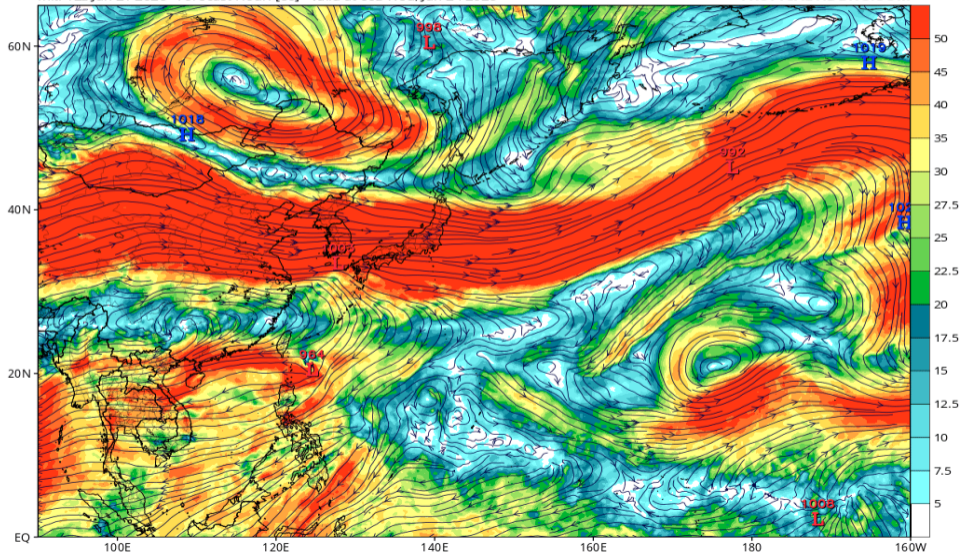


# Wshear850-200 (GFS 06/24 00Z 予報)

GFS 200mb-850mb Wind Shear (knots) & Low Centers (mb)

Init: 12z Jun 21 2026 Forecast Hour: [60] valid at 00z Wed, Jun 24 2026

TROPICALTIDBITS.COM

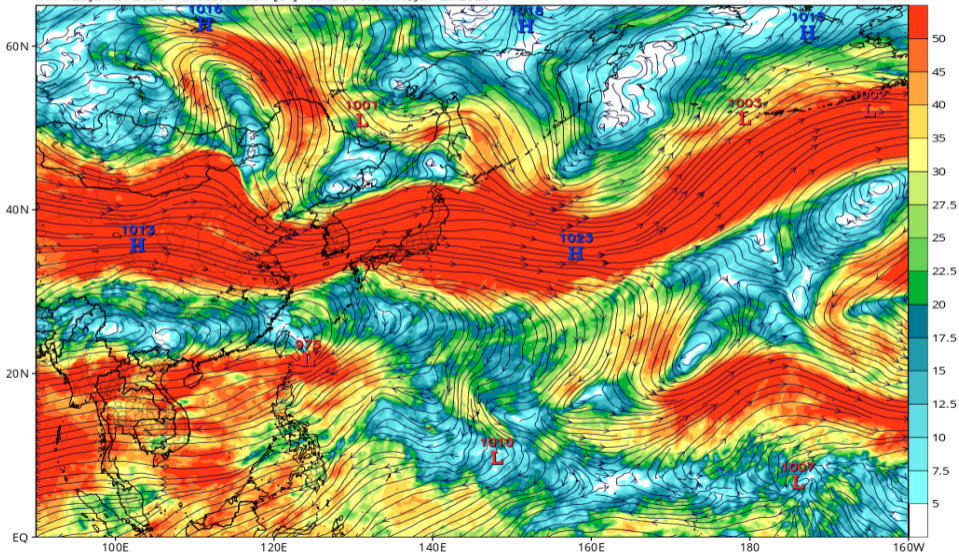


# Wshear850-200 (GFS 06/25 00Z 予報)

GFS 200mb-850mb Wind Shear (knots) & Low Centers (mb)

Init: 12z Jun 21 2026 Forecast Hour: [84] valid at 00z Thu, Jun 25 2026

TROPICALTIDBITS.COM

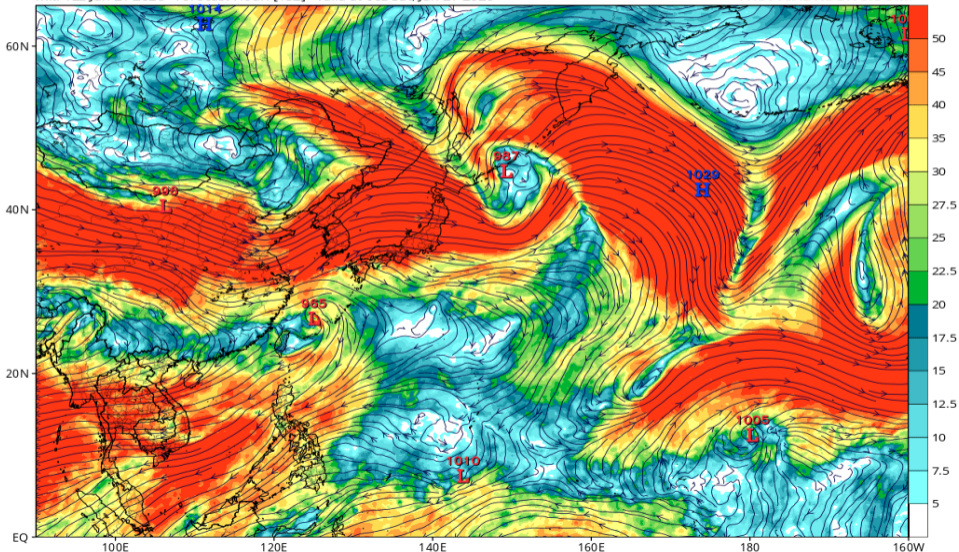


# Wshear850-200 (GFS 06/27 00Z 予報)

GFS 200mb-850mb Wind Shear (knots) & Low Centers (mb)

Init: 12z Jun 21 2026 Forecast Hour: [132] valid at 00z Sat, Jun 27 2026

TROPICALTIDBITS.COM

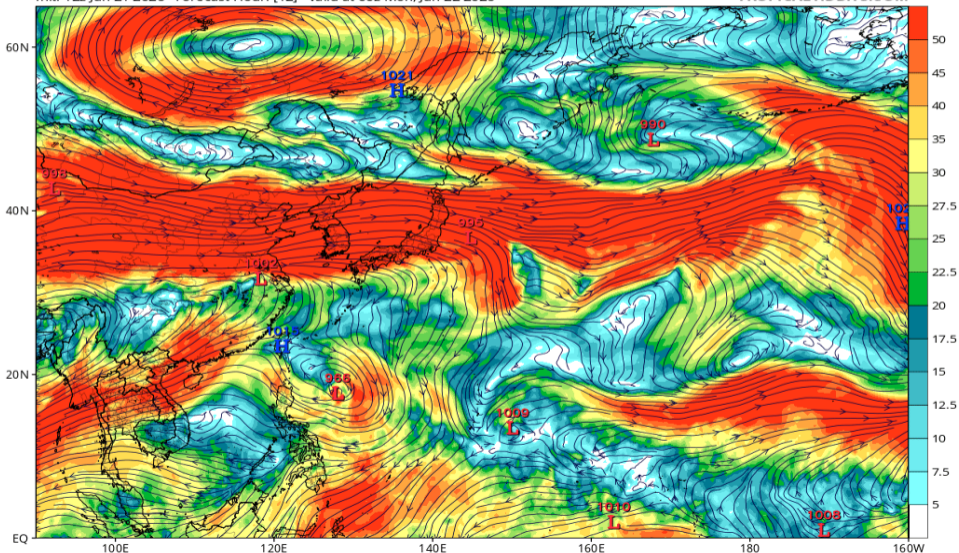


# Wshear850-200 (ECMWF 06/22 00Z 予報)

ECMWF 200mb-850mb Wind Shear (knots) & Low Centers (mb)

Init: 12z Jun 21 2026 Forecast Hour: [12] valid at 00z Mon, Jun 22 2026

TROPICALTIDBITS.COM

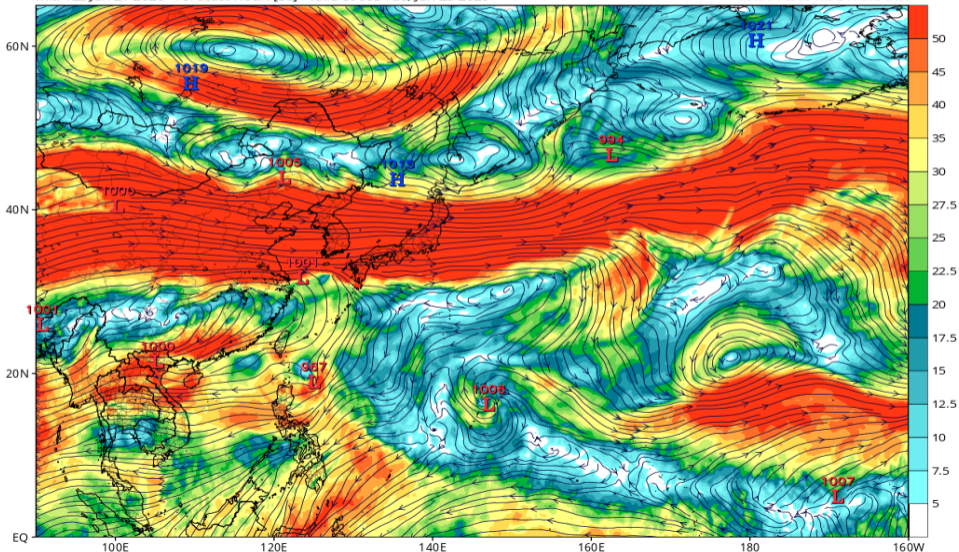


# Wshear850-200 (ECMWF 06/23 00Z 予報)

ECMWF 200mb-850mb Wind Shear (knots) & Low Centers (mb)

Init: 12z Jun 21 2026 Forecast Hour: [36] valid at 00z Tue, Jun 23 2026

TROPICALTIDBITS.COM

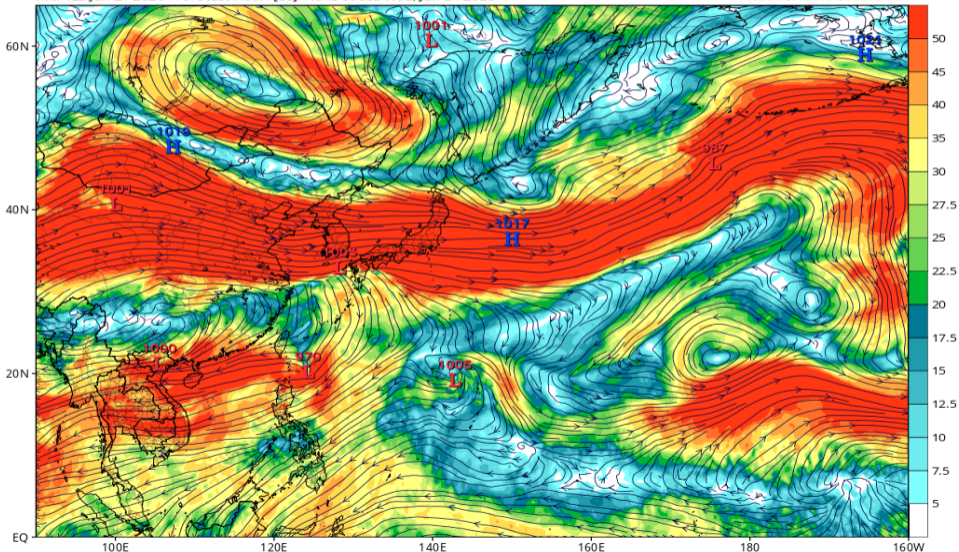


# Wshear850-200 (ECMWF 06/24 00Z 予報)

ECMWF 200mb-850mb Wind Shear (knots) & Low Centers (mb)

Init: 12z Jun 21 2026 Forecast Hour: [60] valid at 00z Wed, Jun 24 2026

TROPICALTIDBITS.COM

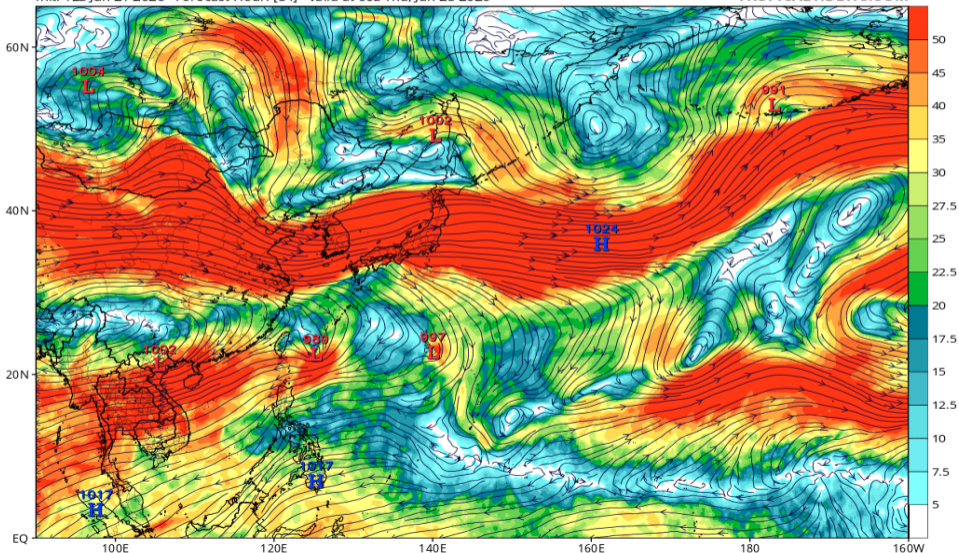


# Wshear850-200 (ECMWF 06/25 00Z 予報)

ECMWF 200mb-850mb Wind Shear (knots) & Low Centers (mb)

Init: 12z Jun 21 2026 Forecast Hour: [84] valid at 00z Thu, Jun 25 2026

TROPICALTIDBITS.COM

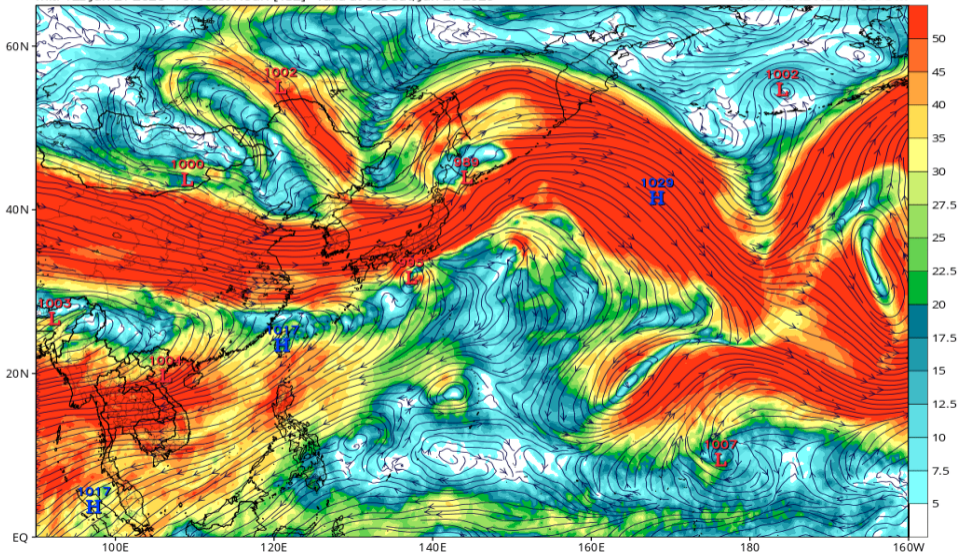


# Wshear850-200 (ECMWF 06/27 00Z 予報)

ECMWF 200mb-850mb Wind Shear (knots) & Low Centers (mb)

Init: 12z Jun 21 2026 Forecast Hour: [132] valid at 00z Sat, Jun 27 2026

TROPICALTIDBITS.COM

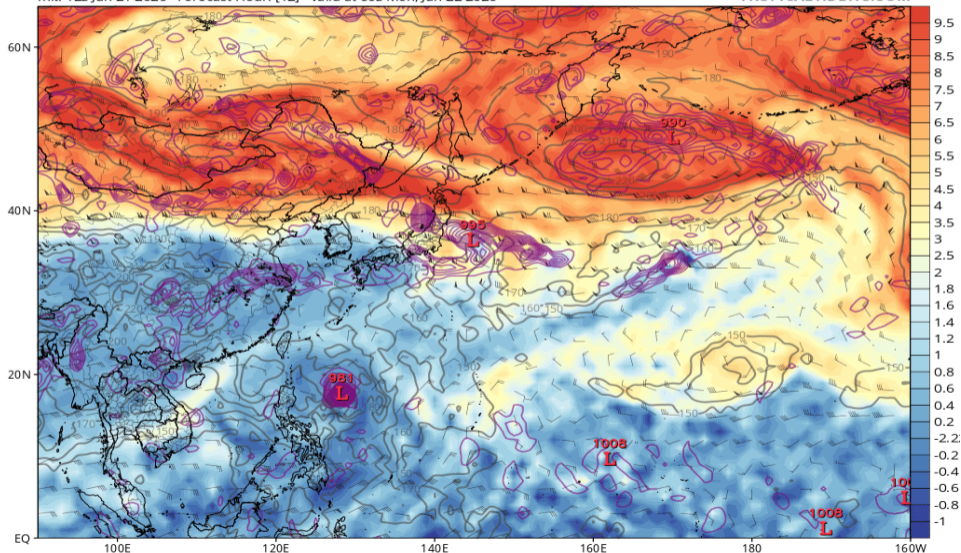


# 渦位 355K (GFS 06/22 00Z 予報)

GFS 355K Cyclonic PV (PVU), Wind (kt), Pressure (hPa, gray), & 850 hPa Cyclonic Vorticity (purple) [1.0°x1.0° grid]

Init: 12z Jun 21 2026 Forecast Hour: [12] valid at 00z Mon, Jun 22 2026

TROPICALTIDBITS.COM

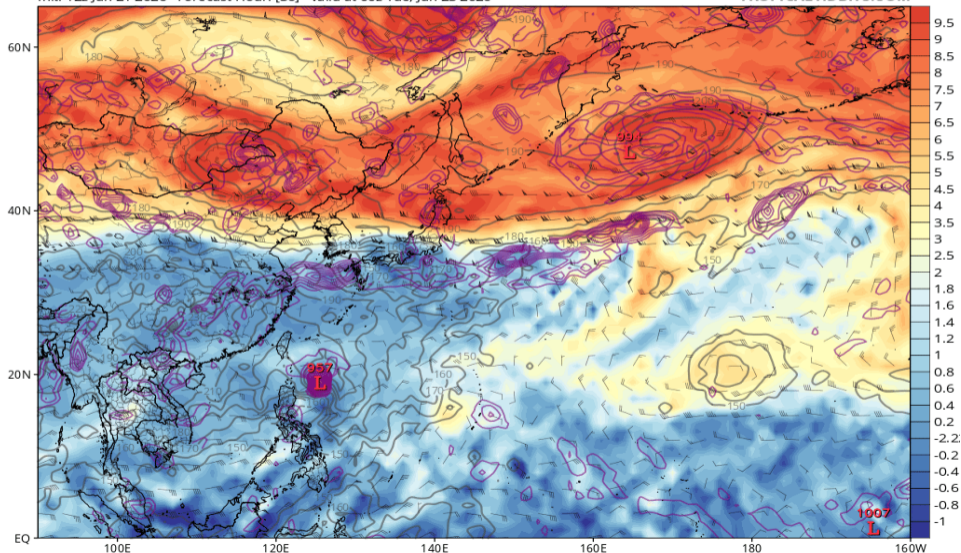


# 渦位 355K (GFS 06/23 00Z 予報)

GFS 355K Cyclonic PV (PVU), Wind (kt), Pressure (hPa, gray), & 850 hPa Cyclonic Vorticity (purple) [1.0°x1.0° grid]

Init: 12z Jun 21 2026 Forecast Hour: [36] valid at 00z Tue, Jun 23 2026

TROPICALTIDBITS.COM

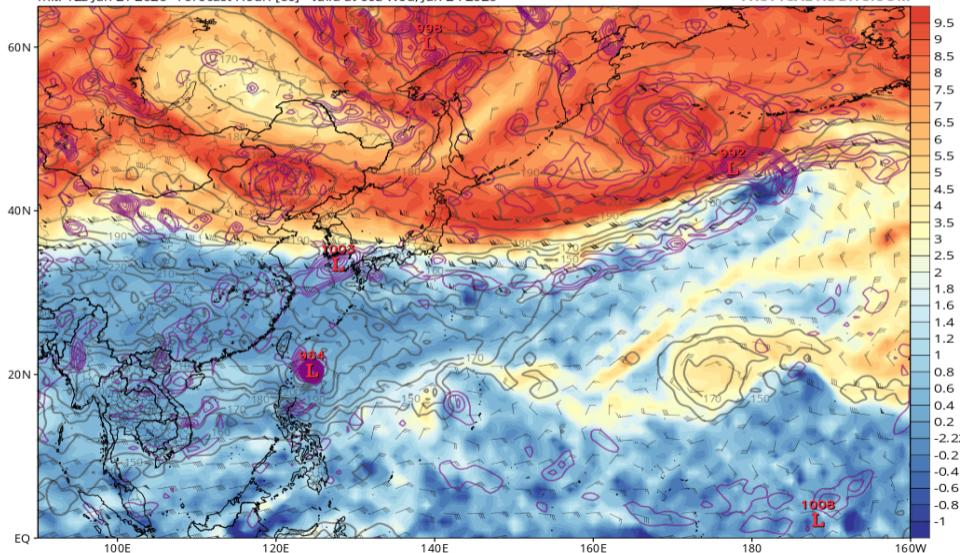


# 渦位 355K (GFS 06/24 00Z 予報)

GFS 355K Cyclonic PV (PVU), Wind (kt), Pressure (hPa, gray), & 850 hPa Cyclonic Vorticity (purple) [1.0°x1.0° grid]

Init: 12z Jun 21 2026 Forecast Hour: [60] valid at 00z Wed, Jun 24 2026

TROPICALTIDBITS.COM

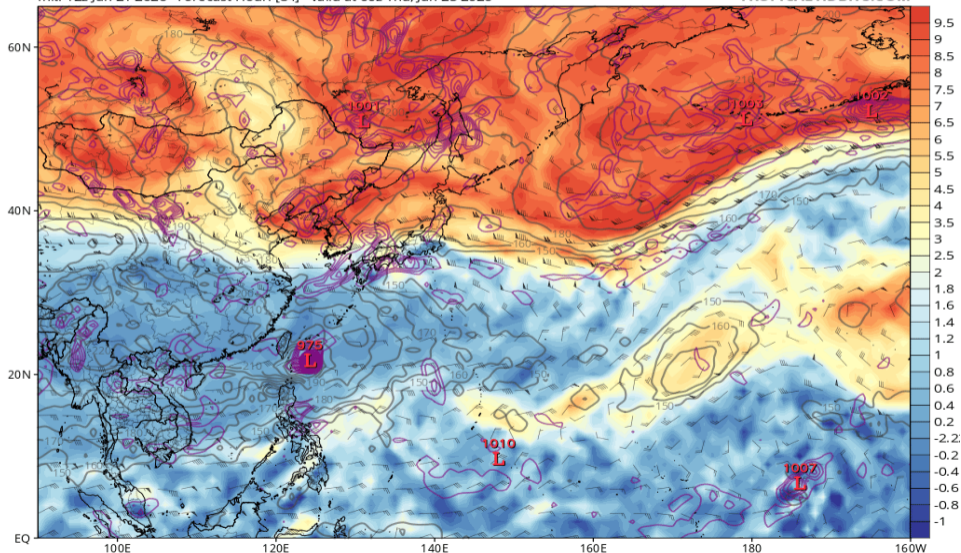


# 渦位 355K (GFS 06/25 00Z 予報)

GFS 355K Cyclonic PV (PVU), Wind (kt), Pressure (hPa, gray), & 850 hPa Cyclonic Vorticity (purple) [1.0°x1.0° grid]

Init: 12z Jun 21 2026 Forecast Hour: [84] valid at 00z Thu, Jun 25 2026

TROPICALTIDBITS.COM

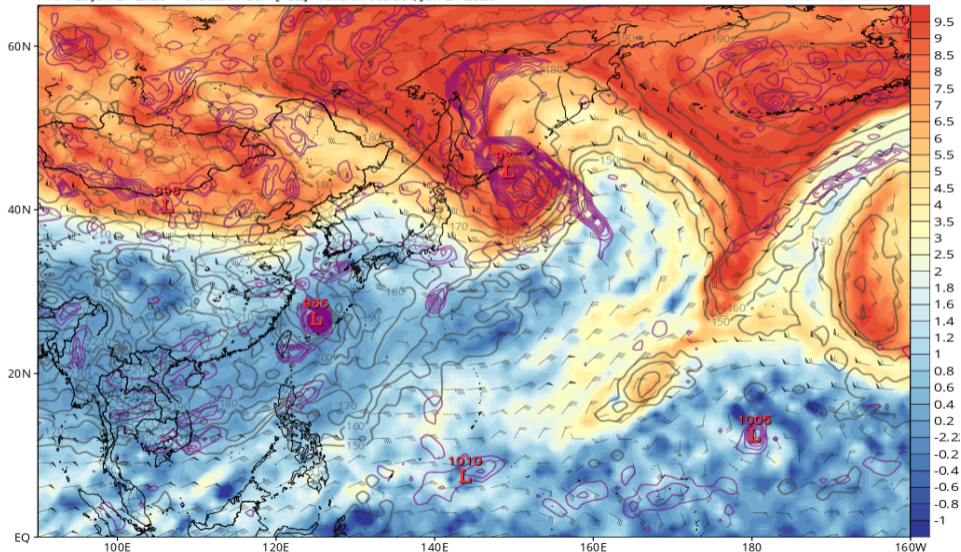


# 渦位 355K (GFS 06/27 00Z 予報)

GFS 355K Cyclonic PV (PVU), Wind (kt), Pressure (hPa, gray), & 850 hPa Cyclonic Vorticity (purple) [1.0°x1.0° grid]

Init: 12z Jun 21 2026 Forecast Hour: [132] valid at 00z Sat, Jun 27 2026

TROPICALTIDBITS.COM



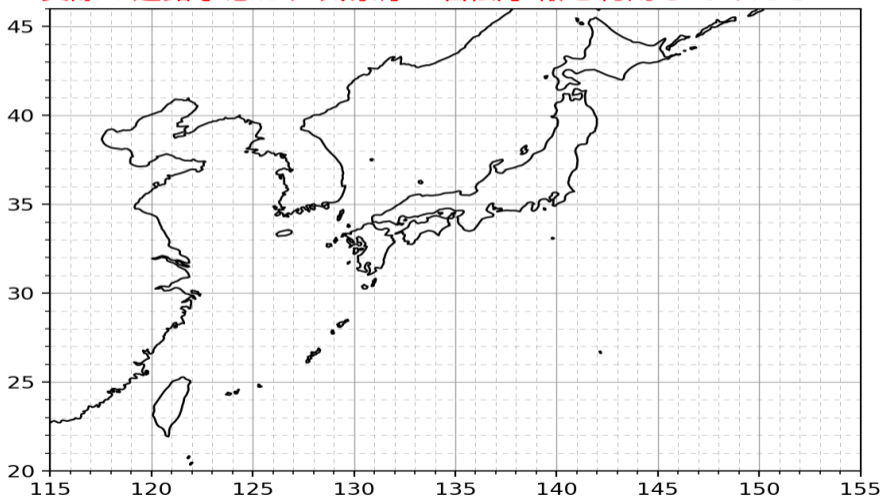
# GrandEns (IFS/AIFS/GFS/AIGFS/GSM 06/22 00Z 予報)

Grand Ensemble

weather-models.info | ECMWF Open Data (CC BY 4.0),  
NOAA data, 気象庁データ (ウェザーマップ社提供)

Init: 2026/06/21 18Z FT: 006h Valid: 2026/06/22 00Z

実際の進路予想は、気象庁の台風予報を利用してください



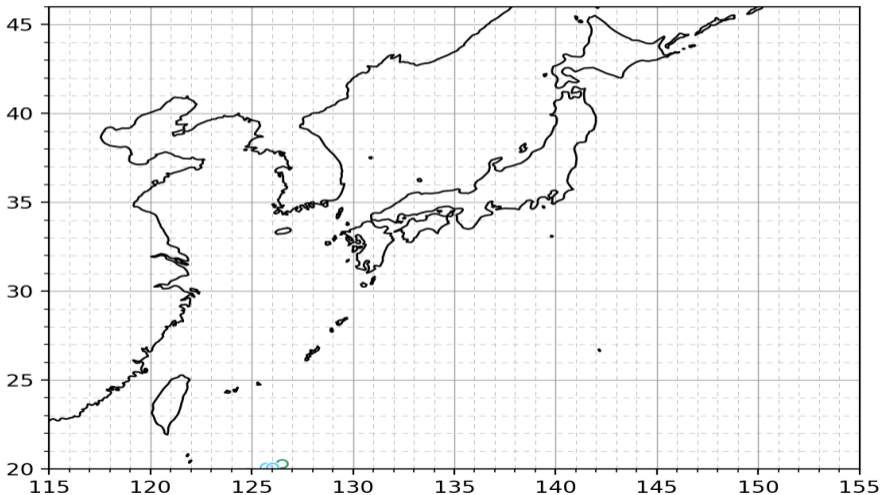
# GrandEns (IFS/AIFS/GFS/AIGFS/GSM 06/23 00Z 予報)

Grand Ensemble

weather-models.info | ECMWF Open Data (CC BY 4.0),  
NOAA data, 気象庁データ (ウェザーマップ社提供)

Init: 2026/06/21 18Z FT: 030h Valid: 2026/06/23 00Z

実際の進路予想は、気象庁の台風予報を利用してください



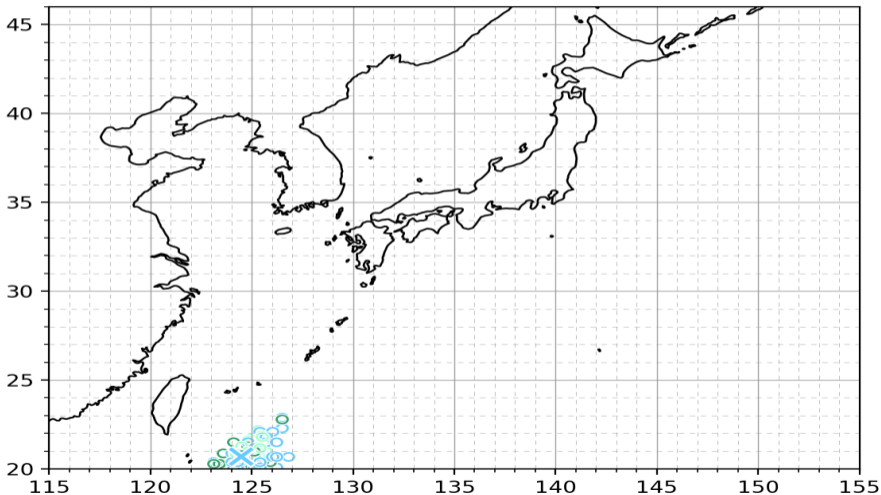
# GrandEns (IFS/AIFS/GFS/AIGFS/GSM 06/24 00Z 予報)

Grand Ensemble

weather-models.info | ECMWF Open Data (CC BY 4.0),  
NOAA data, 気象庁データ (ウェザーマップ社提供)

Init: 2026/06/21 18Z FT: 054h Valid: 2026/06/24 00Z

実際の進路予想は、気象庁の台風予報を利用してください



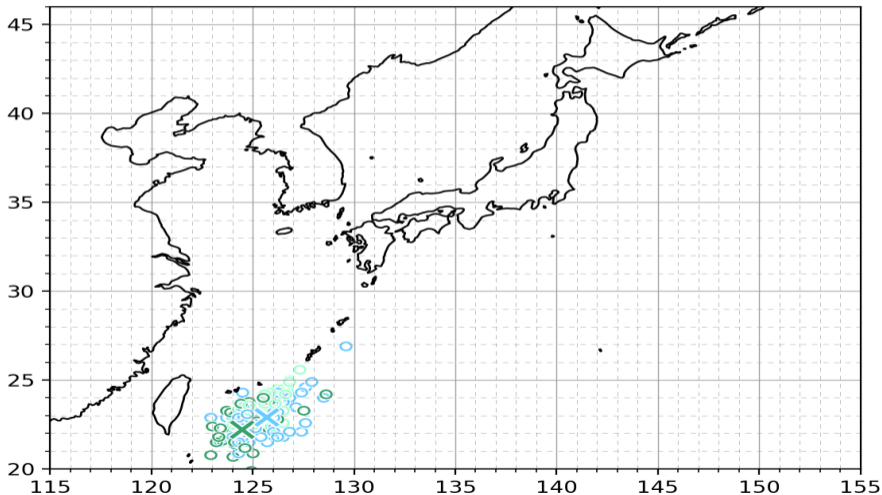
# GrandEns (IFS/AIFS/GFS/AIGFS/GSM 06/25 00Z 予報)

Grand Ensemble

weather-models.info | ECMWF Open Data (CC BY 4.0),  
NOAA data, 気象庁データ (ウェザーマップ社提供)

Init: 2026/06/21 18Z FT: 078h Valid: 2026/06/25 00Z

実際の進路予想は、気象庁の台風予報を利用してください



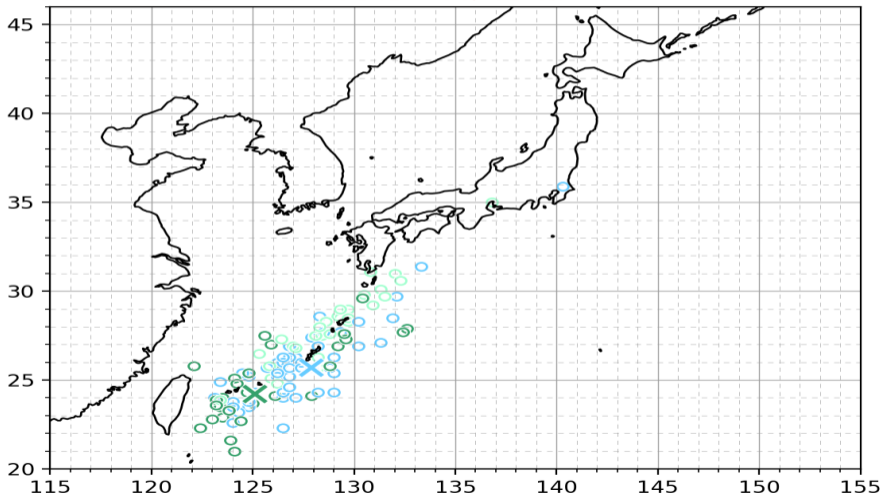
# GrandEns (IFS/AIFS/GFS/AIGFS/GSM 06/26 00Z 予報)

Grand Ensemble

weather-models.info | ECMWF Open Data (CC BY 4.0),  
NOAA data, 気象庁データ (ウェザーマップ社提供)

Init: 2026/06/21 18Z FT: 102h Valid: 2026/06/26 00Z

実際の進路予想は、気象庁の台風予報を利用してください



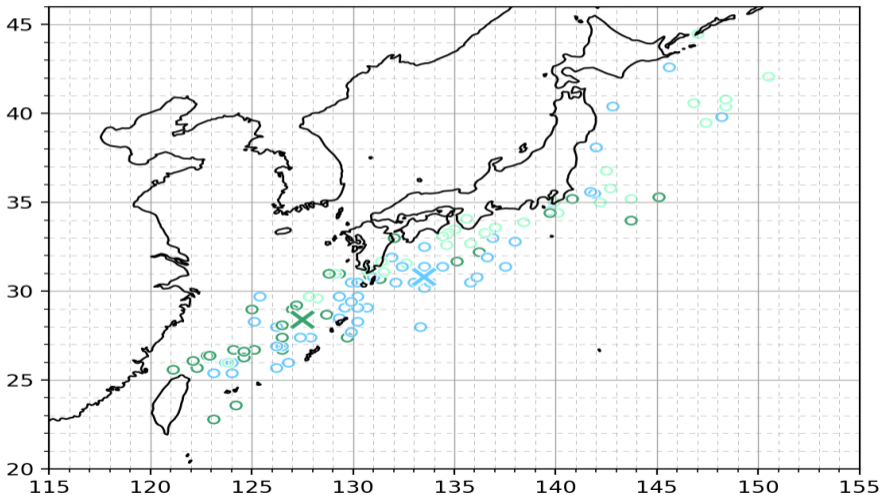
# GrandEns (IFS/AIFS/GFS/AIGFS/GSM 06/27 00Z 予報)

Grand Ensemble

weather-models.info | ECMWF Open Data (CC BY 4.0),  
NOAA data, 気象庁データ (ウェザーマップ社提供)

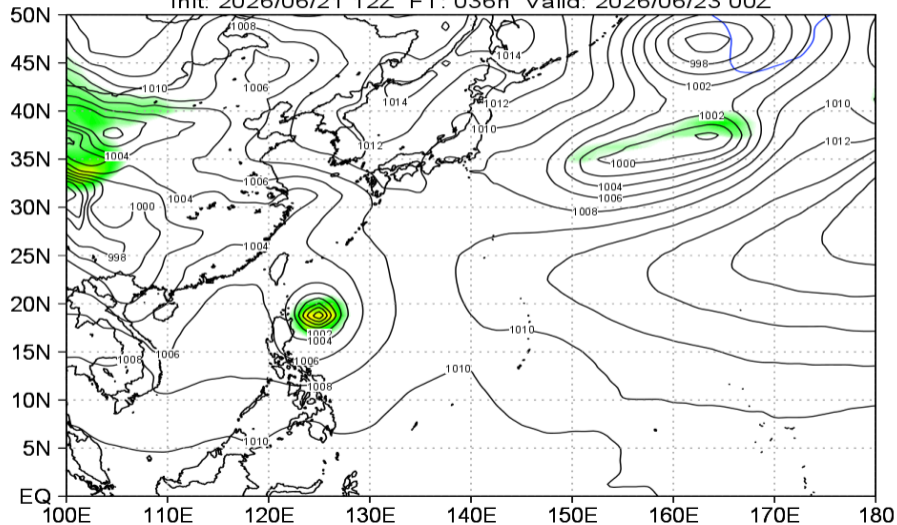
Init: 2026/06/21 18Z FT: 126h Valid: 2026/06/27 00Z

実際の進路予想は、気象庁の台風予報を利用してください



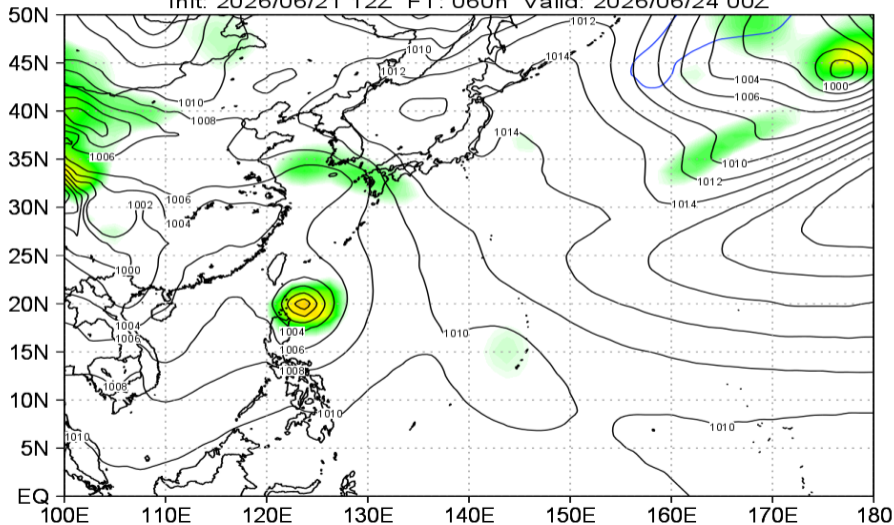
# 地上気圧 (GSMens 06/23 00Z 予報)

JMA GEPS MSLP (hPa) Mean&Spread  
Init: 2026/06/21 12Z FT: 036h Valid: 2026/06/23 00Z



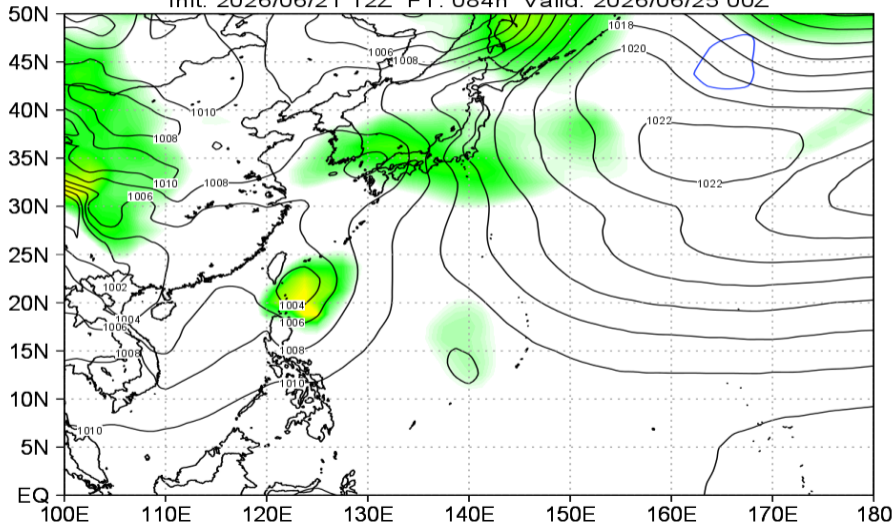
# 地上気圧 (GSMens 06/24 00Z 予報)

JMA GEPS MSLP (hPa) Mean&Spread  
Init: 2026/06/21 12Z FT: 060h Valid: 2026/06/24 00Z



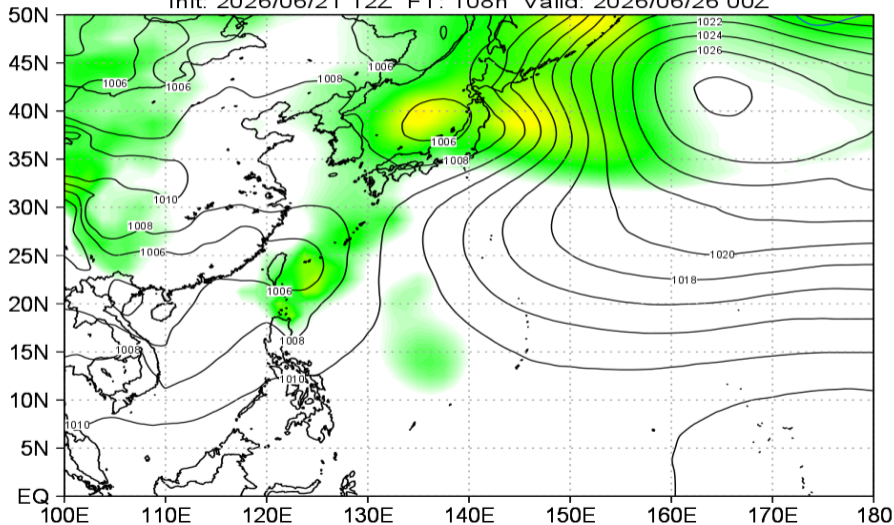
# 地上気圧 (GSMens 06/25 00Z 予報)

JMA GEPS MSLP (hPa) Mean&Spread  
Init: 2026/06/21 12Z FT: 084h Valid: 2026/06/25 00Z



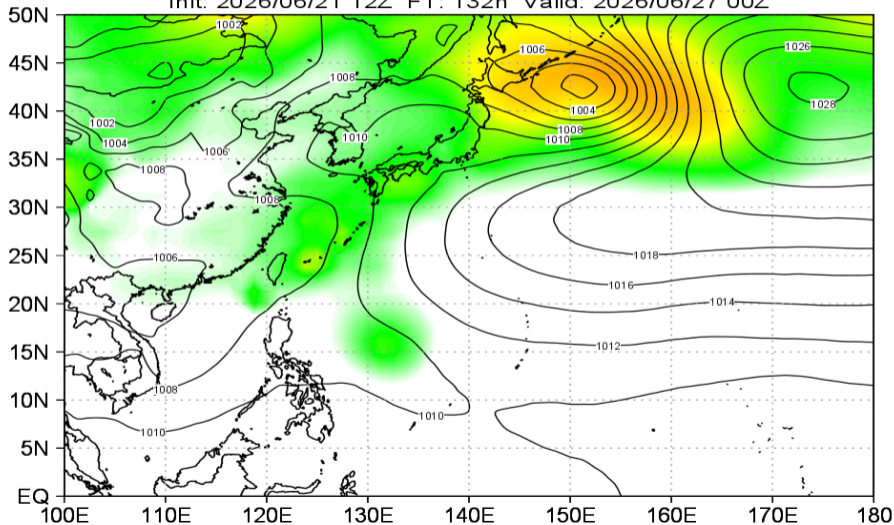
# 地上気圧 (GSMens 06/26 00Z 予報)

JMA GEPS MSLP (hPa) Mean&Spread  
Init: 2026/06/21 12Z FT: 108h Valid: 2026/06/26 00Z



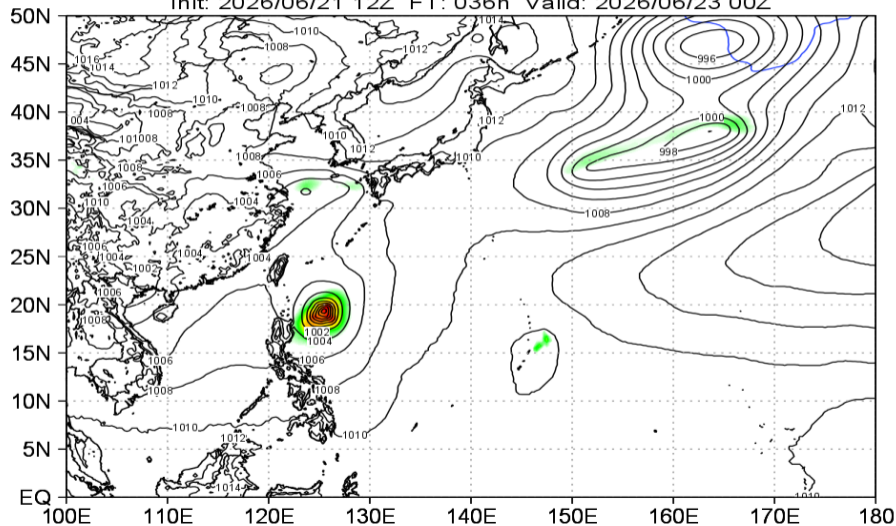
# 地上気圧 (GSMens 06/27 00Z 予報)

JMA GEPS MSLP (hPa) Mean&Spread  
Init: 2026/06/21 12Z FT: 132h Valid: 2026/06/27 00Z



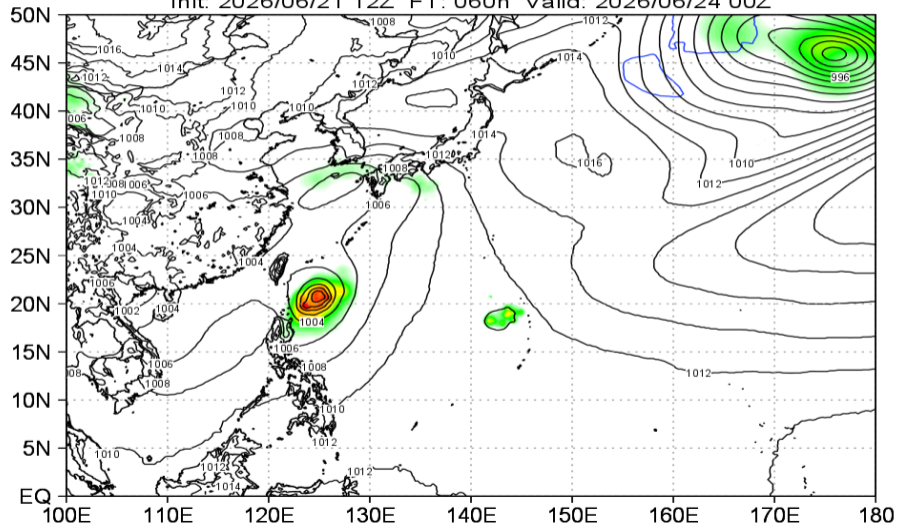
# 地上気圧 (IFSens 06/23 00Z 予報)

ECMWF IFS ENS MSLP (hPa) Mean&Spread  
Init: 2026/06/21 12Z FT: 036h Valid: 2026/06/23 00Z



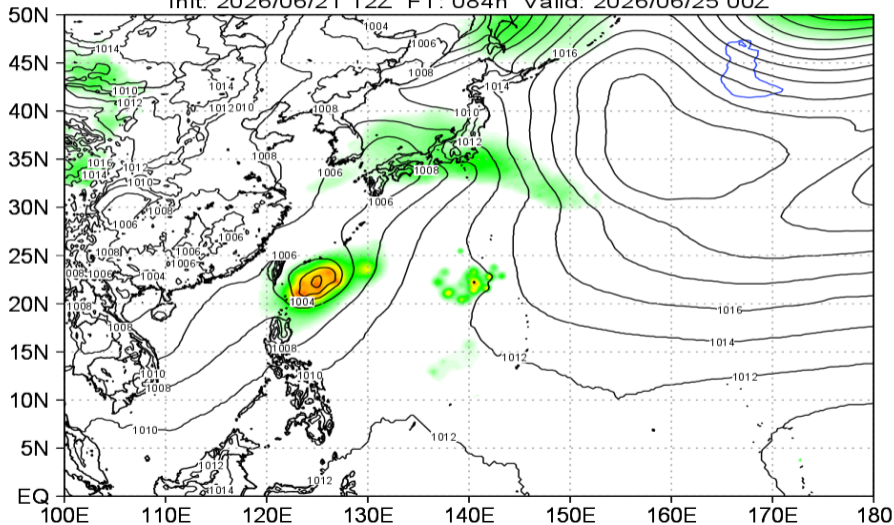
# 地上気圧 (IFSens 06/24 00Z 予報)

ECMWF IFS ENS MSLP (hPa) Mean&Spread  
Init: 2026/06/21 12Z FT: 060h Valid: 2026/06/24 00Z

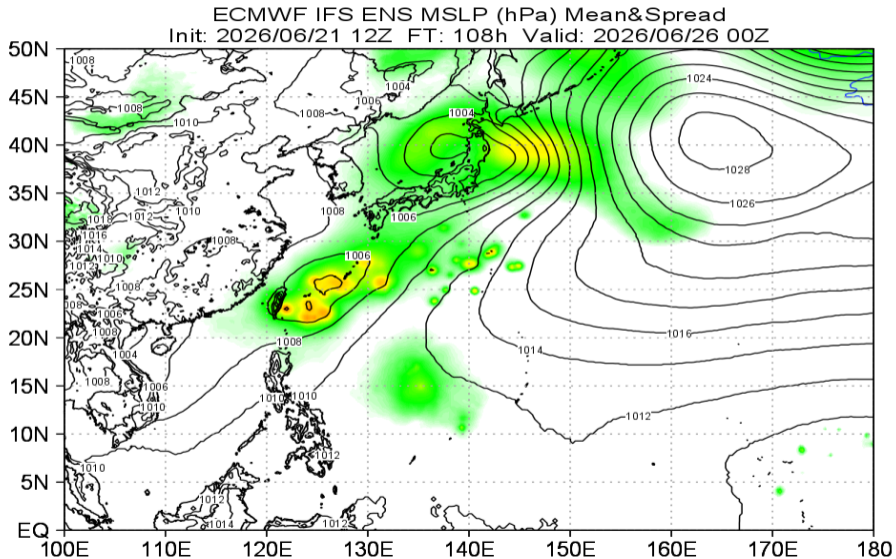


# 地上気圧 (IFSens 06/25 00Z 予報)

ECMWF IFS ENS MSLP (hPa) Mean&Spread  
Init: 2026/06/21 12Z FT: 084h Valid: 2026/06/25 00Z

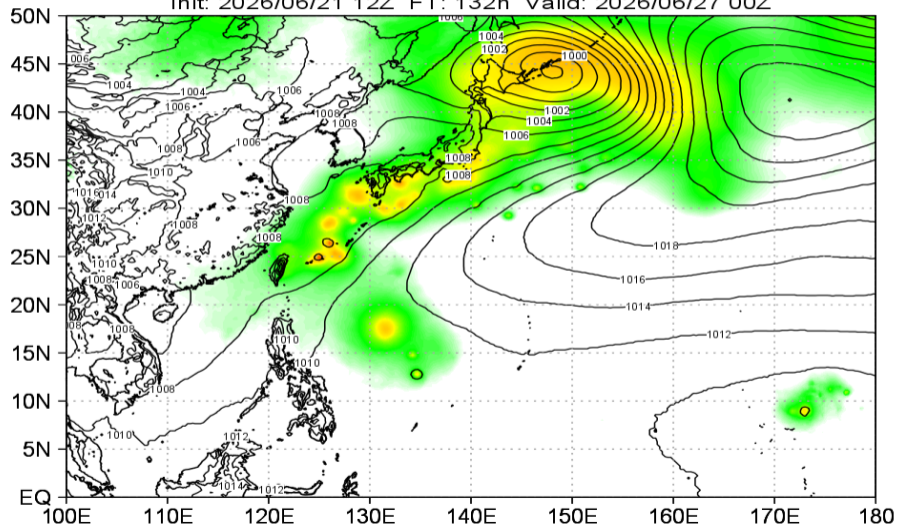


# 地上気圧 (IFSens 06/26 00Z 予報)



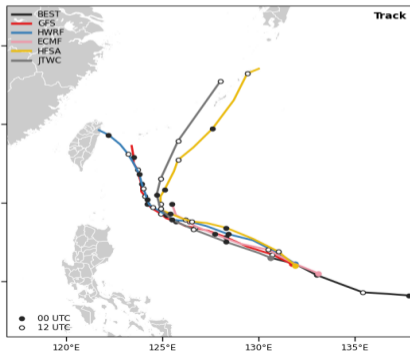
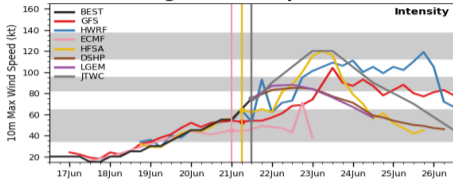
# 地上気圧 (IFSens 06/27 00Z 予報)

ECMWF IFS ENS MSLP (hPa) Mean&Spread  
Init: 2026/06/21 12Z FT: 132h Valid: 2026/06/27 00Z

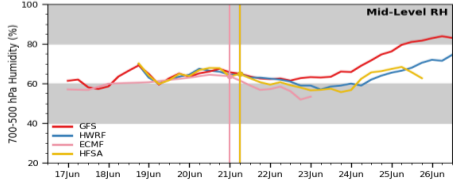
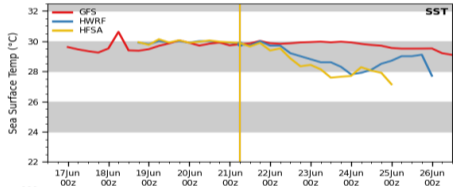
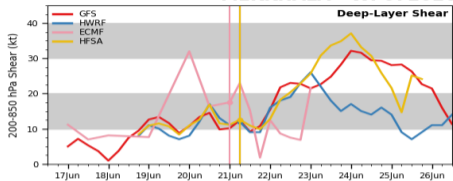


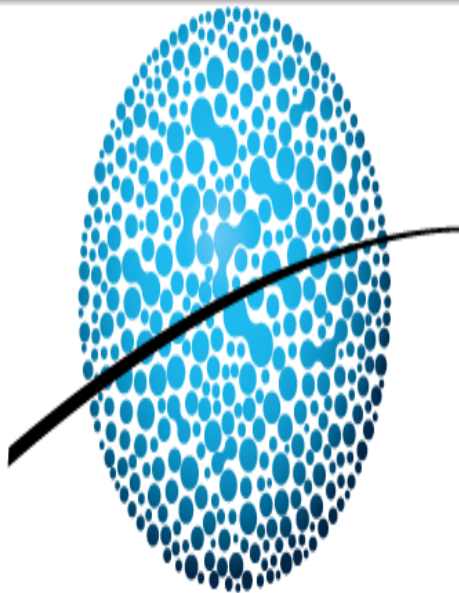
# 決定論マルチモデル予報 07W (06/21 12Z 初期値)

## Multi-Model Diagnostic Comparison



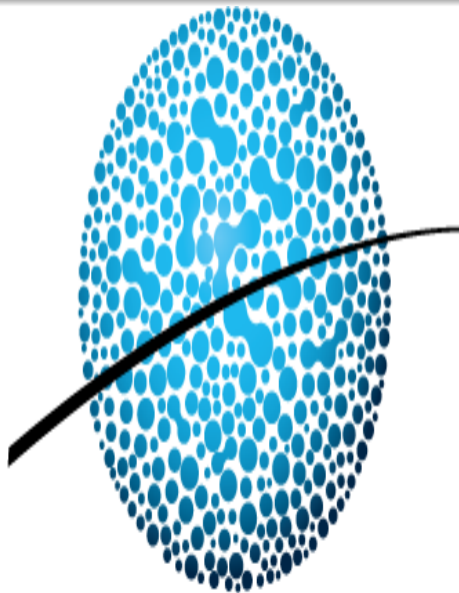
## MEKKHALA - WP072026





APCC

아시아·태평양경제협력체 기후센터



APCC

아시아·태평양경제협력체 기후센터