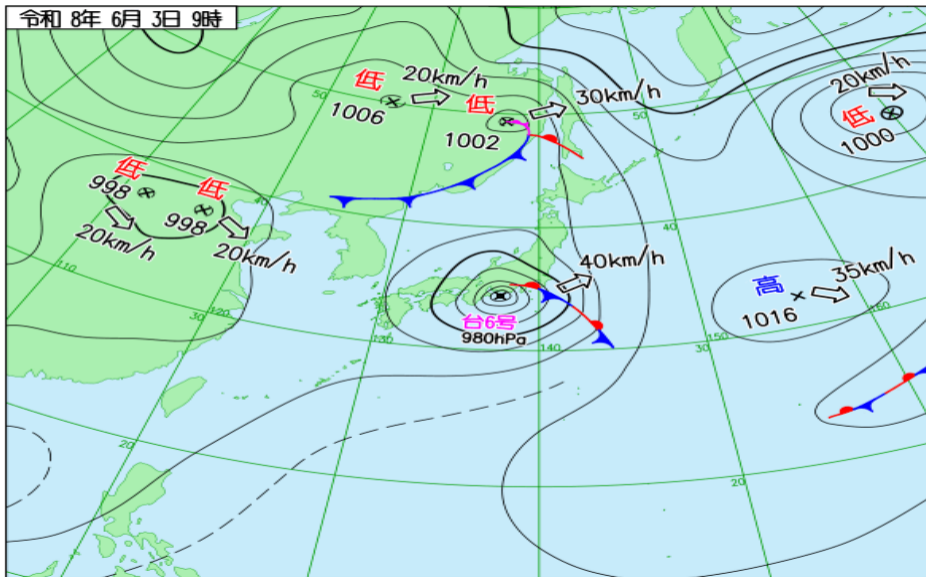
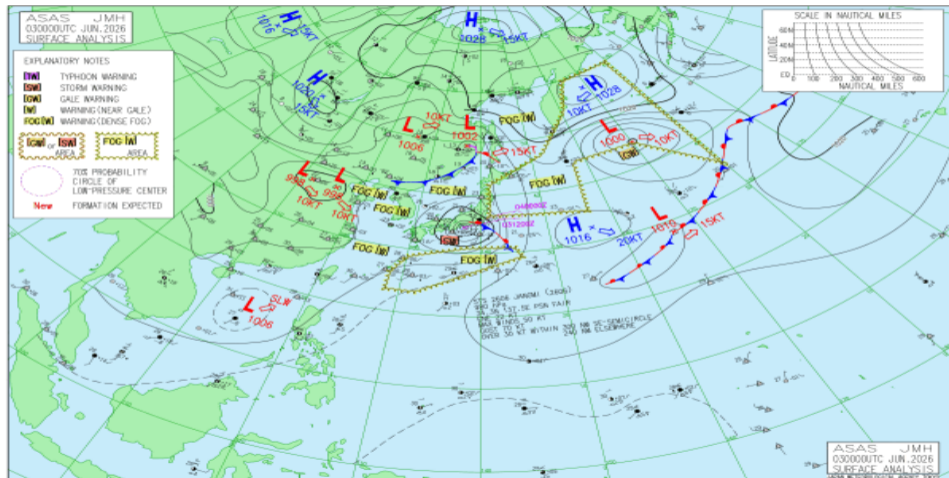


JMA 日本域実況天気図 06/03 00Z

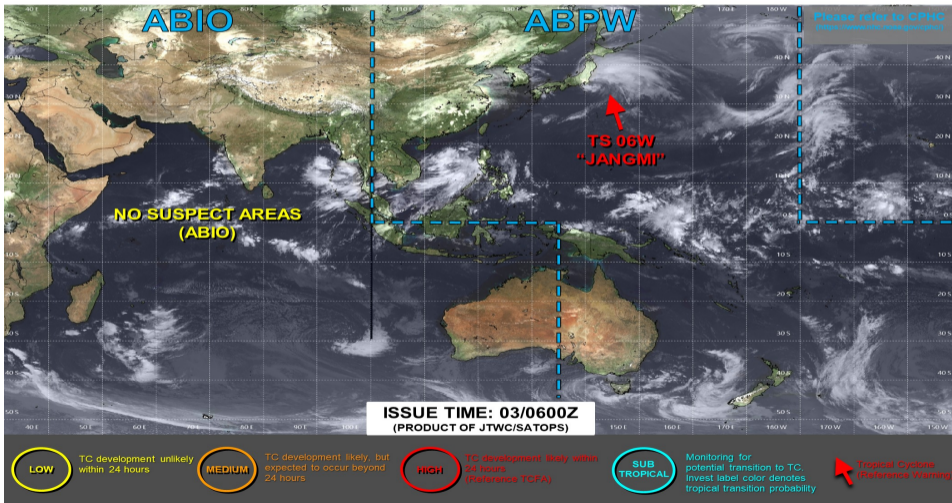


JMA アジア太平洋域実況天気図 06/03 00Z

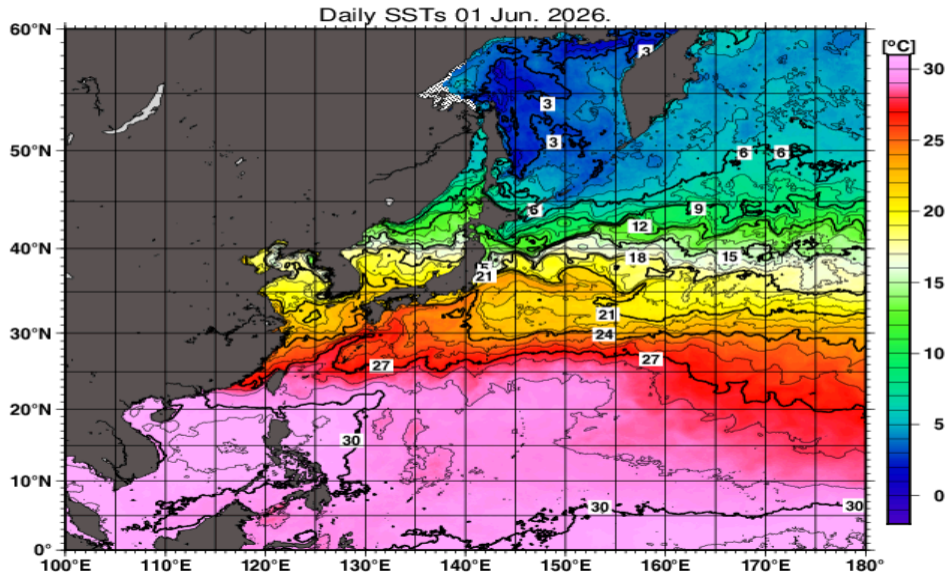




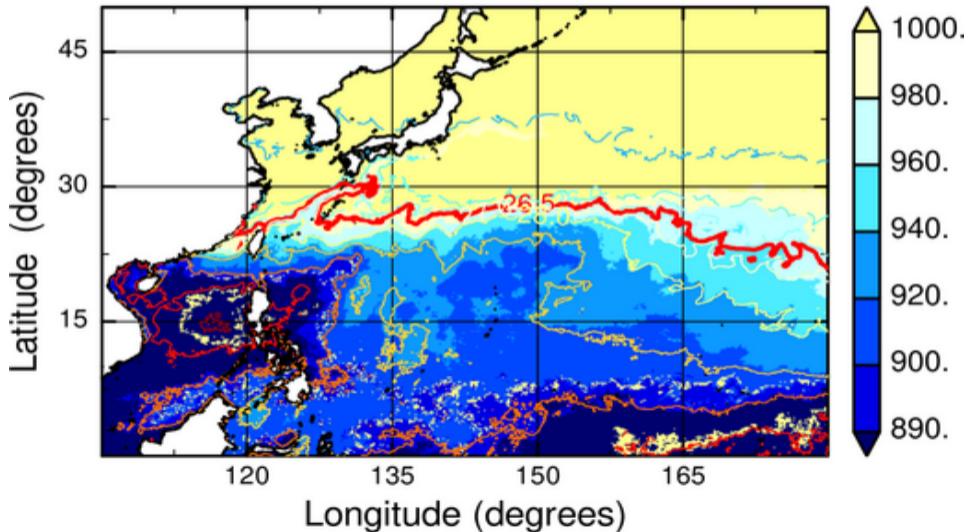
JOINT TYPHOON WARNING CENTER



JMA 海面水温解析



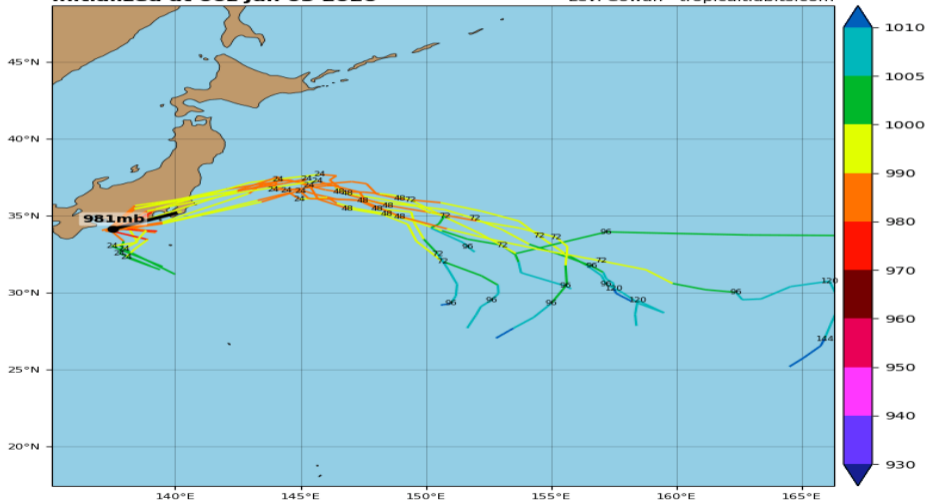
MPI_{BE}, JMAGSM+HIMSST (mb) (00:00:00Z01Jun2026)



06W JANGMI - GEFS Tracks and Min. MSLP (hPa)

Initialized at 00z Jun 03 2026

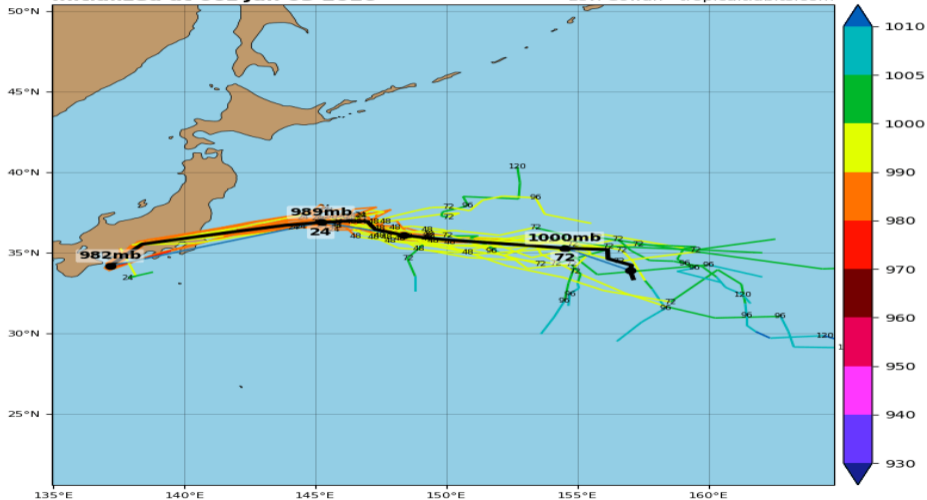
Levi Cowan - tropicaltidbits.com



06W JANGMI - GEPS Tracks and Min. MSLP (hPa)

Initialized at 00z Jun 03 2026

Levi Cowan - tropicaltidbits.com

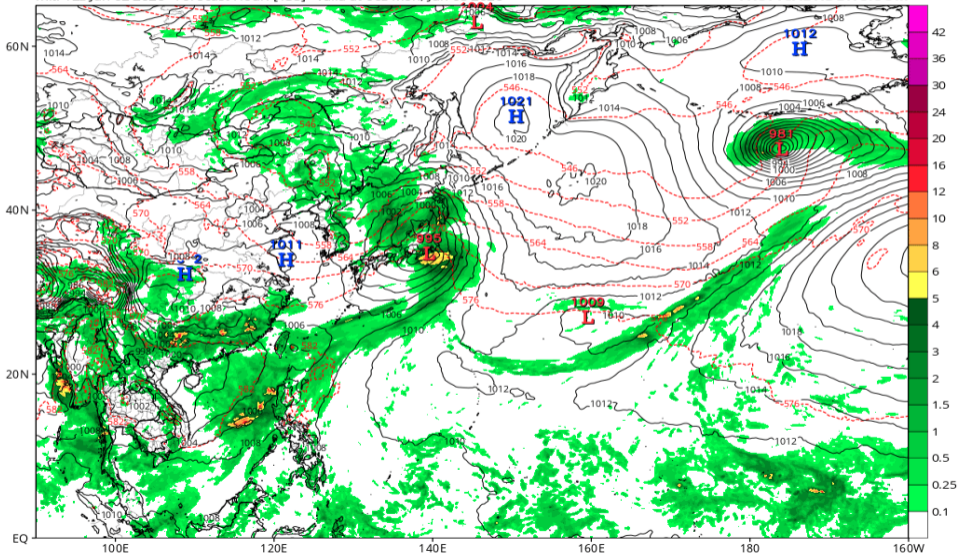


地上気圧配置 (GFS 06/03 00Z 予報)

GFS 6-hour Averaged Precip Rate (mm/hr), MSLP (hPa) & 1000-500mb Thickness (dam)

Init: 12z Jun 02 2026 Forecast Hour: [138] valid at 06z Mon, Jun 08 2026

TROPICALTIDBITS.COM



中層相对湿度 (GFS 06/03 00Z 予報)

GFS MSLP (mb), 700-300 hPa Relative Humidity (%), and 700-300 hPa Wind (kt)

Init: 12z Jun 02 2026 Forecast Hour: [132] valid at 00z Mon, Jun 08 2026

TROPICALTIDBITS.COM

