

Results of dcpam are compared with MGS<sup>1</sup>-TES<sup>2</sup> and MRO<sup>3</sup>-MCS<sup>4</sup> data. MGS-TES and MRO-MCS data used for comparison are those in MY26<sup>5</sup> and MY30. Those observational data are downloaded from the PDS<sup>6</sup>.

---

<sup>1</sup>Mars Global Surveyor  
<sup>2</sup>Thermal Emission Spectrometer  
<sup>3</sup>Mars Reconnaissance Orbiter  
<sup>4</sup>Mars Climate Sounder  
<sup>5</sup>MY stands for Mars Year  
<sup>6</sup>Planetary Data System

dust optical depth at 0.67 micron meter at the surface  
(degree\_north)

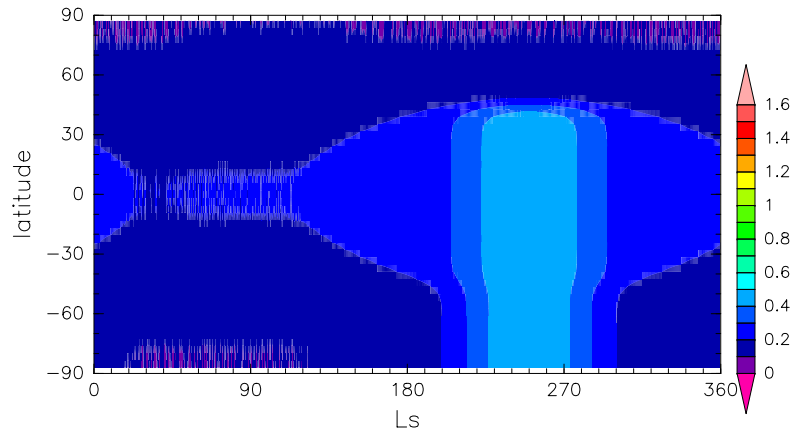


Figure 1: Daily mean dust optical depth prescribed in dcpam

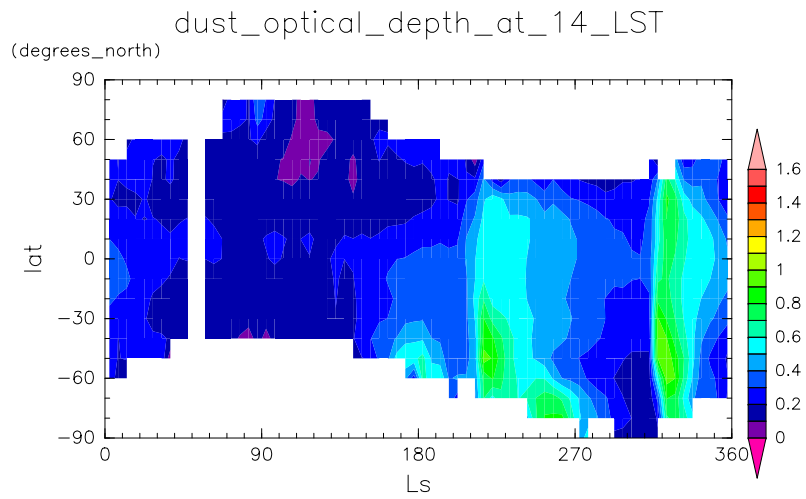


Figure 2: Double of dust optical depth observed by MGS-TES in MY26

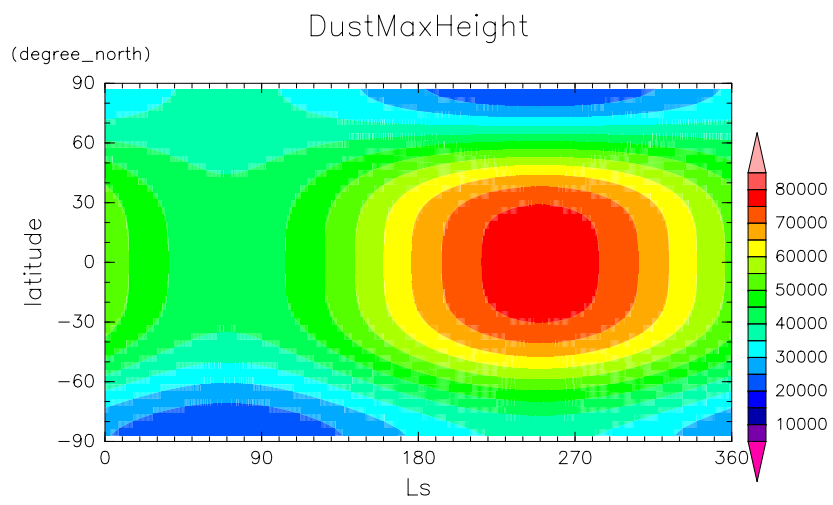


Figure 3: Daily mean maximum height of dust distribution prescribed in decpam

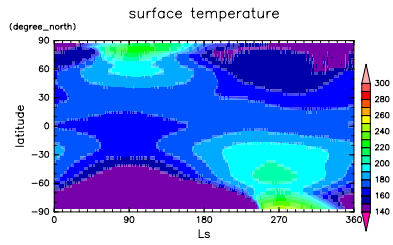


Figure 4:  $T_s$  at 02 LST by dcpam

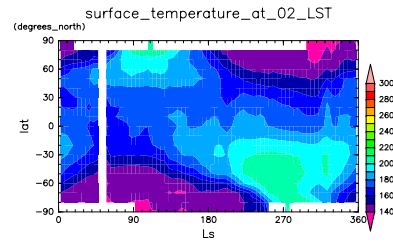


Figure 6:  $T_s$  at 02 LST by MGS

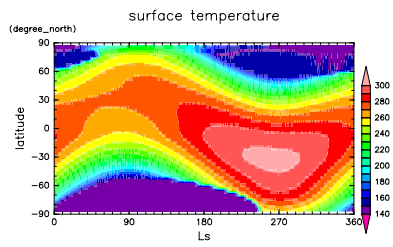


Figure 5:  $T_s$  at 14 LST by dcpam

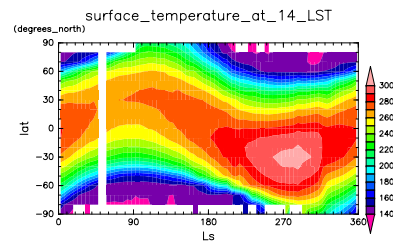


Figure 7:  $T_s$  at 14 LST by MGS

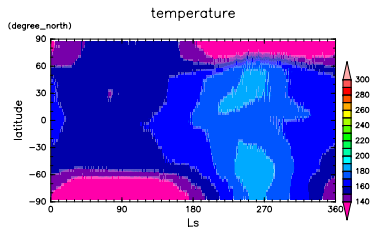


Figure 8: T at 18 Pa and at 02 LST by dcpan

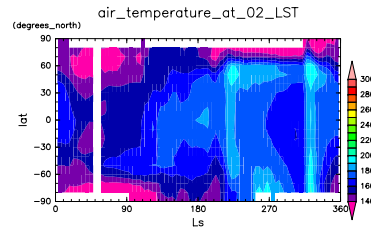


Figure 12: T at 18 Pa and at 02 LST by MGS

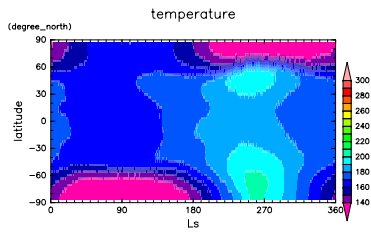


Figure 9: T at 50 Pa and at 02 LST by dcpan

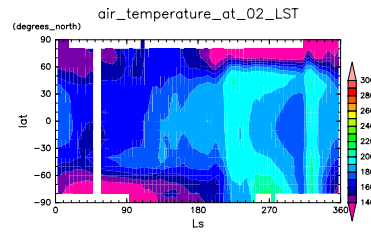


Figure 13: T at 50 Pa and at 02 LST by MGS

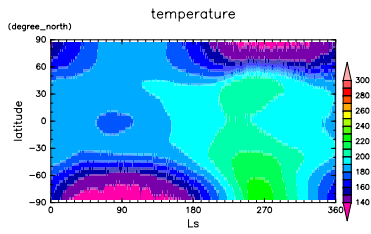


Figure 10: T at 136 Pa and at 02 LST by dcpan

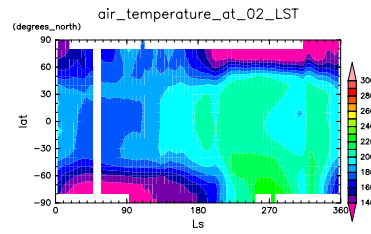


Figure 14: T at 136 Pa and at 02 LST by MGS

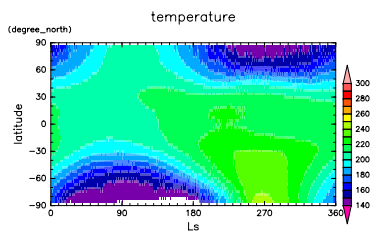


Figure 11: T at 370 Pa and at 02 LST by dcpan

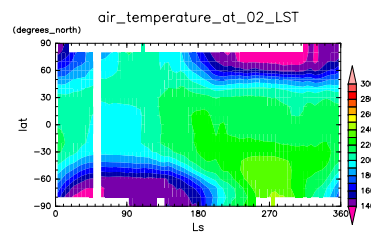


Figure 15: T at 370 Pa and at 02 LST by MGS

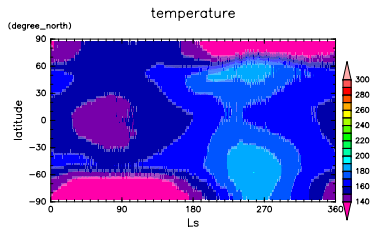


Figure 16: T at 18 Pa and at 14 LST by dcpam

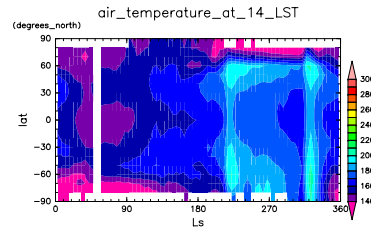


Figure 20: T at 18 Pa and at 14 LST by MGS

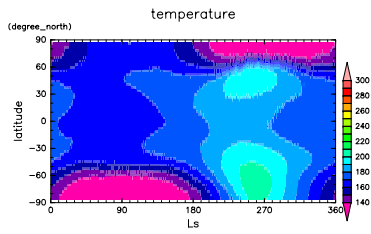


Figure 17: T at 50 Pa and at 14 LST by dcpam

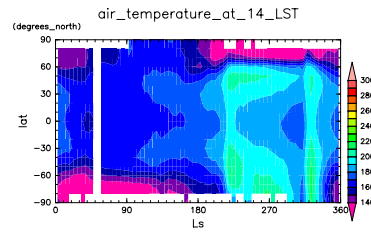


Figure 21: T at 50 Pa and at 14 LST by MGS

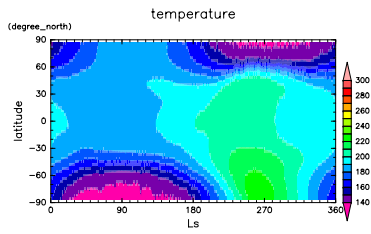


Figure 18: T at 136 Pa and at 14 LST by dcpam

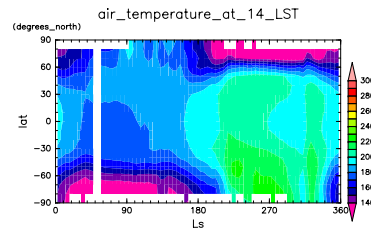


Figure 22: T at 136 Pa and at 14 LST by MGS

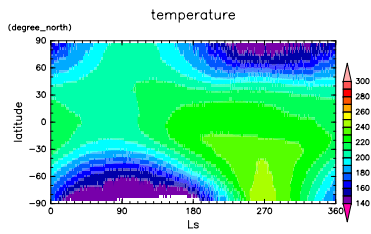


Figure 19: T at 370 Pa and at 14 LST by dcpam

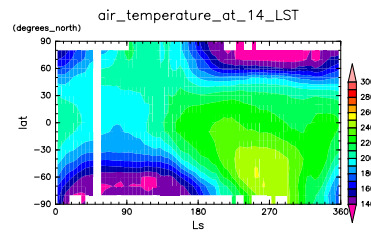


Figure 23: T at 370 Pa and at 14 LST by MGS

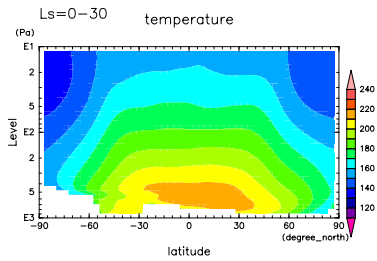


Figure 24: Temp at 02 LST and Ls=0-30 deg by dcpam

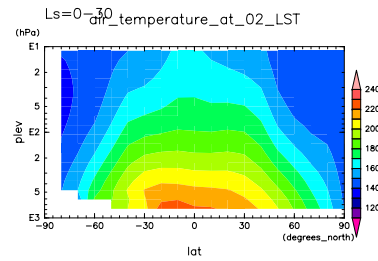


Figure 27: Temp at 02 LST and Ls=0-30 deg by MGS

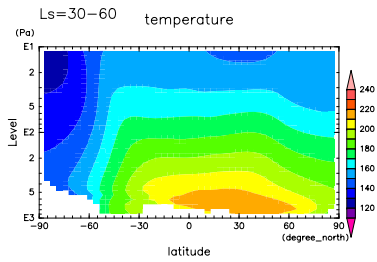


Figure 25: Temp at 02 LST and Ls=30-60 deg by dcpam

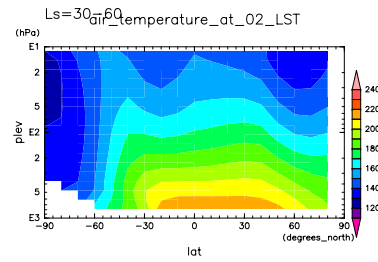


Figure 28: Temp at 02 LST and Ls=30-60 deg by MGS

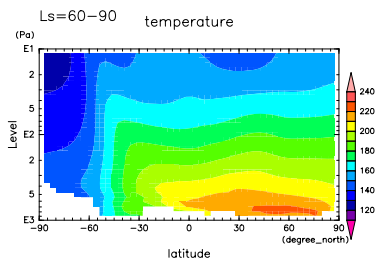


Figure 26: Temp at 02 LST and Ls=60-90 deg by dcpam

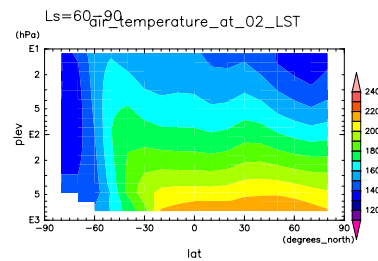


Figure 29: Temp at 02 LST and Ls=60-90 deg by MGS

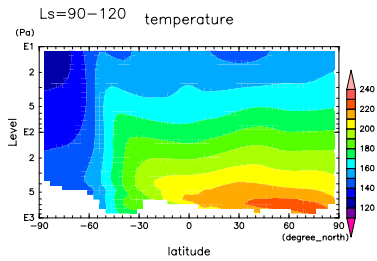


Figure 30: Temp at 02 LST and Ls=90-120 deg by dcpam

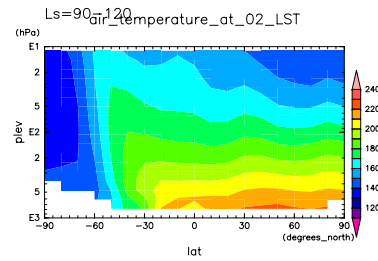


Figure 33: Temp at 02 LST and Ls=90-120 deg by MGS

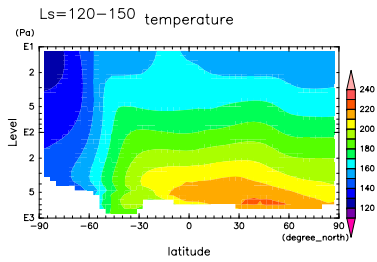


Figure 31: Temp at 02 LST and Ls=120-150 deg by dcpam

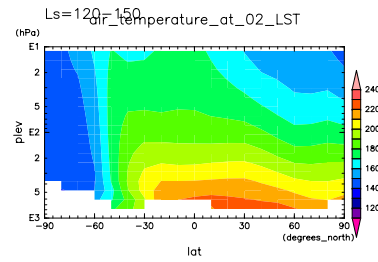


Figure 34: Temp at 02 LST and Ls=120-150 deg by MGS

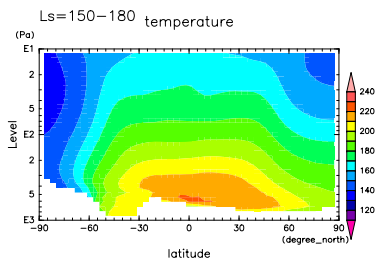


Figure 32: Temp at 02 LST and Ls=150-180 deg by dcpam

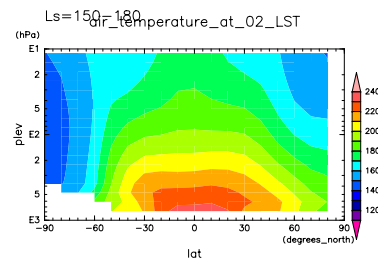


Figure 35: Temp at 02 LST and Ls=150-180 deg by MGS



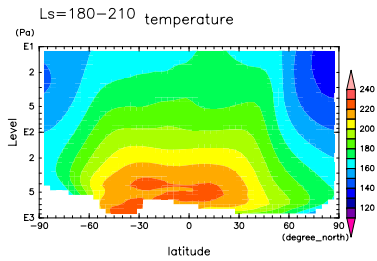


Figure 36: Temp at 02 LST and Ls=180-210 deg by dc pam

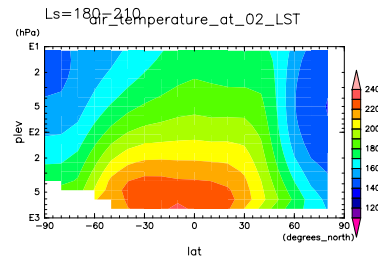


Figure 39: Temp at 02 LST and Ls=180-210 deg by MGS

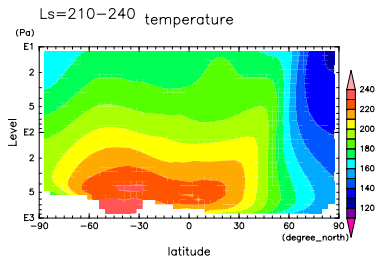


Figure 37: Temp at 02 LST and Ls=210-240 deg by dc pam

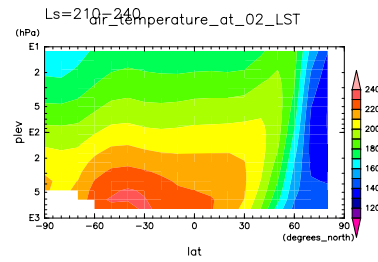


Figure 40: Temp at 02 LST and Ls=210-240 deg by MGS

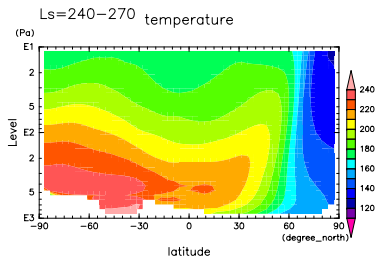


Figure 38: Temp at 02 LST and Ls=240-270 deg by dc pam

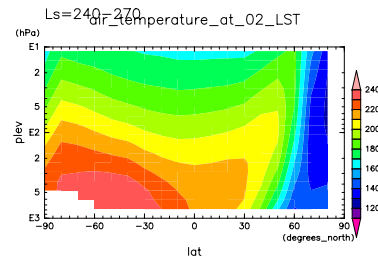


Figure 41: Temp at 02 LST and Ls=240-270 deg by MGS

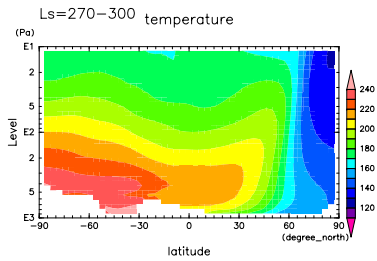


Figure 42: Temp at 02 LST and Ls=270-300 deg by dc pam

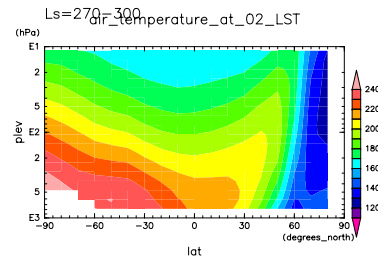


Figure 45: Temp at 02 LST and Ls=270-300 deg by MGS

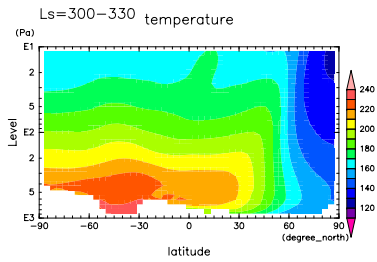


Figure 43: Temp at 02 LST and Ls=300-330 deg by dc pam

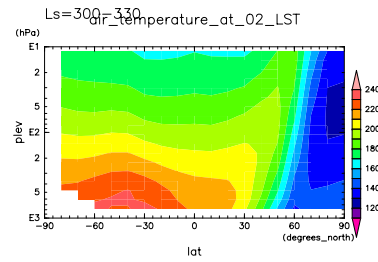


Figure 46: Temp at 02 LST and Ls=300-330 deg by MGS

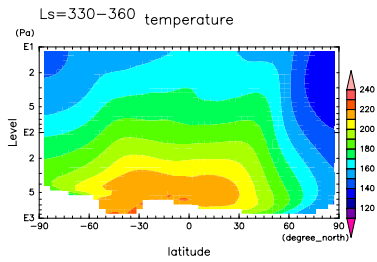


Figure 44: Temp at 02 LST and Ls=330-360 deg by dc pam

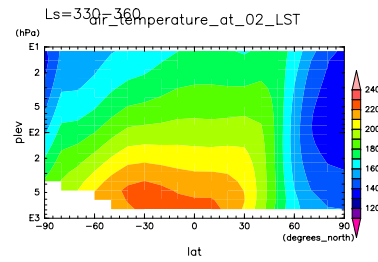


Figure 47: Temp at 02 LST and Ls=330-360 deg by MGS

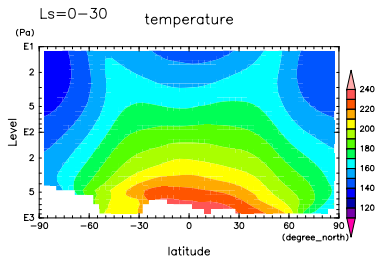


Figure 48: Temp at 14 LST and Ls=0-30 deg by dcpam

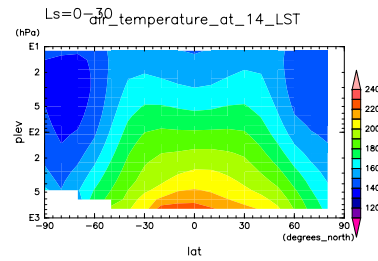


Figure 51: Temp at 14 LST and Ls=0-30 deg by MGS

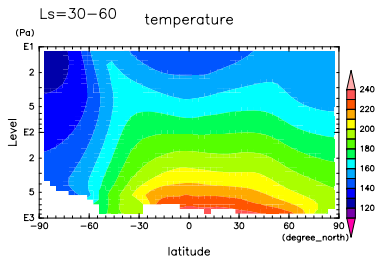


Figure 49: Temp at 14 LST and Ls=30-60 deg by dcpam

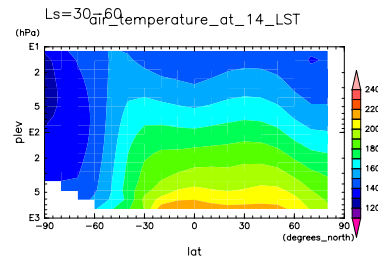


Figure 52: Temp at 14 LST and Ls=30-60 deg by MGS

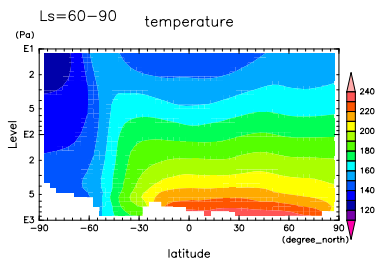


Figure 50: Temp at 14 LST and Ls=60-90 deg by dcpam

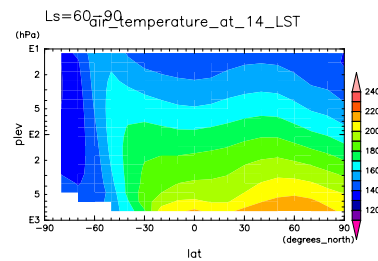


Figure 53: Temp at 14 LST and Ls=60-90 deg by MGS

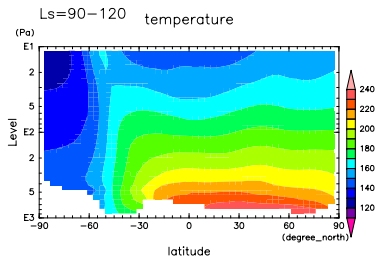


Figure 54: Temp at 14 LST and Ls=90-120 deg by dcpan

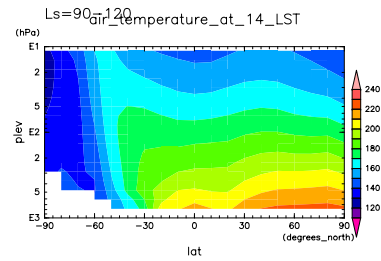


Figure 57: Temp at 14 LST and Ls=90-120 deg by MGS

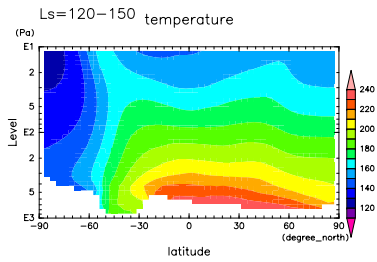


Figure 55: Temp at 14 LST and Ls=120-150 deg by dcpan

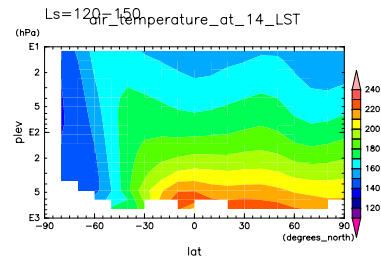


Figure 58: Temp at 14 LST and Ls=120-150 deg by MGS

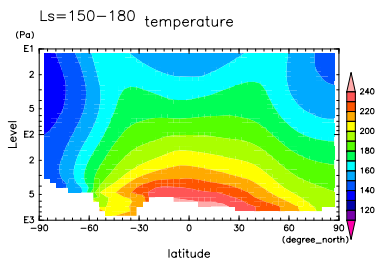


Figure 56: Temp at 14 LST and Ls=150-180 deg by dcpan

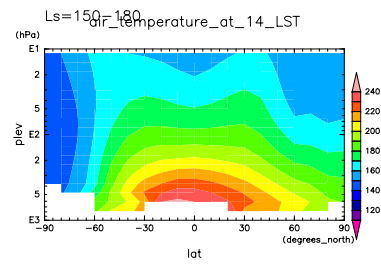


Figure 59: Temp at 14 LST and Ls=150-180 deg by MGS

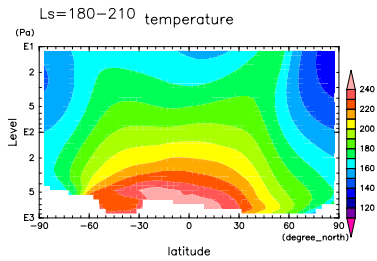


Figure 60: Temp at 14 LST and Ls=180-210 deg by dc pam

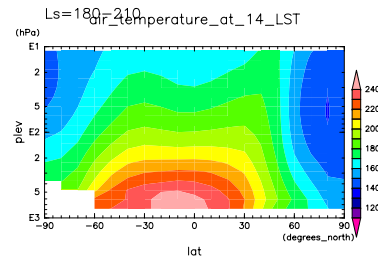


Figure 63: Temp at 14 LST and Ls=180-210 deg by MGS

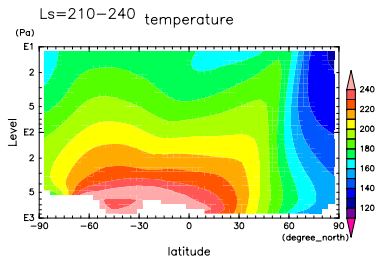


Figure 61: Temp at 14 LST and Ls=210-240 deg by dc pam

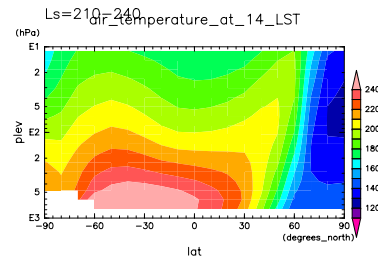


Figure 64: Temp at 14 LST and Ls=210-240 deg by MGS

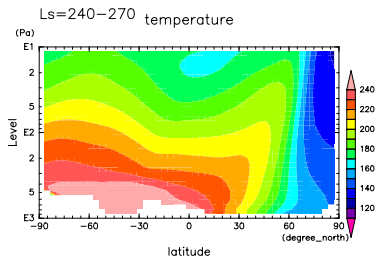


Figure 62: Temp at 14 LST and Ls=240-270 deg by dc pam

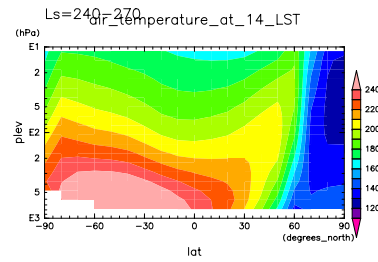


Figure 65: Temp at 14 LST and Ls=240-270 deg by MGS

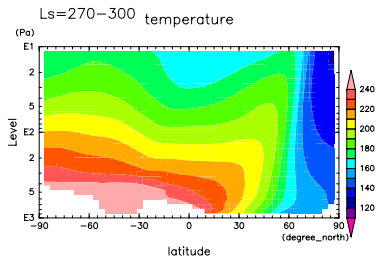


Figure 66: Temp at 14 LST and Ls=270-300 deg by dc pam

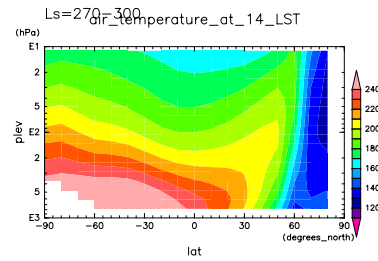


Figure 69: Temp at 14 LST and Ls=270-300 deg by MGS

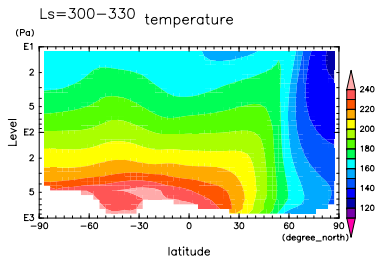


Figure 67: Temp at 14 LST and Ls=300-330 deg by dc pam

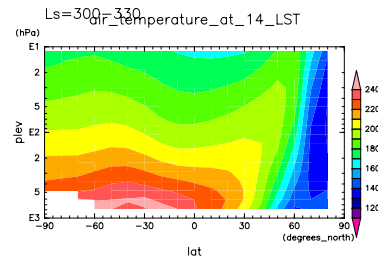


Figure 70: Temp at 14 LST and Ls=300-330 deg by MGS

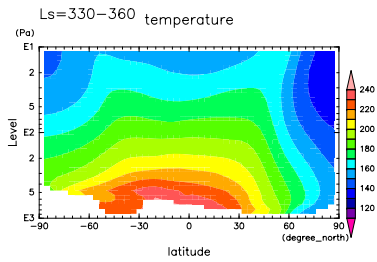


Figure 68: Temp at 14 LST and Ls=330-360 deg by dc pam

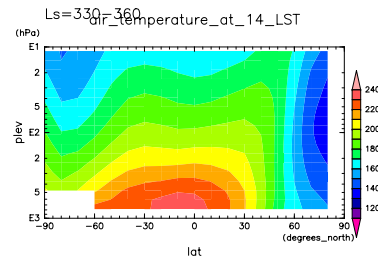


Figure 71: Temp at 14 LST and Ls=330-360 deg by MGS

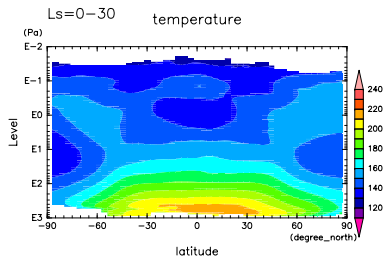


Figure 72: Temp at 03 LST and Ls=0-30 deg by dcpam

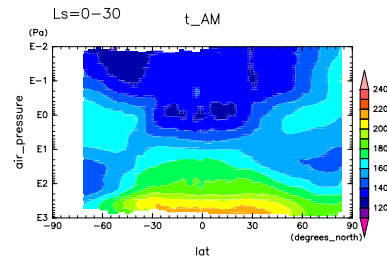


Figure 75: Temp at 03 LST and Ls=0-30 deg by MRO

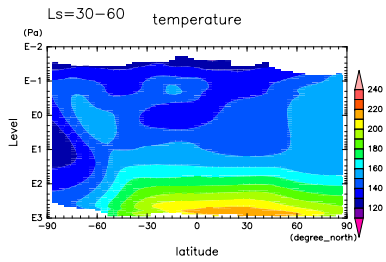


Figure 73: Temp at 03 LST and Ls=30-60 deg by dcpam

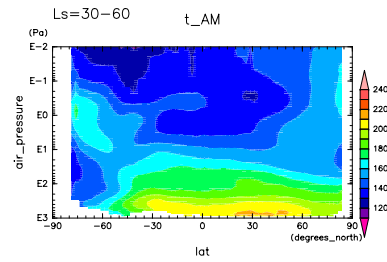


Figure 76: Temp at 03 LST and Ls=30-60 deg by MRO

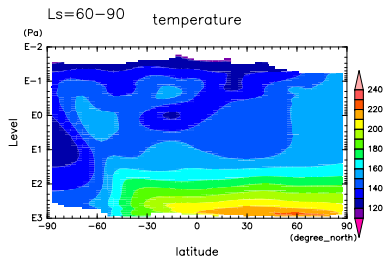


Figure 74: Temp at 03 LST and Ls=60-90 deg by dcpam

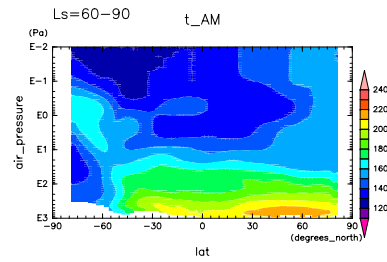


Figure 77: Temp at 03 LST and Ls=60-90 deg by MRO

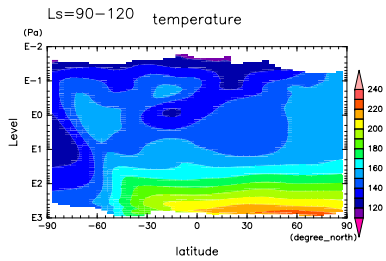


Figure 78: Temp at 03 LST and Ls=90-120 deg by dcpan

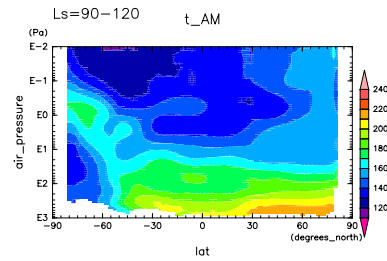


Figure 81: Temp at 03 LST and Ls=90-120 deg by MRO

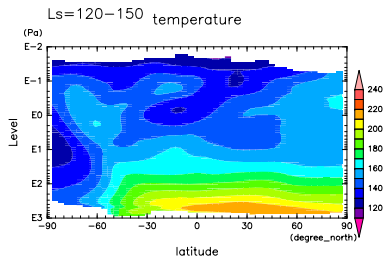


Figure 79: Temp at 03 LST and Ls=120-150 deg by dcpan

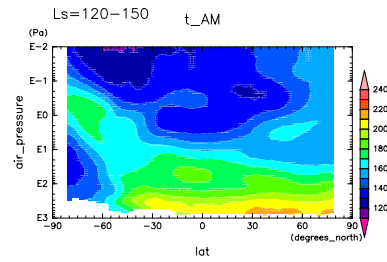


Figure 82: Temp at 03 LST and Ls=120-150 deg by MRO

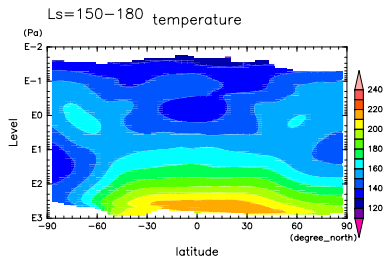


Figure 80: Temp at 03 LST and Ls=150-180 deg by dcpan

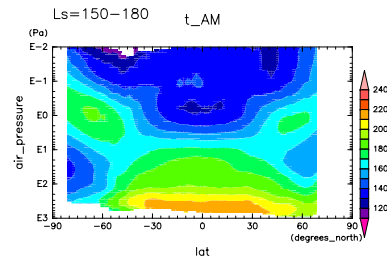


Figure 83: Temp at 03 LST and Ls=150-180 deg by MRO



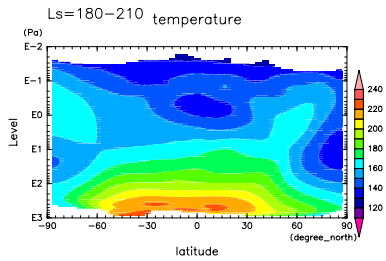


Figure 84: Temp at 03 LST and Ls=180-210 deg by dpam

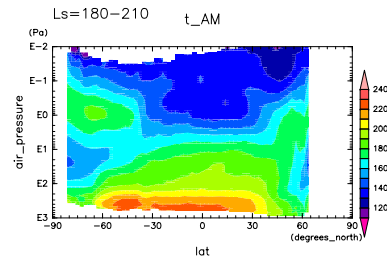


Figure 87: Temp at 03 LST and Ls=180-210 deg by MRO

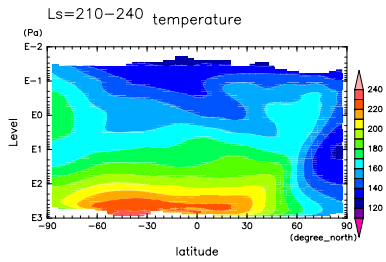


Figure 85: Temp at 03 LST and Ls=210-240 deg by dpam

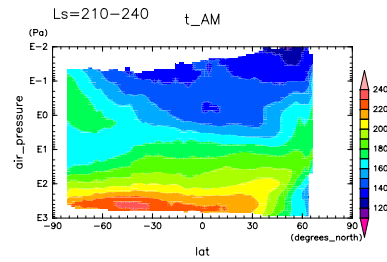


Figure 88: Temp at 03 LST and Ls=210-240 deg by MRO

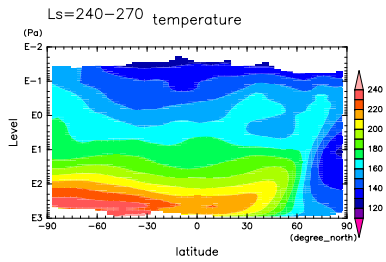


Figure 86: Temp at 03 LST and Ls=240-270 deg by dpam

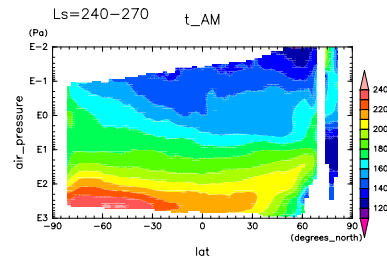


Figure 89: Temp at 03 LST and Ls=240-270 deg by MRO

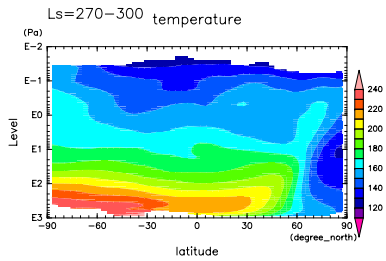


Figure 90: Temp at 03 LST and Ls=270-300 deg by dpam

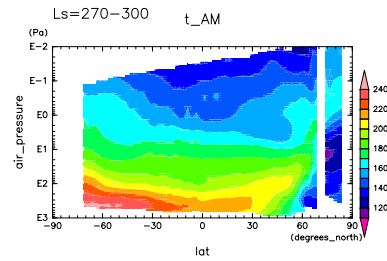


Figure 93: Temp at 03 LST and Ls=270-300 deg by MRO

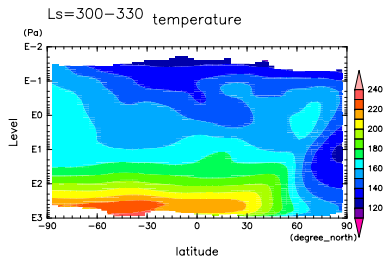


Figure 91: Temp at 03 LST and Ls=300-330 deg by dpam

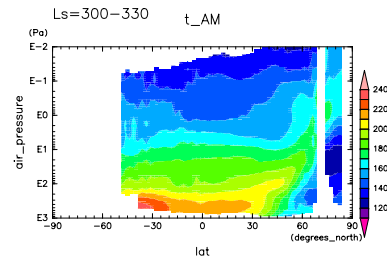


Figure 94: Temp at 03 LST and Ls=300-330 deg by MRO

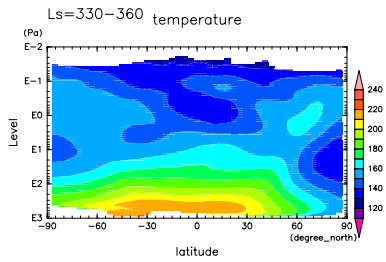


Figure 92: Temp at 03 LST and Ls=330-360 deg by dpam

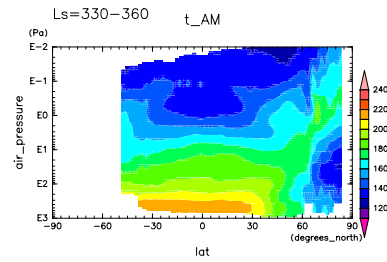


Figure 95: Temp at 03 LST and Ls=330-360 deg by MRO

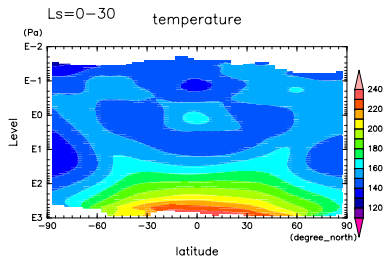


Figure 96: Temp at 15 LST and Ls=0-30 deg by dcpam

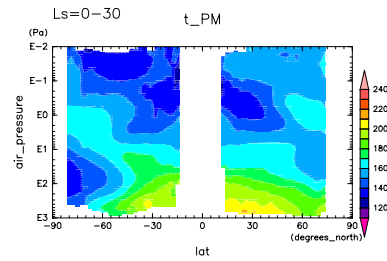


Figure 99: Temp at 15 LST and Ls=0-30 deg by MRO

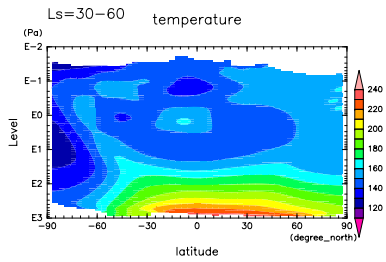


Figure 97: Temp at 15 LST and Ls=30-60 deg by dcpam

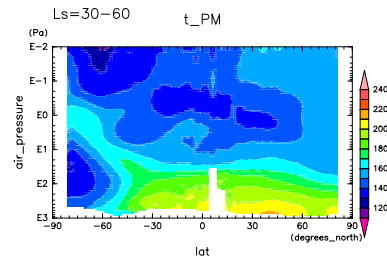


Figure 100: Temp at 15 LST and Ls=30-60 deg by MRO

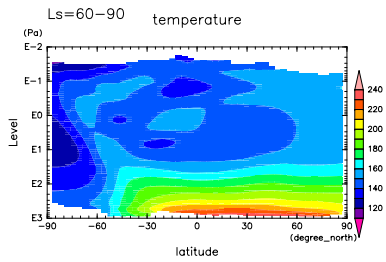


Figure 98: Temp at 15 LST and Ls=60-90 deg by dcpam

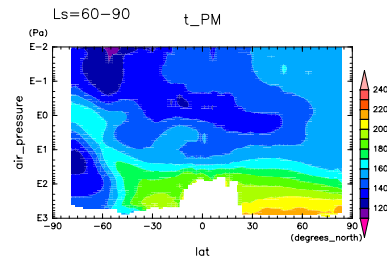


Figure 101: Temp at 15 LST and Ls=60-90 deg by MRO

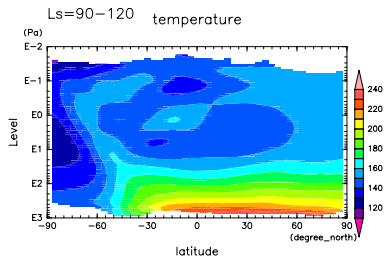


Figure 102: Temp at 15 LST and Ls=90-120 deg by dcpan

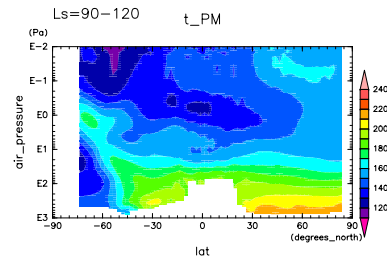


Figure 105: Temp at 15 LST and Ls=90-120 deg by MRO

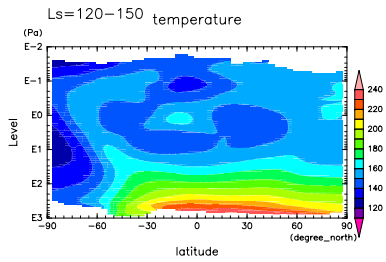


Figure 103: Temp at 15 LST and Ls=120-150 deg by dcpan

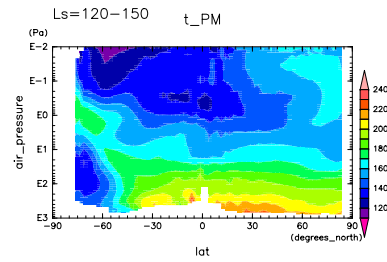


Figure 106: Temp at 15 LST and Ls=120-150 deg by MRO

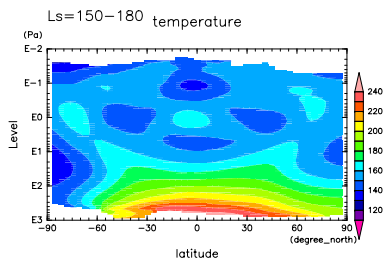


Figure 104: Temp at 15 LST and Ls=150-180 deg by dcpan

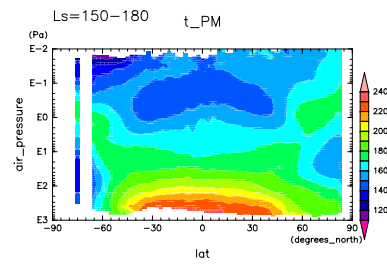


Figure 107: Temp at 15 LST and Ls=150-180 deg by MRO

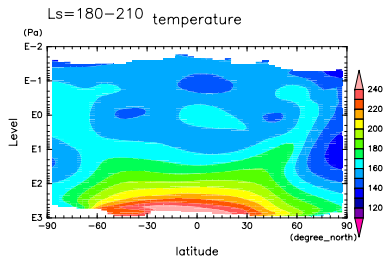


Figure 108: Temp at 15 LST and Ls=180-210 deg by dpam

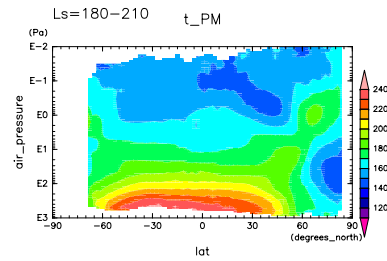


Figure 111: Temp at 15 LST and Ls=180-210 deg by MRO

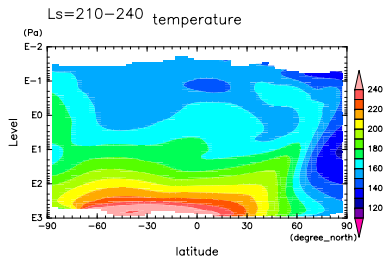


Figure 109: Temp at 15 LST and Ls=210-240 deg by dpam

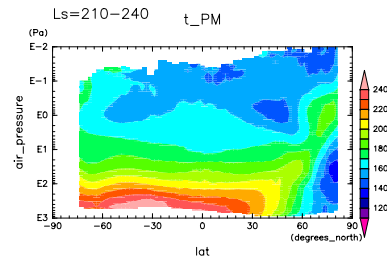


Figure 112: Temp at 15 LST and Ls=210-240 deg by MRO

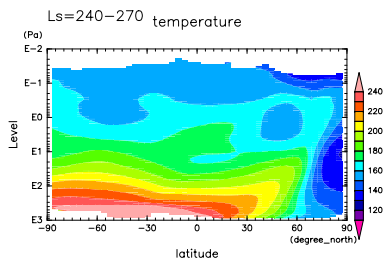


Figure 110: Temp at 15 LST and Ls=240-270 deg by dpam

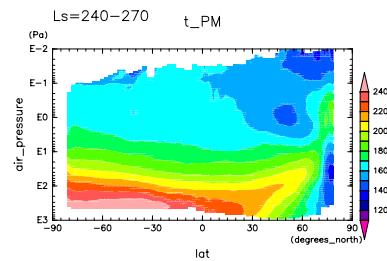


Figure 113: Temp at 15 LST and Ls=240-270 deg by MRO

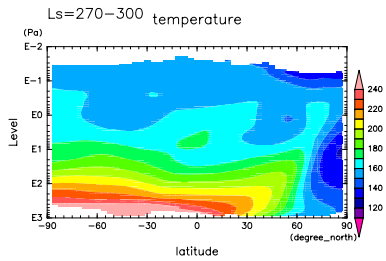


Figure 114: Temp at 15 LST and Ls=270-300 deg by dpam

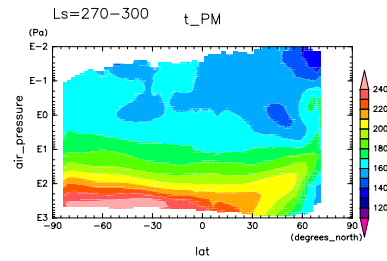


Figure 117: Temp at 15 LST and Ls=270-300 deg by MRO

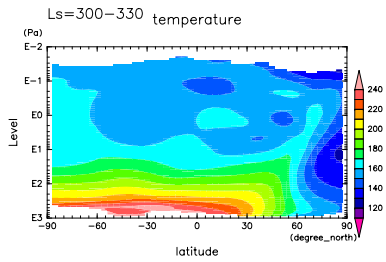


Figure 115: Temp at 15 LST and Ls=300-330 deg by dpam

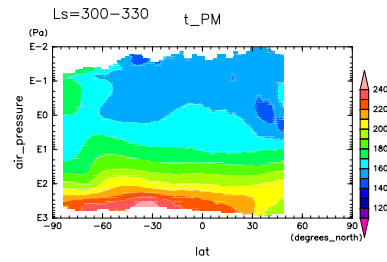


Figure 118: Temp at 15 LST and Ls=300-330 deg by MRO

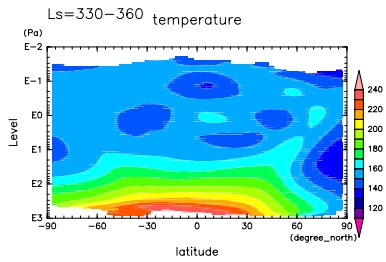


Figure 116: Temp at 15 LST and Ls=330-360 deg by dpam

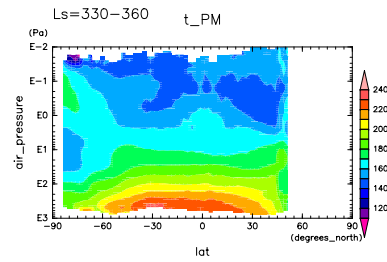


Figure 119: Temp at 15 LST and Ls=330-360 deg by MRO